

GMH-12 PORTABLE GAS ENGINE DRIVEN HYDRAULIC OPERATOR

- Completely Portable
- 5, 7 or 10 Horsepower Option
- 4 Cycle Air Cooled Engine
- Adaptors to Fit Most Manufacturers Valves or Gates
- Torques to 55 ft.-lbs.
- Can Be Rolled, or Carried with Handles to almost any Location
- Available with Optional Electric Start

The Waterman GMH-12 is specially designed as a "Universal" type valve and gate actuator. Adaptors are available which enable almost any type gate or valve to be operated with ease. Speeds opening and closing - makes valve exercising a breeze! Easily transported, this high torque, self-contained actuator is both powerful and light weight. Quick coupled for ease of use.

SPECIFICATIONS:

ENGINE:

5 Horsepower nominal rating
Bore x Stroke: 2.56 in. x 2.44 in.
4 cycle, air cooled
Operating RPM: 3000 normal/3350 max.
Fuel capacity: 1½ pints (see owner's manual for req'd grade)

HYDRAULIC SYSTEM:

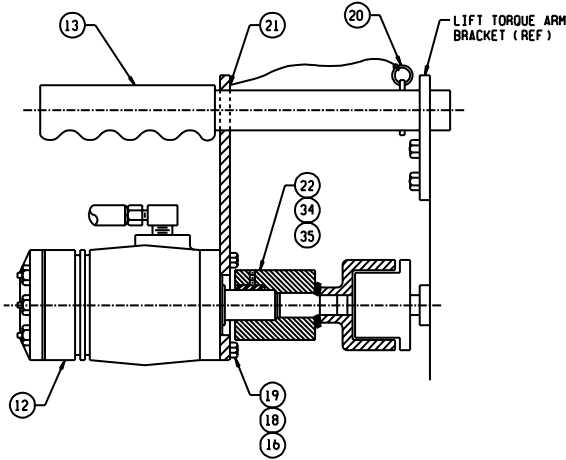
Reservoir Volume: 5½ gallons
Full Level: 4½ gallons
Directional control: reversible; center neutral; detented
Output RPM: 160 normal/200 max.
Total weight: (wet): 165 lbs.
Recommended hydraulic oil: Shell Tellus iso 32 or equal.
Replacement hydraulic filter element: UCC #UC-R-6111 or equal.



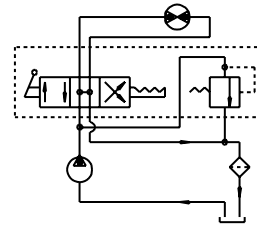
GMH-12

GMH-12 PORTABLE HYDRAULIC MOTOR OPERATOR

No.	Part	No.	Part
1	Frame/Tank Assy.	22	Coupling
2	Engine-Gasoline	23	Hydraulic Filter Body & Element
3	Gear Pump	24	Micronic Filter Breather Assy.
4	Pump Flange Adapter	25	Sight Level Gauge
5	Motor Pump Coupling	26	Waterman Serial No. Plate
6	Motor Mount	27	Wheel
7	Directional Valve	28	Rubber Foot
8	Socket HD Cap Screw	29	Handgrip
9	Lock Washer	30	Hook
10	Washer- Flat	31	Roll Pin
11	Bolt- Hex Hd.	32	Nut- Hex
12	Hydraulic Motor	33	Lockwasher
13	Torque Arm Assy.	34	Set Screw
14	Bolt- Hex Hd.	35	Woodruff Key
15	Axle	36	Suction Hose
16	Washer- Flat	37	Discharge Hose
17	Bolt- Hex Hd.	38	Return Hose
18	Lockwasher	39	Hyd. Motor Hose
19	Bolt- Hex Hd.	40	Oil Guard
20	Quick Release Pin w/cable	41	Spark Arrestor
21	Cable Retaining Screw	42	Muffler Guard



ENCLOSED HYDRAULIC GEARBOX ASSEMBLY
(SHOWN MOUNTED TO OPERATOR)



HYDRAULIC SCHEMATIC

