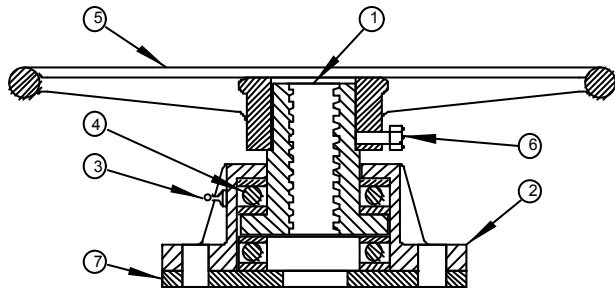


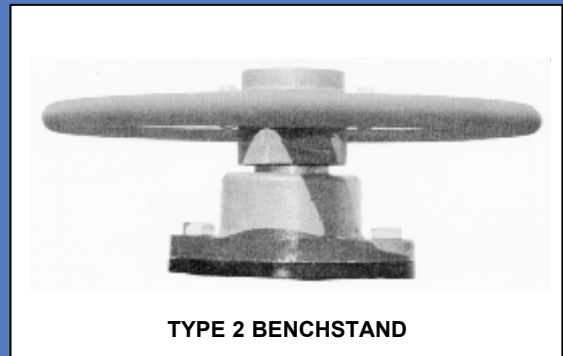
TYPE 2 HANDWHEEL OPERATOR



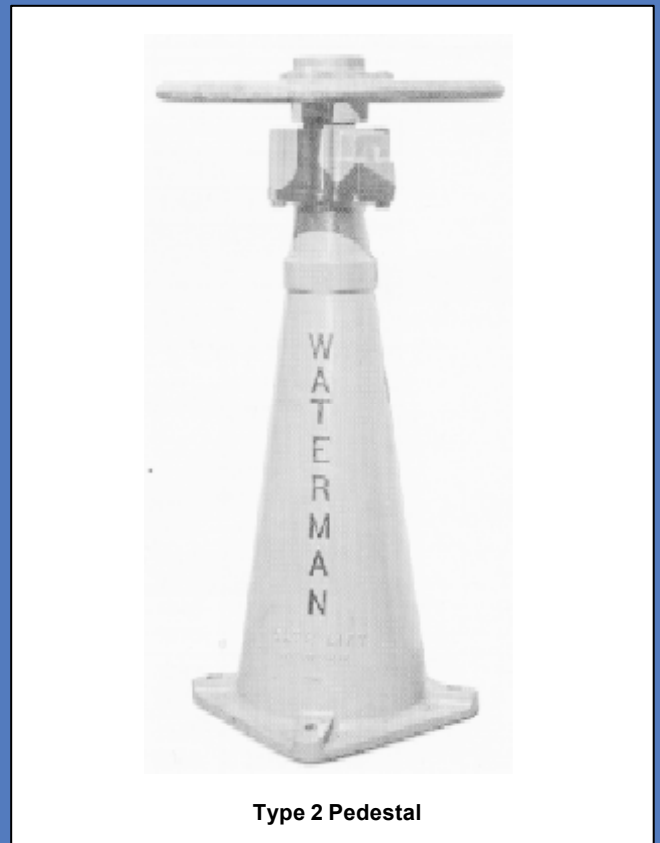
PARTS LIST	
No.	Name
1	Lift Nut
2	Lift Housing
3	Grease Fitting
4	Ball Bearing
5	Handwheel
6	Set Screw
7	Base Plate

TYPICAL SPECIFICATION

Handwheel Operators shall have a cast bronze lift nut machined to accurately mate with the operating stem. ball bearings shall be provided above and below the flange on the lift nut to take the thrust developed while opening and closing the gate. Bearings shall be housed in an enclosed weatherproof housing and shall be furnished with lubrication fittings. Each unit shall be fitted with a handwheel marked with direction of opening. Handwheels shall be of such diameter that handwheel pull shall not exceed 40 lb. on the rim. Handwheels shall be removable and shall be cast iron or fabricated steel. Protective stem covers may be mounted when required by the specifications.

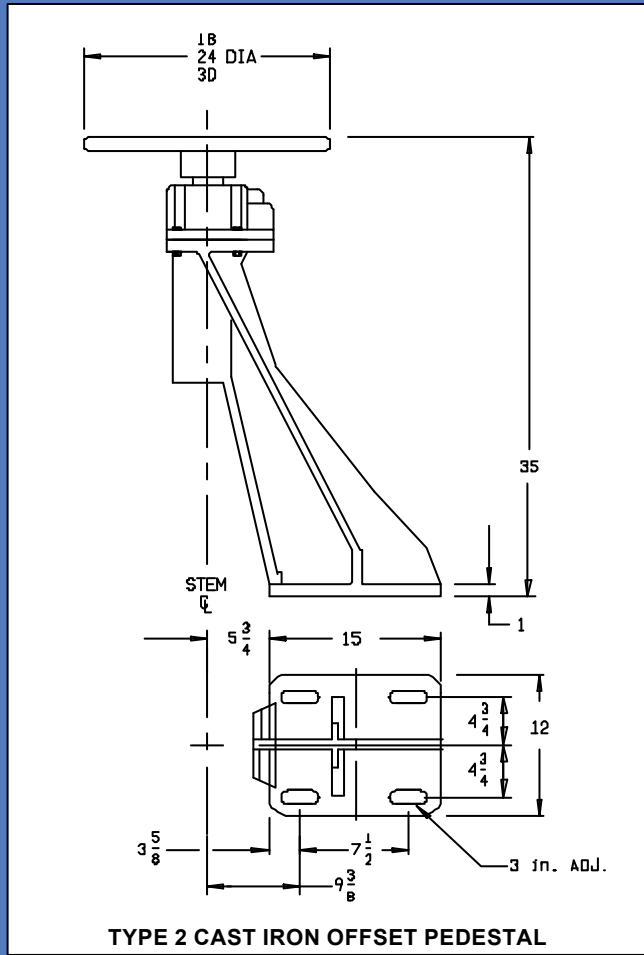
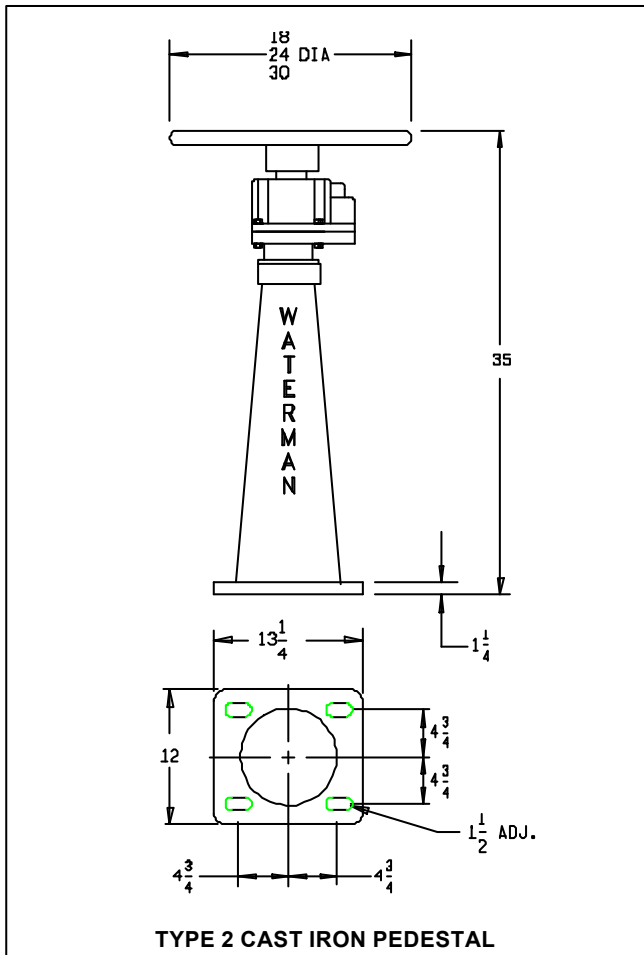


TYPE 2 BENCHSTAND



Type 2 Pedestal

TYPE 2 HANDWHEEL OPERATOR



HANDWHEEL LIFT CAPACITIES						
LIFT	PULL (lbs.)	TORQUE (ft.-lbs.)	1 1/8	1 1/4	1 1/2	2
2-18	25	18.7	1550	1340	1420	1220
	40	30	2780	2550	2510	2150
2-24	25	25	2300	2180	1950	1500
	40	40	3800	3490	3130	2400
2-30	25	31.2	2970	2960	2450	1900
	40	50	4750	4730	3925	3025