

AGRICULTURE IRRIGATION WATER CONTROL PRODUCTS

PRICE LIST EFFECTIVE APRIL 1, 2024
SUPERSEDES ALL PREVIOUS PRICE LISTS
mcwanepi.com



TABLE OF CONTENTS

CANAL AND SLIDE GATES

- 3** Canal Gate Ordering Information
- 4** C-10 Canal Gates
- 10** Options
- 13** Parts
- 16** C-20 Canal Gates
- 23** Options
- 25** Parts
- 27** FC-10 Combination Canal/Drainage Gates
- 28** SSC-10 Stainless Steel Canal Gates
- 29** AC-31 Aluminum Canal Gates
- 30** P-30 Pressure Gates

LINE GATES + VALVES

- 32** H-30 and HV-30 Line Gate
- 35** WBV Butterfly Valve

DRAINAGE FLAP GATES

- 36** F-10 Cast Iron Flap Gate
- 38** SSF-43 Rectangular Flap Gate
- 38** AF-41 Aluminum Flap Gate
- 38** SSF-41 Stainless Steel Flap Gate
- 40** PF-25 Cast Iron Flap Gate

RISER VALVES

- 41** Overflow - Red Top
- 44** Pasture Overflow Valves
- 46** Overflow- Sunshine
- 49** Alfalfa
- 56** Universal Hydrants

AIR RELIEF VALVES

- 59** AV-150 Aluminum
- 60** CR-101 Continuous Acting
- 60** CR-101-HP High Pressure Continuous Acting
- 60** AVP-1 Plastic
- 61** CRP-8 Plastic

PRESSURE RELIEF VALVES

- 62** AA-6
- 62** AA-96
- 64** AA-9

ORDERING GUIDES

- 65** C-10 Order Form
- 66** C-20 Order Form
- 67** AC-31 Order Form

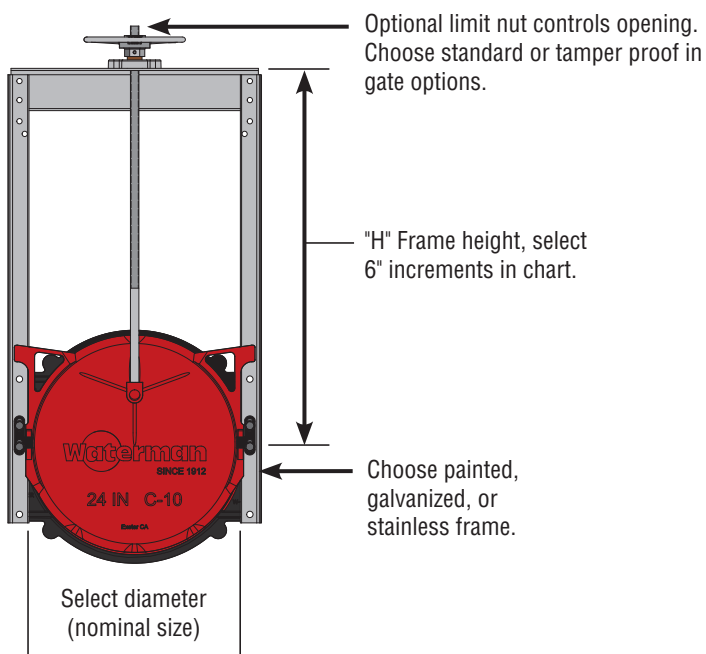
For replacement parts for items not listed, contact factory for assistance.

All Orders Subject to McWane Plant & Industrial Terms of Sale www.mcwanepi.com

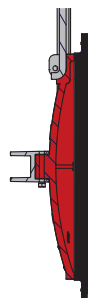
Prices subject to change without notice. Current pricing always available on website. Not responsible for clerical or typographical errors in published prices. Possession of price list does not constitute offer to sell.

Photos shown for reference only and may not represent finished product size or configuration.

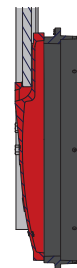
CANAL GATE ORDERING



MOUNTING OPTIONS



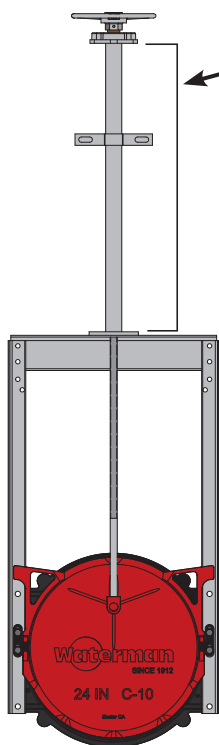
Flat back for mounting to concrete wall.



Spigot back to fit corrugated metal pipe.

Pipe adapters to fit IPS, PVC, PIP, corrugated HDPE or concrete pipe.

CANAL GATE SPECIALTY OPTIONS



RISING STEM EXTENSION

Allows handwheel to be higher than overall frame.

Order in 1-foot increments.

In situations where the frame must be entirely below a structure or walkway, gate can be operated by coring hole in structure and bringing stem extension through. In these instances, the handwheel can be positioned at your specified height above the structure, or optionally a 2" operating nut can be concealed in a flush-mounted box with cover lid. Consult factory for options and pricing for your application. Also reduce expense in oversized frame gates by reducing the size of the frame to just what is needed to open the gate fully.

NON-RISING STEM (not pictured)

Commonly used in areas with minimal overhead clearance, prevents gate stem from extending above the handwheel/op nut when in open position.

Available with CL-10 cover only.

C-10 RED TOP CANAL GATES

C-10 CANAL GATES



Model C-10

C-10

Waterman C-10 canal gates are built-to-last, offering a typical field life exceeding 40 years. They offer superior construction and performance to “look alike” products across a wide range of applications. They are designed for installations with pressure in the seating direction.

Waterman advantages include:

- Superior sealing with 2-bolt wedges standard (competitors use only one bolt).
- Thicker, heavier material for rails, assures reliable performance and prevents deflection.
- Compatibility with existing installations.
- Wide choice of mounting options and pipe adapters.

GATE SIZE (DIAMETER)	“H” FRAME HEIGHT	FRAME MATERIAL	FLAT BACK		SPIGOT BACK (For CMP)		WEIGHT (LBS.)
6"	24"	GALVANIZED	812.00	C10F-6-24H-GALV	854.00	C10S-6-24H-GALV	41
	30"	GALVANIZED	843.00	C10F-6-30H-GALV	885.00	C10S-6-30H-GALV	46
	36"	GALVANIZED	872.00	C10F-6-36H-GALV	915.00	C10S-6-36H-GALV	51
	42"	GALVANIZED	902.00	C10F-6-42H-GALV	944.00	C10S-6-42H-GALV	56
	48"	GALVANIZED	933.00	C10F-6-48H-GALV	975.00	C10S-6-48H-GALV	61
	54"	GALVANIZED	963.00	C10F-6-54H-GALV	1005.00	C10S-6-54H-GALV	66
	60"	GALVANIZED	993.00	C10F-6-60H-GALV	1036.00	C10S-6-60H-GALV	71
	66"	GALVANIZED	1023.00	C10F-6-66H-GALV	1065.00	C10S-6-66H-GALV	76
	72"	GALVANIZED	1054.00	C10F-6-72H-GALV	1096.00	C10S-6-72H-GALV	81
	84"	GALVANIZED	1113.00	C10F-6-84H-GALV	1157.00	C10S-6-84H-GALV	91
	96"	GALVANIZED	1174.00	C10F-6-96H-GALV	1216.00	C10S-6-96H-GALV	100
	108"	GALVANIZED	1234.00	C10F-6-108H-GALV	1277.00	C10S-6-108H-GALV	109
120"	GALVANIZED	1295.00	C10F-6-120H-GALV	1337.00	C10S-6-120H-GALV	118	
8"	24"	GALVANIZED	803.00	C10F-8-24H-GALV	888.00	C10S-8-24H-GALV	50
	30"	GALVANIZED	829.00	C10F-8-30H-GALV	918.00	C10S-8-30H-GALV	52
	36"	GALVANIZED	855.00	C10F-8-36H-GALV	949.00	C10S-8-36H-GALV	57
	42"	GALVANIZED	881.00	C10F-8-42H-GALV	979.00	C10S-8-42H-GALV	62
	48"	GALVANIZED	908.00	C10F-8-48H-GALV	1008.00	C10S-8-48H-GALV	67
	54"	GALVANIZED	934.00	C10F-8-54H-GALV	1039.00	C10S-8-54H-GALV	72
	60"	GALVANIZED	960.00	C10F-8-60H-GALV	1069.00	C10S-8-60H-GALV	77
	66"	GALVANIZED	986.00	C10F-8-66H-GALV	1100.00	C10S-8-66H-GALV	82
	72"	GALVANIZED	1013.00	C10F-8-72H-GALV	1129.00	C10S-8-72H-GALV	87
	84"	GALVANIZED	1065.00	C10F-8-84H-GALV	1190.00	C10S-8-84H-GALV	96
	96"	GALVANIZED	1118.00	C10F-8-96H-GALV	1250.00	C10S-8-96H-GALV	105
	108"	GALVANIZED	1166.00	C10F-8-108H-GALV	1311.00	C10S-8-108H-GALV	114
120"	GALVANIZED	1223.00	C10F-8-120H-GALV	1371.00	C10S-8-120H-GALV	123	

Indicate stem thread when ordering, add suffix to part number:

Right Hand Thread, 3 Teeth per inch = -3TR

Right Hand Thread, 4 Teeth per inch = -4TR

Left Hand Thread, 4 Teeth per inch = -4TL

Additional options may be added, contact factory for assistance and quotation.

Frame also available in painted steel or stainless steel. Contact factory for quotation.

C-10 RED TOP CANAL GATES

C-10 CANAL GATES

GATE SIZE (DIAMETER)	"H" FRAME HEIGHT	FRAME MATERIAL	FLAT BACK		SPIGOT BACK (For CMP)		WEIGHT (LBS.)
10"	24"	GALVANIZED	890.00	C10F-10-24H-GALV	932.00	C10S-10-24H-GALV	55
	30"	GALVANIZED	916.00	C10F-10-30H-GALV	960.00	C10S-10-30H-GALV	60
	36"	GALVANIZED	942.00	C10F-10-36H-GALV	989.00	C10S-10-36H-GALV	65
	42"	GALVANIZED	969.00	C10F-10-42H-GALV	1017.00	C10S-10-42H-GALV	70
	48"	GALVANIZED	995.00	C10F-10-48H-GALV	1045.00	C10S-10-48H-GALV	75
	54"	GALVANIZED	1021.00	C10F-10-54H-GALV	1074.00	C10S-10-54H-GALV	80
	60"	GALVANIZED	1047.00	C10F-10-60H-GALV	1099.00	C10S-10-60H-GALV	85
	66"	GALVANIZED	1074.00	C10F-10-66H-GALV	1130.00	C10S-10-66H-GALV	90
	72"	GALVANIZED	1100.00	C10F-10-72H-GALV	1158.00	C10S-10-72H-GALV	95
	84"	GALVANIZED	1152.00	C10F-10-84H-GALV	1214.00	C10S-10-84H-GALV	104
	96"	GALVANIZED	1205.00	C10F-10-96H-GALV	1271.00	C10S-10-96H-GALV	113
	108"	GALVANIZED	1257.00	C10F-10-108H-GALV	1328.00	C10S-10-108H-GALV	122
120"	GALVANIZED	1310.00	C10F-10-120H-GALV	1383.00	C10S-10-120H-GALV	131	
12"	24"	GALVANIZED	980.00	C10F-12-24H-GALV	997.00	C10S-12-24H-GALV	65
	30"	GALVANIZED	1010.00	C10F-12-30H-GALV	1027.00	C10S-12-30H-GALV	70
	36"	GALVANIZED	1040.00	C10F-12-36H-GALV	1057.00	C10S-12-36H-GALV	75
	42"	GALVANIZED	1071.00	C10F-12-42H-GALV	1087.00	C10S-12-42H-GALV	80
	48"	GALVANIZED	1101.00	C10F-12-48H-GALV	1118.00	C10S-12-48H-GALV	85
	54"	GALVANIZED	1130.00	C10F-12-54H-GALV	1148.00	C10S-12-54H-GALV	90
	60"	GALVANIZED	1161.00	C10F-12-60H-GALV	1178.00	C10S-12-60H-GALV	95
	66"	GALVANIZED	1191.00	C10F-12-66H-GALV	1208.00	C10S-12-66H-GALV	100
	72"	GALVANIZED	1222.00	C10F-12-72H-GALV	1238.00	C10S-12-72H-GALV	105
	84"	GALVANIZED	1281.00	C10F-12-84H-GALV	1298.00	C10S-12-84H-GALV	114
	96"	GALVANIZED	1342.00	C10F-12-96H-GALV	1359.00	C10S-12-96H-GALV	123
	108"	GALVANIZED	1271.00	C10F-12-108H-GALV	1419.00	C10S-12-108H-GALV	132
120"	GALVANIZED	1323.00	C10F-12-120H-GALV	1480.00	C10S-12-120H-GALV	141	
14"	30"	GALVANIZED	1066.00	C10F-14-30H-GALV	1081.00	C10S-14-30H-GALV	72
	36"	GALVANIZED	1097.00	C10F-14-36H-GALV	1111.00	C10S-14-36H-GALV	77
	42"	GALVANIZED	1127.00	C10F-14-42H-GALV	1142.00	C10S-14-42H-GALV	82
	48"	GALVANIZED	1158.00	C10F-14-48H-GALV	1172.00	C10S-14-48H-GALV	87
	54"	GALVANIZED	1187.00	C10F-14-54H-GALV	1199.00	C10S-14-54H-GALV	92
	60"	GALVANIZED	1217.00	C10F-14-60H-GALV	1232.00	C10S-14-60H-GALV	97
	66"	GALVANIZED	1248.00	C10F-14-66H-GALV	1263.00	C10S-14-66H-GALV	102
	72"	GALVANIZED	1278.00	C10F-14-72H-GALV	1293.00	C10S-14-72H-GALV	107
	84"	GALVANIZED	1338.00	C10F-14-84H-GALV	1353.00	C10S-14-84H-GALV	116
	96"	GALVANIZED	1399.00	C10F-14-96H-GALV	1414.00	C10S-14-96H-GALV	125
	108"	GALVANIZED	1459.00	C10F-14-108H-GALV	1474.00	C10S-14-108H-GALV	134
120"	GALVANIZED	1520.00	C10F-14-120H-GALV	1535.00	C10S-14-120H-GALV	143	

Indicate stem thread when ordering, add suffix to part number:

Right Hand Thread, 3 Teeth per inch = - 3TR

Right Hand Thread, 4 Teeth per inch = - 4TR

Left Hand Thread, 4 Teeth per inch = -4TL

Additional options may be added, contact factory for assistance and quotation.

Frame also available in painted steel or stainless steel. Contact factory for quotation.

C-10 RED TOP CANAL GATES

C-10 CANAL GATES

GATE SIZE (DIAMETER)	"H" FRAME HEIGHT	FRAME MATERIAL	FLAT BACK		SPIGOT BACK (For CMP)		WEIGHT (LBS.)
15"	30"	GALVANIZED	1084.00	C10F-15-30H-GALV	1115.00	C10S-15-30H-GALV	86
	36"	GALVANIZED	1113.00	C10F-15-36H-GALV	1145.00	C10S-15-36H-GALV	91
	42"	GALVANIZED	1144.00	C10F-15-42H-GALV	1175.00	C10S-15-42H-GALV	96
	48"	GALVANIZED	1174.00	C10F-15-48H-GALV	1206.00	C10S-15-48H-GALV	101
	54"	GALVANIZED	1205.00	C10F-15-54H-GALV	1235.00	C10S-15-54H-GALV	106
	60"	GALVANIZED	1234.00	C10F-15-60H-GALV	1266.00	C10S-15-60H-GALV	111
	66"	GALVANIZED	1265.00	C10F-15-66H-GALV	1296.00	C10S-15-66H-GALV	116
	72"	GALVANIZED	1295.00	C10F-15-72H-GALV	1327.00	C10S-15-72H-GALV	121
	84"	GALVANIZED	1355.00	C10F-15-84H-GALV	1386.00	C10S-15-84H-GALV	130
	96"	GALVANIZED	1416.00	C10F-15-96H-GALV	1447.00	C10S-15-96H-GALV	139
	108"	GALVANIZED	1476.00	C10F-15-108H-GALV	1507.00	C10S-15-108H-GALV	148
	120"	GALVANIZED	1537.00	C10F-15-120H-GALV	1568.00	C10S-15-120H-GALV	157
16"	32"	GALVANIZED	1280.00	C10F-16-32H-GALV	1250.00	C10S-16-32H-GALV	88
	36"	GALVANIZED	1301.00	C10F-16-36H-GALV	1327.00	C10S-16-36H-GALV	93
	42"	GALVANIZED	1331.00	C10F-16-42H-GALV	1356.00	C10S-16-42H-GALV	98
	48"	GALVANIZED	1361.00	C10F-16-48H-GALV	1386.00	C10S-16-48H-GALV	103
	54"	GALVANIZED	1392.00	C10F-16-54H-GALV	1417.00	C10S-16-54H-GALV	108
	60"	GALVANIZED	1422.00	C10F-16-60H-GALV	1447.00	C10S-16-60H-GALV	113
	66"	GALVANIZED	1452.00	C10F-16-66H-GALV	1477.00	C10S-16-66H-GALV	118
	72"	GALVANIZED	1482.00	C10F-16-72H-GALV	1507.00	C10S-16-72H-GALV	123
	84"	GALVANIZED	1543.00	C10F-16-84H-GALV	1568.00	C10S-16-84H-GALV	133
	96"	GALVANIZED	1603.00	C10F-16-96H-GALV	1628.00	C10S-16-96H-GALV	143
	108"	GALVANIZED	1664.00	C10F-16-108H-GALV	1689.00	C10S-16-108H-GALV	153
	120"	GALVANIZED	1724.00	C10F-16-120H-GALV	1749.00	C10S-16-120H-GALV	163
18"	36"	GALVANIZED	1444.00	C10F-18-36H-GALV	1496.00	C10S-18-36H-GALV	116
	42"	GALVANIZED	1482.00	C10F-18-42H-GALV	1519.00	C10S-18-42H-GALV	121
	48"	GALVANIZED	1520.00	C10F-18-48H-GALV	1556.00	C10S-18-48H-GALV	126
	54"	GALVANIZED	1557.00	C10F-18-54H-GALV	1593.00	C10S-18-54H-GALV	131
	60"	GALVANIZED	1594.00	C10F-18-60H-GALV	1631.00	C10S-18-60H-GALV	136
	66"	GALVANIZED	1632.00	C10F-18-66H-GALV	1668.00	C10S-18-66H-GALV	141
	72"	GALVANIZED	1669.00	C10F-18-72H-GALV	1706.00	C10S-18-72H-GALV	146
	84"	GALVANIZED	1745.00	C10F-18-84H-GALV	1780.00	C10S-18-84H-GALV	156
	96"	GALVANIZED	1819.00	C10F-18-96H-GALV	1855.00	C10S-18-96H-GALV	166
	108"	GALVANIZED	1894.00	C10F-18-108H-GALV	1930.00	C10S-18-108H-GALV	176
	120"	GALVANIZED	1969.00	C10F-18-120H-GALV	2005.00	C10S-18-120H-GALV	186

Indicate stem thread when ordering, add suffix to part number:

Right Hand Thread, 3 Teeth per inch = -3TR

Right Hand Thread, 4 Teeth per inch = -4TR

Left Hand Thread, 4 Teeth per inch = -4TL

Additional options may be added, contact factory for assistance and quotation.

Frame also available in painted steel or stainless steel. Contact factory for quotation.

C-10 RED TOP CANAL GATES

C-10 GATE

GATE SIZE (DIAMETER)	"H" FRAME HEIGHT	FRAME MATERIAL	FLAT BACK		SPIGOT BACK (For CMP)		WEIGHT (LBS.)
20"	38"	GALVANIZED	1811.00	C10F-20-38H-GALV	1836.00	C10S-20-38H-GALV	151
	42"	GALVANIZED	1819.00	C10F-20-42H-GALV	1848.00	C10S-20-42H-GALV	156
	48"	GALVANIZED	1857.00	C10F-20-48H-GALV	1885.00	C10S-20-48H-GALV	161
	54"	GALVANIZED	1894.00	C10F-20-54H-GALV	1916.00	C10S-20-54H-GALV	166
	60"	GALVANIZED	1931.00	C10F-20-60H-GALV	1946.00	C10S-20-60H-GALV	171
	66"	GALVANIZED	1969.00	C10F-20-66H-GALV	1976.00	C10S-20-66H-GALV	176
	72"	GALVANIZED	2006.00	C10F-20-72H-GALV	2006.00	C10S-20-72H-GALV	181
	84"	GALVANIZED	2081.00	C10F-20-84H-GALV	2067.00	C10S-20-84H-GALV	191
	96"	GALVANIZED	2156.00	C10F-20-96H-GALV	2127.00	C10S-20-96H-GALV	201
	108"	GALVANIZED	2231.00	C10F-20-108H-GALV	2201.00	C10S-20-108H-GALV	211
	120"	GALVANIZED	2305.00	C10F-20-120H-GALV	2277.00	C10S-20-120H-GALV	221
21"	42"	GALVANIZED	1923.00	C10F-21-42H-GALV	1989.00	C10S-21-42H-GALV	167
	48"	GALVANIZED	1960.00	C10F-21-48H-GALV	2027.00	C10S-21-48H-GALV	172
	54"	GALVANIZED	1998.00	C10F-21-54H-GALV	2064.00	C10S-21-54H-GALV	177
	60"	GALVANIZED	2035.00	C10F-21-60H-GALV	2102.00	C10S-21-60H-GALV	182
	66"	GALVANIZED	2072.00	C10F-21-66H-GALV	2139.00	C10S-21-66H-GALV	187
	72"	GALVANIZED	2110.00	C10F-21-72H-GALV	2176.00	C10S-21-72H-GALV	192
	84"	GALVANIZED	2184.00	C10F-21-84H-GALV	2252.00	C10S-21-84H-GALV	202
	96"	GALVANIZED	2260.00	C10F-21-96H-GALV	2326.00	C10S-21-96H-GALV	212
	108"	GALVANIZED	2335.00	C10F-21-108H-GALV	2401.00	C10S-21-108H-GALV	222
	120"	GALVANIZED	2409.00	C10F-21-120H-GALV	2476.00	C10S-21-120H-GALV	232
24"	44"	GALVANIZED	2025.00	C10F-24-44H-GALV	2093.00	C10S-24-44H-GALV	207
	48"	GALVANIZED	2062.00	C10F-24-48H-GALV	2130.00	C10S-24-48H-GALV	212
	54"	GALVANIZED	2099.00	C10F-24-54H-GALV	2168.00	C10S-24-54H-GALV	217
	60"	GALVANIZED	2137.00	C10F-24-60H-GALV	2205.00	C10S-24-60H-GALV	222
	66"	GALVANIZED	2174.00	C10F-24-66H-GALV	2242.00	C10S-24-66H-GALV	227
	72"	GALVANIZED	2212.00	C10F-24-72H-GALV	2280.00	C10S-24-72H-GALV	232
	84"	GALVANIZED	2286.00	C10F-24-84H-GALV	2355.00	C10S-24-84H-GALV	242
	96"	GALVANIZED	2362.00	C10F-24-96H-GALV	2430.00	C10S-24-96H-GALV	252
	108"	GALVANIZED	2436.00	C10F-24-108H-GALV	2505.00	C10S-24-108H-GALV	262
		120"	GALVANIZED	2511.00	C10F-24-120H-GALV	2579.00	C10S-24-120H-GALV
30"	54"	GALVANIZED	3030.00	C10F-30-54H-GALV	3140.00	C10S-30-54H-GALV	390
	60"	GALVANIZED	3074.00	C10F-30-60H-GALV	3184.00	C10S-30-60H-GALV	396
	66"	GALVANIZED	3118.00	C10F-30-66H-GALV	3228.00	C10S-30-66H-GALV	402
	72"	GALVANIZED	3206.00	C10F-30-72H-GALV	3316.00	C10S-30-72H-GALV	408
	84"	GALVANIZED	3294.00	C10F-30-84H-GALV	3405.00	C10S-30-84H-GALV	420
	96"	GALVANIZED	3383.00	C10F-30-96H-GALV	3493.00	C10S-30-96H-GALV	432
	108"	GALVANIZED	3471.00	C10F-30-108H-GALV	3581.00	C10S-30-108H-GALV	444
		120"	GALVANIZED	3559.00	C10F-30-120H-GALV	3669.00	C10S-30-120H-GALV

Indicate stem thread when ordering, add suffix to part number:

Right Hand Thread, 3 Teeth per inch = - 3TR

Right Hand Thread, 4 Teeth per inch = - 4TR

Left Hand Thread, 4 Teeth per inch = -4TL

Additional options may be added, contact factory for assistance and quotation.

Frame also available in painted steel or stainless steel. Contact factory for quotation.

C-10 RED TOP CANAL GATES

C-10 CANAL GATES

GATE SIZE (DIAMETER)	"H" FRAME HEIGHT	FRAME MATERIAL	FLAT BACK		SPIGOT BACK (For CMP)		WEIGHT (LBS.)
36"	62"	GALVANIZED	3522.00	C10F-36-62H-GALV	3831.00	C10S-36-62H-GALV	534
	72"	GALVANIZED	3596.00	C10F-36-72H-GALV	3904.00	C10S-36-72H-GALV	550
	84"	GALVANIZED	3684.00	C10F-36-84H-GALV	3993.00	C10S-36-84H-GALV	566
	96"	GALVANIZED	3772.00	C10F-36-96H-GALV	4081.00	C10S-36-96H-GALV	582
	108"	GALVANIZED	3860.00	C10F-36-108H-GALV	4169.00	C10S-36-108H-GALV	598
	120"	GALVANIZED	3948.00	C10F-36-120H-GALV	4257.00	C10S-36-120H-GALV	614
42"	84"	GALVANIZED	6413.00	C10F-42-84H-GALV	6862.00	C10S-42-84H-GALV	690
	96"	GALVANIZED	6501.00	C10F-42-96H-GALV	6950.00	C10S-42-96H-GALV	706
	108"	GALVANIZED	7358.00	C10F-42-108H-GALV	7215.00	C10S-42-108H-GALV	722
	120"	GALVANIZED	7460.00	C10F-42-120H-GALV	7303.00	C10S-42-120H-GALV	738
48"	90"	GALVANIZED	8159.00	C10F-48-90H-GALV	8576.00	C10S-48-90H-GALV	950
	96"	GALVANIZED	8203.00	C10F-48-96H-GALV	8620.00	C10S-48-96H-GALV	966
	108"	GALVANIZED	8291.00	C10F-48-108H-GALV	8708.00	C10S-48-108H-GALV	982
	120"	GALVANIZED	8379.00	C10F-48-120H-GALV	8796.00	C10S-48-120H-GALV	998
54"	108"	GALVANIZED	13869.00	C10F-54-108H-GALV	14425.00	C10S-54-108H-GALV	1390
	120"	GALVANIZED	14049.00	C10F-54-120H-GALV	14606.00	C10S-54-120H-GALV	1430
60"	108"	GALVANIZED	13869.00	C10F-60-108H-GALV	15540.00	C10S-60-108H-GALV	2005
	120"	GALVANIZED	14054.00	C10F-60-120H-GALV	15701.00	C10S-60-120H-GALV	2025
72"	122"	GALVANIZED	30630.00	C10F-72-122H-GALV	31088.00	C10S-72-122H-GALV	3760

Indicate stem thread when ordering, add suffix to part number:

Right Hand Thread, 3 Teeth per inch = - 3TR

Right Hand Thread, 4 Teeth per inch = - 4TR

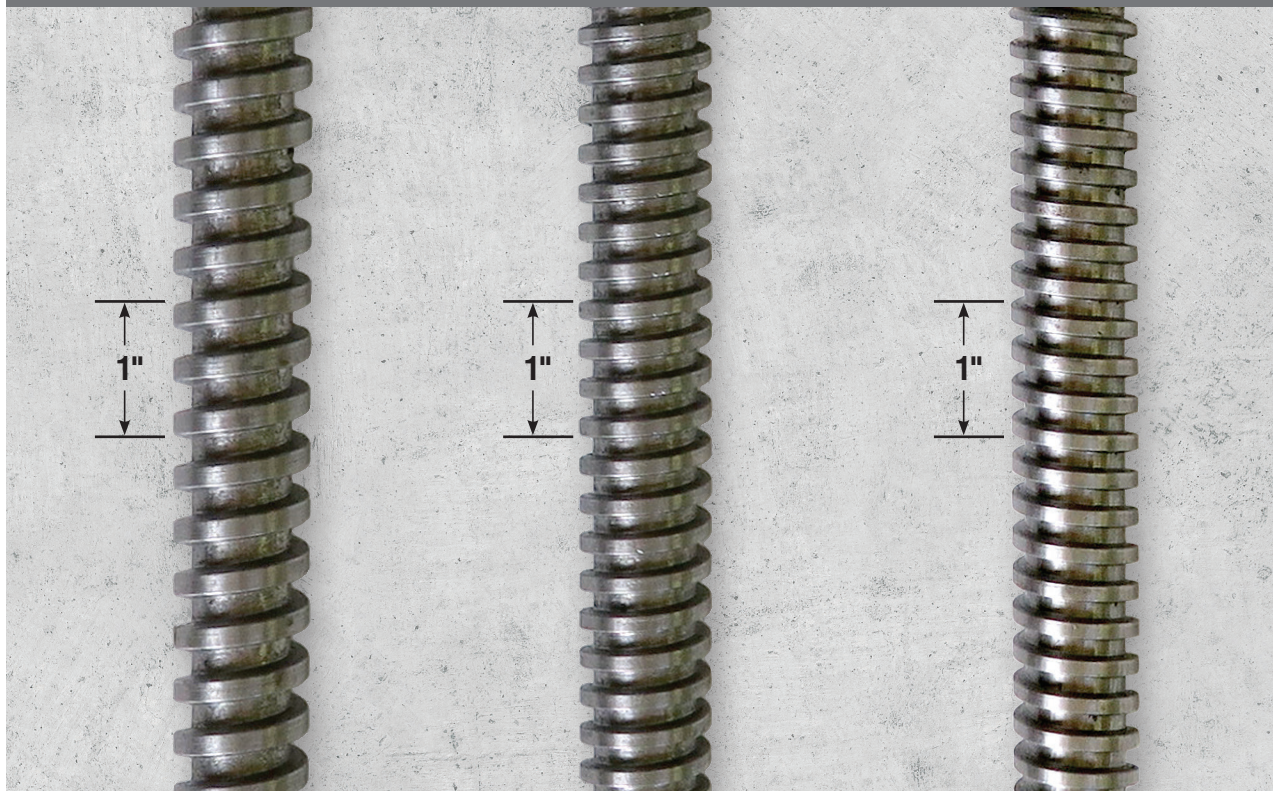
Left Hand Thread, 4 Teeth per inch = -4TL

Additional options may be added, contact factory for assistance and quotation.

Frame also available in painted steel or stainless steel. Contact factory for quotation.

Canal Gate Stem Thread Identification Guide

Use these photos to help you identify the stem thread of an existing Waterman gate.*



3TR

Three Threads per Inch
Right Hand Thread
Turning the handwheel
clockwise opens the gate

4TR

Four Threads per Inch
Right Hand Thread
Turning the handwheel
clockwise opens the gate

4TL

Four Threads per Inch
Left Hand Thread
Turning the handwheel
counter-clockwise opens the gate
Least common. Less intuitive

*images not to scale

C-10 RED TOP CANAL GATE OPTIONS

C-10 GATE OPTIONS

OPTIONS TO ADD TO STANDARD GATE	ADDITIONAL COST / GATE SIZE					
	6"	8"	10"	12"	14"	15"
CIP Frame Adapter (for PIP & SCH 40 PVC)	223.00 40006159	1118.00 40008159	1765.00 40010159	1890.00 40012159	N/A	N/A
Type 4 Spigot¹ Adapter (Low Head PIP)	236.00 40006153	248.00 40008153	266.00 40010153	308.00 40012153	N/A	POA
Taper Setting Collar for Concrete Pipe (C-10C) (for Concrete Pipe) Add to Flatback Only	233.00 47806154	244.00 47808154	252.00 47810154	258.00 47812154	266.00 47814154	272.00 47815154
CL-10 Square Cover Flat Square Bottom Slide	N/A	POA	POA	POA	POA	POA
Limit Nut (Std.)² Galvanized	91.00 710820731	91.00 710820731	91.00 710820731	91.00 710820731	91.00 710820731	91.00 710820731
Tamper-Resistant Limit Nut² Galvanized 4 TPI RH (LH & 3TPI avail.)	136.00 71082842	136.00 71082842	136.00 71082842	136.00 71082842	136.00 71082842	136.00 71082842
Non-Rising Extension Brackets (PR)	333.00 54201001	333.00 54201001	333.00 54201001	333.00 54201001	333.00 54201001	333.00 54201001
Non-Rising Extension Pipe Assembled (per ft.)	143.00 54201002	143.00 54201002	143.00 54201002	143.00 54201002	143.00 54201002	143.00 54201002
Non-Rising Stem Adaption (CL-10 Cover Only)	POA	POA	POA	POA	POA	POA
Rising Stem Extension Brackets (PR)	176.00 54209001	176.00 54209001	176.00 54209001	176.00 54209001	176.00 54209001	176.00 54209001
Rising Stem Extension Pipe & Stem Assembled (per ft.)	143.00 54201002	143.00 54201002	143.00 54201002	143.00 54201002	143.00 54201002	143.00 54201002
Machined Flatback Frame to Fit O.D. Steel Pipe	POA	POA	POA	POA	POA	POA
HDPE Flange Adapter³ (for HDPE & SDR35)	POA	POA	POA	POA	POA	POA

Notes: Special Paint and/or Special Materials - Call for Quote

¹ Type 4 is designed for Low Head pipe

² When ordering Limit Nuts, please specify Left Hand or Right Hand
710821731 3 TPI Right Hand

³ HDPE Adapters can be made to fit most pipe specifications

If bronze seat required, use C-20 gate.

Non-rising extension hardware is used to place handle and stem at a consistent location.

STEM GUIDE ORDERING INFORMATION C-10

C-10 Gate Size	Stem Diameter For Stem Guides	Model	Price
6-16"	7/8"	SK-1	POA
18-24"	1"	SK-1	POA
30-36"	1 1/8"	SK-1	POA
42-48"	1 1/2"	SK-1	POA
54-72"	2"	SK-2	POA

Stem guides also available in stainless steel, call for price.



Model C-10

OPTIONS TO ADD TO STANDARD GATE	ADDITIONAL COST / GATE SIZE					
	16"	18"	20"	21"	24"	30"
Type 4 Spigot¹ Adapter (Low Head PIP)	N/A	POA 40018153	N/A	N/A	N/A	N/A
Taper Setting Collar for Concrete Pipe (C-10C) (for Concrete Pipe) Add to Flatback Only	277.00 47816154	391.00 47818154	402.00 47820154	410.00 47821154	423.00 47824154	472.00 47830154
CL-10 Square Cover Flat Square Bottom Slide	POA	POA	N/A	N/A	POA	POA
Limit Nut (Std.)² Galvanized	91.00 710820731	91.00 710820821	91.00 710820821	91.00 710820821	91.00 710820821	109.00 710821131
Tamper-Resistant Limit Nut² Galvanized 4 TPI RH (LH & 3TPI avail.)	136.00 71082842	160.00 71082844	160.00 71082844	160.00 71082844	160.00 71082844	170.00 71082848
Non-Rising Extension Brackets (PR)	333.00 54201001	339.00 54202001	339.00 54202001	339.00 54202001	339.00 54202001	477.00 54203001
Non-Rising Extension Pipe Assembled (per ft.)	143.00 54201002	143.00 54201002	143.00 54201002	143.00 54201002	143.00 54201002	143.00 54201002
Non-Rising Stem Adaption (CL-10 Cover Only)	POA	POA	N/A	POA	POA	POA
Rising Stem Extension Brackets (PR)	176.00 54209001	212.00 54211001	212.00 54211001	212.00 54211001	212.00 54211001	212.00 54211001
Rising Stem Extension Pipe & Stem Assembled (per ft.)	143.00 54201002	143.00 54201002	143.00 54201002	143.00 54201002	143.00 54201002	143.00 54201002
Machined Flatback Frame to Fit O.D. Steel Pipe	POA	POA	POA	POA	POA	POA
HDPE Flange Adapter³ (for HDPE & SDR35)	POA	POA	POA	POA	POA	POA
Type II Lift w/ Thrust Bearings (for easier operation)	POA	POA	POA	POA	POA	POA

Notes: Special Paint and/or Special Materials - Call for Quote

¹ Type 4 is designed for Low Head pipe

² When ordering Limit Nuts, please specify Left Hand or Right Hand
710821731 3 TPI Right Hand

³ HDPE Adapters can be made to fit most pipe specifications

If bronze seat required, use C-20 gate.

FRAME TYPE GUIDE

F = Flatwall/Flatback mounting

S = Spigot back for spiral or annular corrugated pipe

CIP = Solvent cementing back for PIP + SCH 40 pipe

C = Galvanized steel tapered collar for concrete pipe

Type 4 = Mounting in plastic pipe with 2-part epoxy



C-10 RED TOP® GATE OPTIONS

C-10 GATE OPTIONS

OPTIONS TO ADD TO STANDARD GATE	ADDITIONAL COST / GATE SIZE					
	36"	42"	48"	54"	60"	72"
Taper Setting Collar for Concrete Pipe (C-10C) (for Concrete Pipe) Add to Flatback Only	509.00 47836154	534.00 47842154	POA 47848154	N/A	N/A	N/A
CL-10 Square Cover Flat Square Bottom Slide	POA	POA	N/A	N/A	N/A	N/A
Limit Nut (Std.)² Galvanized	109.00 710821131	109.00 710821721	109.00 710821721	145.00 10821911	145.00 10821911	145.00 10821911
Tamper-Resistant Limit Nut² Galvanized 4 TPI RH (LH & 3TPI avail.)	170.00 71082848	170.00 710828412	170.00 710828412	POA	POA	POA
Non-Rising Extension Brackets (PR)	477.00 54203001	544.00 54204001	544.00 54204001	544.00 54204001	544.00 54204001	N/A
Non-Rising Extension Pipe Assembled (per ft.)	188.00 54201003	POA 305000006	POA 305000006	POA	POA	N/A
Non-Rising Stem Adaption (CL-10 Cover Only)	POA	N/A	N/A	N/A	N/A	N/A
Rising Stem Extension Brackets (PR)	212.00 54211001	423.00 54212001	423.00 54212001	423.00 54212001	423.00 54212001	N/A
Rising Stem Extension Pipe & Stem Assembled (per ft. sizes 42" and above use 2" Schedule 40 metal pipe)	143.00 54201003	POA 54201102	POA 54201102	POA 305000006	POA 305000006	N/A
Machined Flatback Frame to Fit O.D. Steel Pipe	POA	POA	POA	N/A	N/A	N/A
HDPE Flange Adapter³ (for HDPE & SDR35)	POA	POA	POA	POA	POA	POA
Type II Lift w/ Thrust Bearings (for easier operation)	POA	POA	POA 48884543 for 1.5" 4RH	POA 48884541	POA 4884854128 for 2" stem	POA

Notes: Special Paint and/or Special Materials - Call for Quote

¹ Type 4 is designed for Low Head pipe

² When ordering Limit Nuts, please specify Left Hand or Right Hand
710821731 3 TPI Right Hand

³ HDPE Adapters can be made to fit most pipe specifications

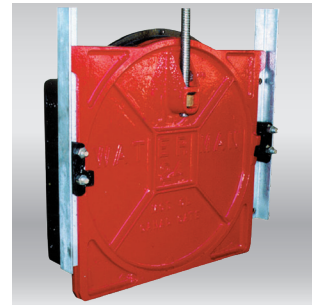
If bronze seat required, use C-20 gate.

C-10

Waterman C-10 canal gates are built-to-last, offering a typical field life exceeding 40 years. They offer superior construction and performance to "look alike" products across a wide range of applications. They are designed for installations with pressure in the seating direction.

Waterman advantages include:

- Superior sealing with 2-bolt wedges standard (competitors use only one bolt).
- Thicker, heavier material for rails, assures reliable performance and prevents deflection.
- Compatibility with existing installations.
- Wide choice of mounting options and pipe adapters.



Model C-10 Flat plate square bottom cover

PART	GATE SIZE				
	6"	8"	10"	12"	14"
A Frame Ring – Flat Back	228.00 40006150	232.00 40008150	238.00 40010150	248.00 40012150	423.00 40014150
B Frame Ring – Spigot Back (For CMP)	236.00 40006152	254.00 40008152	266.00 40010152	308.00 40012152	423.00 40014151
C Cover (Slide)	302.00 41006150	333.00 41008150	345.00 41010150	357.00 41012150	453.00 41014150
D Left Wedge	41.00 71120880002	41.00 71120880002	41.00 71120880002	41.00 71120880002	41.00 71120880002
E Right Wedge	41.00 71120890002	41.00 71120890002	41.00 71120890002	41.00 71120890002	41.00 71120890002
Top Rail – Painted	70.00 47606024	70.00 47608024	70.00 47610024	79.00 47612024	84.00 47614024
Top Rail – Galvanized	68.00 47606025	68.00 47608025	68.00 47610025	77.00 47612025	82.00 47614025
Right Guide Rails - Galvanized (Price per foot)	71.00 47506025	71.00 47508025	71.00 47510025	71.00 47512025	71.00 47514027
Left Guide Rails - Galvanized (Price per foot)	71.00 47406025	71.00 47408025	71.00 47410025	71.00 47412025	71.00 47414027
F Thrust Collar / Lift Collar	19.00 48000005	19.00 48000005	19.00 48000005	19.00 48000005	19.00 48000005
G Collar Bolts w/ Nut (ea.)	8.00 2042	8.00 2042	8.00 2042	8.00 2042	8.00 2042
H Bronze Lift Nut	76.00	76.00	76.00	76.00	76.00
3 TPI - Right Hand	4840523111	4840523111	4840523111	4840523111	4840523111
4 TPI - Right Hand	484052312	484052312	484052312	484052312	484052312
4 TPI - Left Hand	484052313	484052313	484052313	484052313	484052313
I Handwheel (10" diameter used on 6-16" gates)	55.00 49510093	55.00 49510093	55.00 49510093	55.00 49510093	55.00 49510093
J Wedge Bolts (includes nut and washer) (ea. for sizes to 15", studs (pictured) are furnished.)	22.00 7600503528	22.00 7600503528	22.00 7600503528	22.00 7600503528	22.00 7600503528
K Assembly Bolts (includes nut and washer)	32.00 80800100	32.00 80800100	32.00 80800100	32.00 80800100	32.00 80800100
UHMW Washers (includes nut and washer) (ea.)	7.00 71024591	7.00 71024591	7.00 71024591	7.00 71024591	7.00 71024591



C-10 RED TOP® GATE PARTS

C-10 GATE PARTS

PART	GATE SIZE					
	15"	16"	18"	20"	21"	24"
A Frame Ring – Flat Back	453.00 40015150	471.00 40016150	477.00 40018150	785.00 40020150	785.00 40021150	882.00 40024150
B Frame Ring – Spigot Back (For CMP)	483.00 40015152	496.00 40016152	496.00 40018152	816.00 40020152	816.00 40021152	954.00 40024152
C Cover (Slide)	840.00 41015150	846.00 41016150	876.00 41018150	936.00 41020150	960.00 41021150	979.00 41024150
D Left Wedge	41.00 71120880002	49.00 71120900002	49.00 71120900002	49.00 71120900002	49.00 71120900002	49.00 71120900002
E Right Wedge	41.00 71120890002	49.00 71120910002	49.00 71120910002	49.00 71120910002	49.00 71120910002	49.00 71120910002
Top Rail – Painted	92.00 47615024	98.00 47616024	101.00 47618024	103.00 47620024	103.00 47621024	115.00 47624024
Top Rail – Galvanized	90.00 47615025	96.00 47616025	99.00 47618025	101.00 47620025	101.00 47621025	112.00 47624025
Left Guide Rails – Galvanized (Price per Foot)	71.00	71.00	71.00	71.00	71.00	71.00
Right Guide Rails – Galvanized (Price per Foot)	71.00	71.00	71.00	71.00	71.00	71.00
F Thrust Collar / Lift Collar	19.00 48000005	19.00 48000005	26.00 48000010	26.00 48000010	26.00 48000010	26.00 48000010
G Collar Bolts w/ Nut (ea.)	8.00 2042	8.00 2042	8.00 2042	8.00 2042	8.00 2042	8.00 2042
H Bronze Lift Nut	76.00	76.00	108.00	108.00	108.00	108.00
3 TPI - Right Hand	4840523111	4840523111	484103311-3TR	484103311-3TR	484103311-3TR	484103311-3TR
4 TPI - Right Hand	484052312	484052312	484103312	484103312	484103312	484103312
4 TPI - Left Hand	484052313	484052313	484103313	484103313	484103313	484103313
I Handwheel	55.00 49510093	55.00 49510093	94.00 49512153	94.00 49512153	94.00 49512153	94.00 49512153
J Wedge Bolts (ea. for sizes above 15", hex bolts with nut and washer are provided.)	22.00 7600503528	22.00 80001001	22.00 80001001	22.00 80001001	22.00 80001001	22.00 80001001
K Assembly Bolts (includes nut and washer) (ea.)	32.00 80800100	32.00 80800100	32.00 80800100	32.00 80800100	32.00 80800100	32.00 80800100
UHMW Washers (ea.)	7.00 71024591	7.00 71024591	7.00 71024592	7.00 71024592	7.00 71024592	7.00 71024592



C-10 RED TOP® GATE PARTS

C-10 GATE PARTS

PART	GATE SIZE						
	30"	36"	42"	48"	54"	60"	72"
A Frame Ring – Flat Back	1691.00 40030150	1721.00 40036150	2822.00 40042150	4227.00 40048150	8091.00 40054150	8453.00 40060150	9902.00 40072150
B Frame Ring – Spigot Back (For CMP)	1812.00 40030152	1842.00 40036152	3472.00 40042152	4347.00 40048152	8332.00 40054152	8936.00 40060152	12521.00 40072152
C Cover (Slide)	1600.00 41030150	2054.00 41036150	3864.00 41042150	4951.00 41048150	9087.00 41054150	10874.00 41060150	13283.00 41072150
D Left Wedge	82.00 71121450002	82.00 71121450002	82.00 71121450002	82.00 71121450002	196.00 71104840101	196.00 71104840101	243.00 71114260101
E Right Wedge	82.00 71121460002	82.00 71121460002	82.00 71121460002	82.00 71121460002	196.00 71104840201	196.00 71104840201	243.00 71114260201
Top Rail – Painted	143.00 47630024	229.00 47636024	281.00 47642024	320.00 47648024	336.00 47654024	356.00 47660024	709.00 47672024
Top Rail – Galvanized	140.00 47630025	224.00 47636025	275.00 47642025	312.00 47648025	329.00 47654025	349.00 47660025	695.00 47672025
Left Guide Rails – Galvanized (Price per Foot)	83.00	83.00	98.00	98.00	149.00	155.00	179.00
Right Guide Rails – Galvanized (Price per Foot)	83.00	83.00	98.00	98.00	149.00	155.00	179.00
F Thrust Collar / Lift Collar	30.00 48000015	30.00 48000015	75.00 48000020	110.00 48000026	110.00 48000026	110.00 48000026	N/A
G Collar Bolts w/ Nut (ea.)	8.00 2049	8.00 2049	10.00 2063	10.00 2063	10.00 2063	10.00 2063	N/A
H Bronze Lift Nut	339.00	339.00	598.00	598.00	598.00	598.00	N/A
3 TPI - Right Hand	484154311	484154311	N/A				
4 TPI - Right Hand	484154312	484154312	4842054161	4842054161	4842054161	4842054161	
4 TPI - Left Hand	484154313	484154313	4842054151	4842054151	4842054181	4842054181	
I Handwheel	112.00 49515181	112.00 49515181	185.00 49518250	199.00 49524243	600.00 49530243	600.00 49530243	N/A
J Wedge Bolts (ea.)	22.00 80001002	22.00 2069	26.00 2011	26.00 2011	26.00 2011	26.00 2011	26.00 2011
K Assembly Bolts	87.00 80801100	87.00 80801100	87.00 80801100	87.00 80801100	87.00 80801100	87.00 80801100	87.00 80801100
UHMW Washers (ea.)	7.00 71024593	7.00 71024593	7.00 71024594				
Bearing (ea.)				199.00 84501037	199.00 84501037	199.00 84501037	N/A



C-20 RED TOP® CANAL GATES

C-20 CANAL GATES



Model C-20

C-20

Designed for applications with either seating or unseating heads, Waterman C-20 canal gates are built-to-last, offering a typical field life exceeding 40 years. They offer superior construction and performance to “look alike” products across a wide range of applications.

Waterman advantages include:

- Superior sealing with 2-bolt wedges standard (competitors use only one bolt).
- Thicker, heavier material for rails, assures reliable performance and prevents deflection.
- Compatibility with existing installations.
- Wide choice of mounting options and pipe adapters.
- Options for non-rising stem, rising stem extensions to accommodate a wide variety of special site requirements. See page 3 for further information.
- Available with brass seats.

GATE SIZE	“H” FRAME HEIGHT	MATERIAL	FLAT BACK		SPIGOT BACK (For CMP)		WEIGHT (LBS.)
8"	24"	GALVANIZED	1296.00	C20F-8-24H-GALV	1351.00	C20S-8-24H-GALV	69
	30"	GALVANIZED	1327.00	C20F-8-30H-GALV	1380.00	C20S-8-30H-GALV	74
	36"	GALVANIZED	1356.00	C20F-8-36H-GALV	1411.00	C20S-8-36H-GALV	79
	42"	GALVANIZED	1386.00	C20F-8-42H-GALV	1441.00	C20S-8-42H-GALV	84
	48"	GALVANIZED	1417.00	C20F-8-48H-GALV	1472.00	C20S-8-48H-GALV	89
	54"	GALVANIZED	1447.00	C20F-8-54H-GALV	1501.00	C20S-8-54H-GALV	94
	60"	GALVANIZED	1477.00	C20F-8-60H-GALV	1531.00	C20S-8-60H-GALV	99
	66"	GALVANIZED	1507.00	C20F-8-66H-GALV	1562.00	C20S-8-66H-GALV	104
	72"	GALVANIZED	1538.00	C20F-8-72H-GALV	1592.00	C20S-8-72H-GALV	109
	84"	GALVANIZED	1598.00	C20F-8-84H-GALV	1652.00	C20S-8-84H-GALV	118
	96"	GALVANIZED	1658.00	C20F-8-96H-GALV	1713.00	C20S-8-96H-GALV	127
	108"	GALVANIZED	1718.00	C20F-8-108H-GALV	1773.00	C20S-8-108H-GALV	136
120"	GALVANIZED	1779.00	C20F-8-120H-GALV	1834.00	C20S-8-120H-GALV	145	

Include this footer block below table on each page it appears:

When ordering, add suffix to part number to indicate stem thread pattern:

Right Hand Thread, 3 Teeth per inch = - 3TR

Right Hand Thread, 4 Teeth per inch = - 4TR

Left Hand Thread, 4 Teeth per inch = -4TL

Frame material also available in painted steel and stainless steel. Contact factory for details and pricing.

Additional options may be added, contact factory for details and pricing.

GATE SIZE	"H" FRAME HEIGHT	MATERIAL	FLAT BACK		SPIGOT BACK (For CMP)		WEIGHT (LBS.)
10"	24"	GALVANIZED	1352.00	C20F-10-24H-GALV	1416.00	C20S-10-24H-GALV	76
	30"	GALVANIZED	1382.00	C20F-10-30H-GALV	1446.00	C20S-10-30H-GALV	81
	36"	GALVANIZED	1412.00	C20F-10-36H-GALV	1476.00	C20S-10-36H-GALV	86
	42"	GALVANIZED	1442.00	C20F-10-42H-GALV	1506.00	C20S-10-42H-GALV	91
	48"	GALVANIZED	1473.00	C20F-10-48H-GALV	1537.00	C20S-10-48H-GALV	96
	54"	GALVANIZED	1503.00	C20F-10-54H-GALV	1567.00	C20S-10-54H-GALV	101
	60"	GALVANIZED	1532.00	C20F-10-60H-GALV	1596.00	C20S-10-60H-GALV	106
	66"	GALVANIZED	1563.00	C20F-10-66H-GALV	1627.00	C20S-10-66H-GALV	111
	72"	GALVANIZED	1593.00	C20F-10-72H-GALV	1657.00	C20S-10-72H-GALV	116
	84"	GALVANIZED	1653.00	C20F-10-84H-GALV	1717.00	C20S-10-84H-GALV	125
	96"	GALVANIZED	1714.00	C20F-10-96H-GALV	1778.00	C20S-10-96H-GALV	134
	108"	GALVANIZED	1774.00	C20F-10-108H-GALV	1838.00	C20S-10-108H-GALV	143
120"	GALVANIZED	1835.00	C20F-10-120H-GALV	1899.00	C20S-10-120H-GALV	152	
12"	24"	GALVANIZED	1520.00	C20F-12-24H-GALV	1561.00	C20S-12-24H-GALV	110
	30"	GALVANIZED	1549.00	C20F-12-30H-GALV	1591.00	C20S-12-30H-GALV	115
	36"	GALVANIZED	1580.00	C20F-12-36H-GALV	1621.00	C20S-12-36H-GALV	120
	42"	GALVANIZED	1610.00	C20F-12-42H-GALV	1651.00	C20S-12-42H-GALV	125
	48"	GALVANIZED	1641.00	C20F-12-48H-GALV	1682.00	C20S-12-48H-GALV	130
	54"	GALVANIZED	1670.00	C20F-12-54H-GALV	1712.00	C20S-12-54H-GALV	135
	60"	GALVANIZED	1700.00	C20F-12-60H-GALV	1741.00	C20S-12-60H-GALV	140
	66"	GALVANIZED	1731.00	C20F-12-66H-GALV	1772.00	C20S-12-66H-GALV	145
	72"	GALVANIZED	1761.00	C20F-12-72H-GALV	1802.00	C20S-12-72H-GALV	150
	84"	GALVANIZED	1821.00	C20F-12-84H-GALV	1862.00	C20S-12-84H-GALV	159
	96"	GALVANIZED	1882.00	C20F-12-96H-GALV	1923.00	C20S-12-96H-GALV	167
	108"	GALVANIZED	1942.00	C20F-12-108H-GALV	1983.00	C20S-12-108H-GALV	176
120"	GALVANIZED	2003.00	C20F-12-120H-GALV	2044.00	C20S-12-120H-GALV	185	

Include this footer block below table on each page it appears:

When ordering, add suffix to part number to indicate stem thread pattern:

Right Hand Thread, 3 Teeth per inch = - 3TR

Right Hand Thread, 4 Teeth per inch = - 4TR

Left Hand Thread, 4 Teeth per inch = -4TL

Frame material also available in painted steel and stainless steel. Contact factory for details and pricing.

Additional options may be added, contact factory for details and pricing.

C-20 RED TOP® CANAL GATES

C-20 CANAL GATES

GATE SIZE	"H" FRAME HEIGHT	MATERIAL	FLAT BACK		SPIGOT BACK (For CMP)		WEIGHT (LBS.)
14"	30"	GALVANIZED	1764.00	C20F-14-30H-GALV	1824.00	C20S-14-30H-GALV	118
	36"	GALVANIZED	1795.00	C20F-14-36H-GALV	1855.00	C20S-14-36H-GALV	123
	42"	GALVANIZED	1825.00	C20F-14-42H-GALV	1885.00	C20S-14-42H-GALV	128
	48"	GALVANIZED	1855.00	C20F-14-48H-GALV	1946.00	C20S-14-48H-GALV	132
	54"	GALVANIZED	1885.00	C20F-14-54H-GALV	1976.00	C20S-14-54H-GALV	137
	60"	GALVANIZED	1916.00	C20F-14-60H-GALV	2006.00	C20S-14-60H-GALV	142
	66"	GALVANIZED	1946.00	C20F-14-66H-GALV	2036.00	C20S-14-66H-GALV	147
	72"	GALVANIZED	1976.00	C20F-14-72H-GALV	2067.00	C20S-14-72H-GALV	152
	84"	GALVANIZED	2036.00	C20F-14-84H-GALV	2127.00	C20S-14-84H-GALV	161
	96"	GALVANIZED	2096.00	C20F-14-96H-GALV	2188.00	C20S-14-96H-GALV	170
	108"	GALVANIZED	2157.00	C20F-14-108H-GALV	2247.00	C20S-14-108H-GALV	179
	120"	GALVANIZED	2217.00	C20F-14-120H-GALV	2308.00	C20S-14-120H-GALV	188
15"	32"	GALVANIZED	1787.00	C20F-15-32H-GALV	1837.00	C20S-15-32H-GALV	122
	36"	GALVANIZED	1805.00	C20F-15-36H-GALV	1857.00	C20S-15-36H-GALV	127
	42"	GALVANIZED	1836.00	C20F-15-42H-GALV	1886.00	C20S-15-42H-GALV	132
	48"	GALVANIZED	1866.00	C20F-15-48H-GALV	1917.00	C20S-15-48H-GALV	137
	54"	GALVANIZED	1897.00	C20F-15-54H-GALV	1947.00	C20S-15-54H-GALV	142
	60"	GALVANIZED	1926.00	C20F-15-60H-GALV	1978.00	C20S-15-60H-GALV	147
	66"	GALVANIZED	1957.00	C20F-15-66H-GALV	2007.00	C20S-15-66H-GALV	152
	72"	GALVANIZED	1987.00	C20F-15-72H-GALV	2037.00	C20S-15-72H-GALV	157
	84"	GALVANIZED	2047.00	C20F-15-84H-GALV	2098.00	C20S-15-84H-GALV	166
	96"	GALVANIZED	2108.00	C20F-15-96H-GALV	2158.00	C20S-15-96H-GALV	175
	108"	GALVANIZED	2168.00	C20F-15-108H-GALV	2219.00	C20S-15-108H-GALV	184
	120"	GALVANIZED	2229.00	C20F-15-120H-GALV	2279.00	C20S-15-120H-GALV	193

Include this footer block below table on each page it appears:

When ordering, add suffix to part number to indicate stem thread pattern:

Right Hand Thread, 3 Teeth per inch = - 3TR

Right Hand Thread, 4 Teeth per inch = - 4TR

Left Hand Thread, 4 Teeth per inch = -4TL

Frame material also available in painted steel and stainless steel. Contact factory for details and pricing.

Additional options may be added, contact factory for details and pricing.

GATE SIZE	"H" FRAME HEIGHT	MATERIAL	FLAT BACK		SPIGOT BACK (For CMP)		WEIGHT (LBS.)
16"	32"	GALVANIZED	2044.00	C20F-16-32H-GALV	2342.00	C20S-16-32H-GALV	125
	36"	GALVANIZED	2063.00	C20F-16-36H-GALV	2378.00	C20S-16-36H-GALV	130
	42"	GALVANIZED	2093.00	C20F-16-42H-GALV	2413.00	C20S-16-42H-GALV	135
	48"	GALVANIZED	2124.00	C20F-16-48H-GALV	2448.00	C20S-16-48H-GALV	140
	54"	GALVANIZED	2153.00	C20F-16-54H-GALV	2485.00	C20S-16-54H-GALV	145
	60"	GALVANIZED	2183.00	C20F-16-60H-GALV	2519.00	C20S-16-60H-GALV	150
	66"	GALVANIZED	2214.00	C20F-16-66H-GALV	2554.00	C20S-16-66H-GALV	155
	72"	GALVANIZED	2244.00	C20F-16-72H-GALV	2590.00	C20S-16-72H-GALV	160
	84"	GALVANIZED	2304.00	C20F-16-84H-GALV	2659.00	C20S-16-84H-GALV	170
	96"	GALVANIZED	2365.00	C20F-16-96H-GALV	2732.00	C20S-16-96H-GALV	180
	108"	GALVANIZED	2425.00	C20F-16-108H-GALV	2802.00	C20S-16-108H-GALV	190
	120"	GALVANIZED	2486.00	C20F-16-120H-GALV	2873.00	C20S-16-120H-GALV	200
18"	36"	GALVANIZED	2223.00	C20F-18-36H-GALV	2446.00	C20S-18-36H-GALV	175
	42"	GALVANIZED	2263.00	C20F-18-42H-GALV	2484.00	C20S-18-42H-GALV	180
	48"	GALVANIZED	2302.00	C20F-18-48H-GALV	2516.00	C20S-18-48H-GALV	185
	54"	GALVANIZED	2342.00	C20F-18-54H-GALV	2553.00	C20S-18-54H-GALV	190
	60"	GALVANIZED	2381.00	C20F-18-60H-GALV	2588.00	C20S-18-60H-GALV	195
	66"	GALVANIZED	2421.00	C20F-18-66H-GALV	2622.00	C20S-18-66H-GALV	200
	72"	GALVANIZED	2459.00	C20F-18-72H-GALV	2658.00	C20S-18-72H-GALV	205
	84"	GALVANIZED	2537.00	C20F-18-84H-GALV	2727.00	C20S-18-84H-GALV	215
	96"	GALVANIZED	2616.00	C20F-18-96H-GALV	2800.00	C20S-18-96H-GALV	225
	108"	GALVANIZED	2695.00	C20F-18-108H-GALV	2870.00	C20S-18-108H-GALV	235
	120"	GALVANIZED	2772.00	C20F-18-120H-GALV	3369.00	C20S-18-120H-GALV	245

Include this footer block below table on each page it appears:

When ordering, add suffix to part number to indicate stem thread pattern:

Right Hand Thread, 3 Teeth per inch = - 3TR

Right Hand Thread, 4 Teeth per inch = - 4TR

Left Hand Thread, 4 Teeth per inch = -4TL

Frame material also available in painted steel and stainless steel. Contact factory for details and pricing.

Additional options may be added, contact factory for details and pricing.

C-20 RED TOP® CANAL GATES

C-20 CANAL GATES

GATE SIZE	"H" FRAME HEIGHT	MATERIAL	FLAT BACK		SPIGOT BACK (For CMP)		WEIGHT (LBS.)
20"	42"	GALVANIZED	2487.00	C20F-20-42H-GALV	2597.00	C20S-20-42H-GALV	210
	48"	GALVANIZED	2520.00	C20F-20-48H-GALV	2631.00	C20S-20-48H-GALV	215
	54"	GALVANIZED	2555.00	C20F-20-54H-GALV	2665.00	C20S-20-54H-GALV	220
	60"	GALVANIZED	2589.00	C20F-20-60H-GALV	2699.00	C20S-20-60H-GALV	225
	66"	GALVANIZED	2623.00	C20F-20-66H-GALV	2734.00	C20S-20-66H-GALV	230
	72"	GALVANIZED	2657.00	C20F-20-72H-GALV	2767.00	C20S-20-72H-GALV	235
	84"	GALVANIZED	2725.00	C20F-20-84H-GALV	2835.00	C20S-20-84H-GALV	245
	96"	GALVANIZED	2793.00	C20F-20-96H-GALV	2904.00	C20S-20-96H-GALV	255
	108"	GALVANIZED	2862.00	C20F-20-108H-GALV	2972.00	C20S-20-108H-GALV	265
	120"	GALVANIZED	3360.00	C20F-20-120H-GALV	3471.00	C20S-20-120H-GALV	275
21"	42"	GALVANIZED	2555.00	C20F-21-42H-GALV	2665.00	C20S-21-42H-GALV	220
	48"	GALVANIZED	2589.00	C20F-21-48H-GALV	2699.00	C20S-21-48H-GALV	225
	54"	GALVANIZED	2623.00	C20F-21-54H-GALV	2734.00	C20S-21-54H-GALV	230
	60"	GALVANIZED	2657.00	C20F-21-60H-GALV	2767.00	C20S-21-60H-GALV	235
	66"	GALVANIZED	2692.00	C20F-21-66H-GALV	2802.00	C20S-21-66H-GALV	240
	72"	GALVANIZED	2725.00	C20F-21-72H-GALV	2835.00	C20S-21-72H-GALV	245
	84"	GALVANIZED	2793.00	C20F-21-84H-GALV	2904.00	C20S-21-84H-GALV	255
	96"	GALVANIZED	2862.00	C20F-21-96H-GALV	2972.00	C20S-21-96H-GALV	265
	108"	GALVANIZED	2930.00	C20F-21-108H-GALV	3040.00	C20S-21-108H-GALV	275
	120"	GALVANIZED	3429.00	C20F-21-120H-GALV	3539.00	C20S-21-120H-GALV	285

Include this footer block below table on each page it appears:

When ordering, add suffix to part number to indicate stem thread pattern:

Right Hand Thread, 3 Teeth per inch = - 3TR

Right Hand Thread, 4 Teeth per inch = - 4TR

Left Hand Thread, 4 Teeth per inch = -4TL

Frame material also available in painted steel and stainless steel. Contact factory for details and pricing.

Additional options may be added, contact factory for details and pricing.

GATE SIZE	"H" FRAME HEIGHT	MATERIAL	FLAT BACK		SPIGOT BACK (For CMP)		WEIGHT (LBS.)
24"	48"	GALVANIZED	3028.00	C20F-24-48H-GALV	3091.00	C20S-24-48H-GALV	265
	54"	GALVANIZED	3068.00	C20F-24-54H-GALV	3131.00	C20S-24-54H-GALV	270
	60"	GALVANIZED	3106.00	C20F-24-60H-GALV	3169.00	C20S-24-60H-GALV	275
	66"	GALVANIZED	3146.00	C20F-24-66H-GALV	3209.00	C20S-24-66H-GALV	280
	72"	GALVANIZED	3185.00	C20F-24-72H-GALV	3247.00	C20S-24-72H-GALV	285
	84"	GALVANIZED	3263.00	C20F-24-84H-GALV	3326.00	C20S-24-84H-GALV	295
	96"	GALVANIZED	3342.00	C20F-24-96H-GALV	3405.00	C20S-24-96H-GALV	305
	108"	GALVANIZED	3420.00	C20F-24-108H-GALV	3483.00	C20S-24-108H-GALV	320
	120"	GALVANIZED	3499.00	C20F-24-120H-GALV	3561.00	C20S-24-120H-GALV	330
30"	60"	GALVANIZED	4488.00	C20F-30-60H-GALV	4772.00	C20S-30-60H-GALV	482
	66"	GALVANIZED	4583.00	C20F-30-66H-GALV	4866.00	C20S-30-66H-GALV	491
	72"	GALVANIZED	4630.00	C20F-30-72H-GALV	4913.00	C20S-30-72H-GALV	500
	84"	GALVANIZED	4677.00	C20F-30-84H-GALV	4961.00	C20S-30-84H-GALV	518
	96"	GALVANIZED	4772.00	C20F-30-96H-GALV	5055.00	C20S-30-96H-GALV	536
	108"	GALVANIZED	4866.00	C20F-30-108H-GALV	5150.00	C20S-30-108H-GALV	554
	120"	GALVANIZED	4488.00	C20F-30-120H-GALV	5244.00	C20S-30-120H-GALV	572

Include this footer block below table on each page it appears:

When ordering, add suffix to part number to indicate stem thread pattern:

Right Hand Thread, 3 Teeth per inch = - 3TR

Right Hand Thread, 4 Teeth per inch = - 4TR

Left Hand Thread, 4 Teeth per inch = -4TL

Frame material also available in painted steel and stainless steel. Contact factory for details and pricing.

Additional options may be added, contact factory for details and pricing.

C-20 RED TOP® CANAL GATES

C-20 CANAL GATES

GATE SIZE	"H" FRAME HEIGHT	MATERIAL	FLAT BACK		SPIGOT BACK (For CMP)		WEIGHT (LBS.)
36"	72"	GALVANIZED	5979.00	C20F-36-72H-GALV	6599.00	C20S-36-72H-GALV	669
	84"	GALVANIZED	6099.00	C20F-36-84H-GALV	6718.00	C20S-36-84H-GALV	687
	96"	GALVANIZED	6219.00	C20F-36-96H-GALV	6838.00	C20S-36-96H-GALV	705
	108"	GALVANIZED	6338.00	C20F-36-108H-GALV	6958.00	C20S-36-108H-GALV	723
	120"	GALVANIZED	6458.00	C20F-36-120H-GALV	7077.00	C20S-36-120H-GALV	741
42"	84"	GALVANIZED	12792.00	C20F-42-84H-GALV	14504.00	C20S-42-84H-GALV	1060
	96"	GALVANIZED	12994.00	C20F-42-96H-GALV	14707.00	C20S-42-96H-GALV	1082
	108"	GALVANIZED	13197.00	C20F-42-108H-GALV	14909.00	C20S-42-108H-GALV	1104
	120"	GALVANIZED	13401.00	C20F-42-120H-GALV	15112.00	C20S-42-120H-GALV	1126
48"	90"	GALVANIZED	19885.00	C20F-48-90H-GALV	21210.00	C20S-48-90H-GALV	1520
	96"	GALVANIZED	20093.00	C20F-48-96H-GALV	21423.00	C20S-48-96H-GALV	1542
	108"	GALVANIZED	20302.00	C20F-48-108H-GALV	21596.00	C20S-48-108H-GALV	1564
	120"	GALVANIZED	20512.00	C20F-48-120H-GALV	21837.00	C20S-48-120H-GALV	1586

Include this footer block below table on each page it appears:

When ordering, add suffix to part number to indicate stem thread pattern:

Right Hand Thread, 3 Teeth per inch = - 3TR

Right Hand Thread, 4 Teeth per inch = - 4TR

Left Hand Thread, 4 Teeth per inch = -4TL

Frame material also available in painted steel and stainless steel. Contact factory for details and pricing.

Additional options may be added, contact factory for details and pricing.

C-20 RED TOP® GATE OPTIONS

C-20 GATE OPTIONS

OPTION	ADDITIONAL COST / GATE SIZE						
	8"	10"	12"	14"	15"	16"	18"
Bronze Seats	POA	POA	POA	POA	POA	POA	POA
Non-Rising Extension Brackets (PR)	333.00 54201001	333.00 54201001	333.00 54201001	333.00 54201001	333.00 54201001	333.00 54201001	477.00 54203001
Non-Rising Extension Pipe Installed (per ft.)	143.00 54201002	143.00 54201002	143.00 54201002	143.00 54201002	143.00 54201002	143.00 54201002	143.00 54201003
Rising Stem Extension Brackets (PR)	176.00 54209001	176.00 54209001	176.00 54209001	176.00 54209001	176.00 54209001	176.00 54209001	212.00 4211001
Rising Stem Pipe & Stem Installed (per ft.)	52.00	52.00	52.00	52.00	52.00	52.00	52.00
Machining for OD Pipe	POA	POA	POA	POA	POA	POA	POA
125 LB. Flange Drilling 150 LB. Drilling also available	POA	POA	POA	POA	POA	POA	POA
Limit Nut (Std.)¹ Galvanized	91.00 710820731	91.00 710820731	91.00 710820731	91.00 710820731	91.00 710820731	91.00 710820731	109.00 710821131
Tamper-Resistant Limit Nut¹ Galvanized 3 TPI RH (Others avail.)	45.00	45.00	45.00	45.00	45.00	45.00	59.00
HDPE Flange Adapter² (for HDPE & SDR35)	POA	POA	POA	POA	POA	POA	POA

Notes: Special Paint and/or Special Materials - Call for Quote

¹ When ordering Limit Nuts, please specify Left Hand or Right Hand

² HDPE Adapters can be made to fit most pipe specifications

STEM GUIDE ORDERING INFORMATION C-20

C-20 Gate Size	Stem Diameter For Stem Guides	Model	Price
8-16"	7/8"	SK-1	POA
18-24"	1 1/8"	SK-1	POA
30-48"	1 1/2"	SK-2	POA



Model C-20

C-20 RED TOP® GATE OPTIONS

C-20 GATE OPTIONS

OPTION	ADDITIONAL COST/GATE SIZE						
	20"	21"	24"	30"	36"	42"	48"
Bronze Seats	POA	POA	POA	POA	POA	POA	POA
Non-Rising Extension Brackets (PR)	477.00 54203001	477.00 54203001	477.00 54203001	477.00 54204001	477.00 54204001	477.00 54204001	477.00 54204001
Non-Rising Extension Pipe Assembled (per ft.)	143.00 54201003	143.00 542010034	143.00 54201003	POA 54201102	POA 54201102	POA 54201102	POA 54201102
Rising Stem Extension Brackets (PR)	212.00 54211001	212.00 54211001	212.00 54211001	423.00 54212001	423.00 54212001	423.00 54212001	423.00 54212001
Rising Stem Extension Pipe & Stem Assembled (per ft.)	52.00	55.00	55.00	71.00	71.00	71.00	71.00
Machining Back for Flange Frame	POA	POA	POA	POA	POA	POA	POA
Machining for OD Pipe	POA	POA	POA	POA	POA	POA	POA
125 LB. Flange Drilling 150 LB. Drilling also available	POA	N/A	POA	POA	POA	POA	POA
Limit Nut (Std.)¹ Galvanized	109.00	109.00	109.00	109.00	109.00	109.00	109.00
Tamper-Resistant Limit Nut¹ Galvanized 3 TPI RH (Others avail.)	POA	POA	POA	POA	POA	POA	POA
Type II Lift w/ Thrust Bearings 4RH (for easier operation)	N/A	N/A	N/A	997.00 48884543	997.00 48884543	997.00 48884543	997.00 48884543
HDPE Flange Adapter² (for HDPE & SDR35)	POA	POA	POA	POA	POA	POA	POA

Notes: Special Paint and/or Special Materials - Call for Quote

¹ When ordering Limit Nuts, please specify Left Hand or Right Hand

² HDPE Adapters can be made to fit most pipe specifications

PART	GATE SIZE						
	8"	10"	12"	14"	15"	16"	18"
A Frame Ring - Flat Back	406.00 40008162	439.00 40010162	510.00 40012162	537.00 40014162	583.00 40015162	812.00 40016162	906.00 40018162
B Frame Ring - Spigot Back (For CMP)	532.00 40008164	550.00 40010164	614.00 40012164	643.00 40014164	875.00 40015164	951.00 40016164	1047.00 40018164
C Cover (Slide)	372.00 41008162	460.00 41010162	494.00 41012162	801.00 41014162	890.00 41015162	1081.00 41016162	1114.00 41018162
D Arch	61.00 44008162	71.00 44010162	63.00 44012162	90.00 44014162	114.00 44015162	204.00 44016162	216.00 44018162
E Right Wedge	44.00 71107270202	44.00 71107270202	44.00 71107270202	44.00 71107270202	44.00 71107270202	44.00 71107270202	78.00 71107350202
F Left Wedge	44.00 71107270102	44.00 71107270102	44.00 71107270102	44.00 71107270102	44.00 71107270102	44.00 71107270102	78.00 71107350102
Top Rail - Painted	136.00 47608040	142.00 47610040	158.00 47612040	170.00 47614040	184.00 47615040	198.00 47616040	209.00 47618040
Top Rail - Galvanized	133.0 47608041	139.00 47610041	155.00 47612041	166.00 47614041	180.00 47615041	194.00 47616041	205.00 47618041
Left Guide Rails - Galvanized (Price per Foot)	71.00	71.00	71.00	71.00	71.00	71.00	71.00
Right Guide Rails - Galvanized (Price per Foot)	71.00	71.00	71.00	71.00	71.00	71.00	71.00
G Thrust Collar / Lift Collar	19.00 48000005	19.00 48000005	19.00 48000005	19.00 48000005	19.00 48000005	19.00 48000005	30.00 48000015
H Collar Bolts w/ Nut (ea.)	8.00 2042	8.00 2042	8.00 2042	8.00 2042	8.00 2042	8.00 2049	8.00 2049
I Bronze Lift Nut	76.00	76.00	76.00	76.00	76.00	76.00	423.00
3 TPI - Right Hand	4840523111	4840523111	4840523111	4840523111	4840523111	4840523111	4841543111
4 TPI - Right Hand	484052312	484052312	484052312	484052312	484052312	484052312	484154312
4 TPI - Left Hand	484052313	484052313	484052313	484052313	484052313	484052313	484154313
J Handwheel	94.00 49512131	94.00 49512131	94.00 49512131	94.00 49512131	94.00 49512131	94.00 49512131	112.00 49515181
Arch Bolt	20.00 1176	20.00 1176	20.00 1176	20.00 1176	20.00 1176	20.00 1176	20.00 1176
Screw Bolt	8.00 2043	8.00 2043	8.00 2043	8.00 2043	8.00 2043	20.00 1176	20.00 2051
K Wedge Bolts (ea.)	20.00 1176	20.00 1176	20.00 1176	20.00 1176	20.00 1176	20.00 1176	20.00 2054
L Frame Bolts (ea.)	8.00 2041	8.00 2041	8.00 2041	8.00 2041	8.00 2041	8.00 2049	8.00 2049
UHMW Washers (includes nut and washer) (ea.)	7.00 71024591	7.00 71024591	7.00 71024591	7.00 71024591	7.00 71024591	7.00 71024591	7.00 71024593



C-20 RED TOP® GATE PARTS

C-20 GATE PARTS

PART	GATE SIZE						
	20"	21"	24"	30"	36"	42"	48"
A Frame Ring - Flat Back	1051.00 40020162	1109.00 40021162	1277.00 40024162	1652.00 40030162	1782.00 40036162	5502.00 40042162	6543.00 40048162
B Frame Ring - Spigot Back (For CMP)	1182.00 40020164	1219.00 40021164	1414.00 40024164	1766.00 40030164	1774.00 40036164	5795.00 40042164	7815.00 40048164
C Cover (Slide)	1147.00 41020162	1200.00 41021162	1483.00 41024162	1675.00 41030162	2104.00 41036162	6171.00 41042162	6688.00 41048162
D Arch	306.00 44020162	337.00 44021162	380.00 44024162	601.00 44030162	903.00 44036162	1272.00 44042162	1366.00 44048162
E Right Wedge	78.00 71107350202	78.00 71107350202	98.00 71107280202	98.00 71107280202	101.00 71107000202	111.00 71110650202	111.00 71110650202
F Left Wedge	78.00 71107350102	78.00 71107350102	98.00 71107280102	98.00 7110728102	101.00 71107000102	111.00 71110650102	111.00 71110650102
Top Rail - Painted	246.00 47620040	250.00 47621040	264.00 47624040	290.00 47630040	321.00 47636040	359.00 47642040	384.00 47648040
Top Rail - Galvanized	241.00 47620041	245.00 47621041	314.00 47624041	285.00 47630041	314.00 47636041	351.00 47642041	376.00 47648041
Left Guide Rails - Galvanized (Price per Foot)	71.00	71.00	71.00	83.00	83.00	98.00	98.00
Right Guide Rails - Galvanized (Price per Foot)	71.00	71.00	71.00	83.00	83.00	98.00	98.00
G Thrust Collar / Lift Collar	30.00 48000015	30.00 48000015	30.00 48000015	75.00 48000020	75.00 48000020	110.00 48000026	110.00 48000026
H Collar Bolts w/ Nut (ea.)	8.00 2049	8.00 2049	8.00 2049	10.00 2390	10.00 2390	10.00 2390	10.00 2390
I Bronze Lift Nut	339.00	339.00	339.00	598.00	598.00	598.00	598.00
3 TPI - Right Hand	484154311	484154311	484154311				
4 TPI - Right Hand	484154312	484154312	484154312	4842054161	4842054161	4842054161	4842054161
4 TPI - Left Hand	484154313	484154313	484154313	4842054151	4842054151	4842054151	4842054151
J Handwheel	112.00 49515181	112.00 49515181	112.00 49515181	185.00 49518250	185.00 49518250	199.00 49524243	199.00 49524243
Arch Bolt	20.00 1176	20.00 2370	20.00 2370	20.00 1853	20.00 2074	25.00 2075	25.00 2075
Screw Bolt	20.00 2051	20.00 2051	20.00 2064	22.00 2073	22.00 2073	22.00 2073	22.00 2073
K Wedge Bolts (ea.)	20.00 2054	20.00 2054	20.00 2054	22.00 2069	22.00 2069	26.00 2011	26.00 2011
L Frame Bolts (ea.)	8.00 2049	8.00 2049	8.00 2049	8.00 2049	8.00 2049	10.00 2063	10.00 2063
UHMW Washers (includes nut and washer) (ea.) (for 42" & 48" part is the T-2 bearing)	7.00 71024593	7.00 71024593	7.00 71024593	7.00 71024594	7.00 71024594	167.00 84501037	167.00 84501037



FC-10 COMBINATION CANAL & DRAINAGE GATE



FC-10

FC-10

The FC-10 combines a C-10 canal gate and a F-10 drainage flap gate in a single unit. It allows drainage outflow when the unit is closed. When opened, water can backflow into the canal or pipe. See C-10 ordering details for options.

GATE SIZE	"H" FRAME HEIGHT (Minimum)	WEIGHT (LBS.)	MATERIAL	FLAT BACK ¹	SPIGOT BACK ¹ (For CMP)	PRICE PER ADD'L FOOT
18"	48"	220	GALV	4197.00 FC10F-18-48H-GALV	4288.00 FC10S-18-48H-GALV	POA
						11 LBS.
24"	60"	303	GALV	5572.00 FC10F-24-60H-GALV	5595.00 FC10S-24-60H-GALV	POA
						11 LBS.
30"	72"	520	GALV	7697.00 FC10F-30-72H-GALV	7858.00 FC10S-30-72H-GALV	POA
						18 LBS.
36"	84"	655	GALV	11217.00 FC10F-36-84H-GALV	11316.00 FC10S-36-84H-GALV	POA
						21 LBS.
42"	96"	885	GALV	19530.00 FC10F-42-96H-GALV	19633.00 FC10S-42-96H-GALV	POA
						30 LBS.
48"	120"	1,150	GALV	27687.00 FC10F-48-120H-GALV	27851.00 FC10S-48-120H-GALV	POA
						30 LBS.
60"	144"	2,929	GALV	37995.00 FC10F-60-144H-GALV	38236.00 FC10S-60-144H-GALV	POA
						36 LBS.

Notes: ¹ Price includes: Self-Contained Frame, Brass Lift Nut, Handwheel Lift, Galvanized Fasteners and Lift Arms, and Standard Paint

See Model F-10 Parts List for special links, bolts, and bushings

See Model C-10 Parts List for Anchor Bolts

SSC-10 SERIES

STAINLESS STEEL CANAL GATES – CIRCULAR OPENING

Built for Superior Performance

- Stainless steel major components for optimum corrosion resistance
- Best-in-class design and construction
- Outstanding longevity for reduced maintenance
- Environmentally friendly
- Computer analyzed for stress and deflection using finite element analysis
- Maximum seat head 10', not for use with unseating head.

Waterman Exclusive Benefits

- Tight closure with tapered wedge seating
- Low-effort, low friction opening
- Nearly drip-tight performance

Materials and Specifications

- Rugged and easily replaceable J-bulb seal
- UHMW polyethylene guide inserts
- 304 Stainless steel construction, 316 stainless steel optional
- Stainless steel stem



GATE SIZE	"H" FRAME HEIGHT (Minimum)	MAXIMUM HEAD (Feet)	LIFT	FLAT BACK	SPIGOT BACK	FLANGE BACK 125# ANSI	ADD'L RAIL (Per Foot)	STEM COVER (Option)
12"	27"	10'	Type 1(s)-10	5138.00 SSC10F-12-27H	5576.00 SSC10S-12-27H	5623.00 SSC10FLG-12-27H	189.00	495.00
15"	32"	10'	Type 1(s)-10	5576.00 SSC10F-15-32H	6030.00 SSC10S-15-32H	6087.00 SSC10FLG-15-32H	191.00	506.00
18"	36"	10'	Type 1(m)-15	5746.00 SSC10F-18-36H	6219.00 SSC10S-18-36H	6288.00 SSC10FLG-18-36H	229.00	554.00
24"	46"	10'	Type 2SN-15	6782.00 SSC10F-24-46H	7732.00 SSC10S-24-46H	7933.00 SSC10FLG-24-46H	234.00	579.00
30"	59"	10'	Type 2N-24	7685.00 SSC10F-30-59H	9156.00 SSC10S-30-59H	8978.00 SSC10FLG-30-59H	234.00	648.00
36"	68"	10'	3R4-2:1	8776.00 SSC10F-36-68H	9833.00 SSC10S-36-68H	10263.00 SSC10FLG-36-68H	235.00	675.00
42"	77"	10'	3R4-2:1	9776.00 SSC10F-42-77H	11296.00 SSC10S-42-77H	12361.00 SSC10FLG-42-77H	238.00	703.00
48"	83"	10'	3R4-2:1	11130.00 SSC10F-48-83H	12719.00 SSC10S-48-83H	14024.00 SSC10FLG-48-83H	282.00	728.00

Notes: SSC-10 Canal Gates include Self-Contained Frame, Stem, and Lift

Gate material is 304 stainless, 316 stainless optional - Call for Quote

Specify Corrugated Metal, Concrete, PVC type, or HDPE when ordering adapter - Interior pipe diameter required

Flange Back is compatible with ANSI 125#

Special diameters available

T304SS Anchor Bolts available

Custom sizes available on request

SSC-10, NOT SSC-31

AC-31 ALUMINUM CANAL GATE

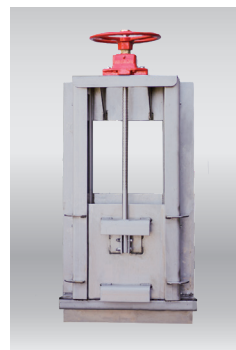
AC-31 ALUMINUM GATES

GATE SIZE	"H" FRAME HEIGHT (Minimum)	MAXIMUM HEAD SEATING/UNSEATING (Feet)	STANDARD LIFT	SPIGOT BACK	FLAT BACK	FLANGE BACK 125# ANSI	ADD'L RAIL (Per Foot)
8"	21"	30'/20'	Type 1(m)-12	6686.00 AC31S-08-21H	7193.00 AC31F-08-21H	7211.00 AC31FLG-08-21H	219.00
10"	24"	30'/20'	Type 1(m)-12	6740.00 AC31S-10-24H	7257.00 AC31F-10-24H	7284.00 AC31FLG-10-24H	219.00
12"	27"	30'/20'	Type 1(m)-12	6778.00 AC31S-12-27	7300.00 AC31F-12-27H	7326.00 AC31FLG-12-27H	219.00
14"	30"	30'/20'	Type 1(m)-12	6841.00 AC31S-14-30H	7369.00 AC31F-14-30H	7423.00 AC31FLG-14-30H	219.00
15"	32"	30'/20'	Type 1(m)-12	7184.00 AC31S-15-32	7714.00 AC31F-15-32H	7769.00 AC31FLG-15-32H	219.00
16"	34"	30'/20'	Type 1(m)-12	7197.00 AC31S-16-34H	7728.00 AC31F-16-34H	7798.00 AC31FLG-16-34H	219.00
18"	36"	30'/20'	Type 2SN-12	7266.00 AC31S-18-36H	7826.00 AC31F-18-36H	7895.00 AC31FLG-18-36H	228.00
20"	40"	30'/20'	Type 2SN-15	7289.00 AC31S-20-40H	8293.00 AC31F-20-40H	8377.00 AC31FLG-20-40H	256.00
21"	42"	30'/20'	Type 2SN-15	7316.00 AC31S-21-42H	8322.00 AC31F-21-42H	8388.00 AC31FLG-21-42H	256.00
24"	46"	30'/20'	Type 2-24	7904.00 AC31S-46-46H	8959.00 AC31F-46-46H	9147.00 AC31FLG-46-46H	260.00
30"	59"	30'/20'	3R4-2:1	9111.00 AC31S-30-59H	10203.00 AC31F-30-59H	10475.00 AC31FLG-30-59H	260.00
36"	68"	30'/20'	3R4-2:1	1039.00 AC31S-36-68H	11373.00 AC31F-36-68H	11769.00 AC31FLG-36-68H	260.00
42"	77"	30'/20'	3R4-2:1	11749.00 AC31S-42-77H	13379.00 AC31F-42-77H	14347.00 AC31FLG-42-77H	260.00
48"	87"	15'/15'	3R4-2:1	12985.00 AC31S-48-87H	14665.00 AC31F-48-87H	15842.00 AC31FLG-48-87H	300.00
54"	95"	15'/15'	3R4-2:1	14039.00 AC31S-54-95H	16107.00 AC31F-54-95H	17425.00 AC31FLG-54-95H	300.00
60"	108"	15'/15'	3R5-4:1	15658.00 AC31S-60-108H	17800.00 AC31F-60-108H	19377.00 AC31FLG-60-108H	300.00
66"	117"	10'/10'	3R5-4:1	17910.00 AC31S-66-117H	20129.00 AC31F-66-117H	22021.00 AC31FLG-66-117H	322.00
72"	126"	10'/10'	3R5-4:1	19868.00 AC31S-72-126H	22388.00 AC31F-72-126H	25622.00 AC31FLG-72-126H	322.00
84"	147"	10'/10'	3R7-12:1	26078.00 AC31S-84-147H	29058.00 AC31F-84-147H	32979.00 AC31FLG-84-147H	420.00

Notes: AC-31 Canal Gates include Self-Contained Frame, Stem, and Lift. Minimum height models shown, additional rail heights available.

Specify Corrugated Metal, Concrete, PVC type, or HDPE when requesting spigot mounting to pipe. Furnish interior pipe diameter.

Optional rising stem covers and non-rising stem available. Can be adaptable to motor operators; contact factory for details.



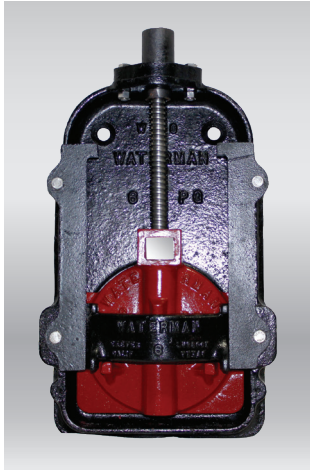
AC-31-F



AC-31-Type 6 for HDPE

P-30 PRESSURE GATE

P-30 PRESSURE GATES



P-30

PRESSURE SLIDE GATES--P-30 "RED TOP" SERIES

Used for medium duty water control in small reservoirs, distribution boxes, ponding areas and pumping stations. Not for use with continuous throttling. Holds pressure in both directions. Center-point, wedge-action closure. Typically mounted to head walls or pipe stands. Flange back models (P-30-FF) for direct installation on pipe flanges with 125# ANSI straddle center drilling standard.

KEY FEATURES:

- Guide rails on 6"-14" are cast iron. Guide rails on 16" and larger are stainless steel.
- Precision machined iron seating surface (bronze optional).
- For 60 foot seating (face) pressure and 10 foot unseating (back) pressure
- Non-Rising 304SS stem standard. All sizes supplied with a handwheel operator standard. Optionally, 2" square operating nut can be furnished on special request.

GATE SIZE	P-30-F FLATBACK / WALL MOUNT			P-30FLG FLANGEBACK ANSI 125# DRILLING		
	WT. (LBS.)	IRON SEATS	BRONZE SEATS	WT. (LBS.)	IRON SEATS	BRONZE SEATS
6"	105	2004.00 P30F-06	2469.00 P30F-06-BNZ	155	2289.00 P30FLG-06	2755.00 P30FLG-06-BNZ
8"	120	2361.00 P30F-08	2956.00 P30F-08-BNZ	170	2749.00 P30FLG-08	3344.00 P30FLG-08-BNZ
10"	165	3157.00 P30F-10	3779.00 P30F-10-BNZ	215	3524.00 P30FLG-10	4147.00 P30FLG-10-BNZ
12"	185	3460.00 P30F-12	4111.00 P30F-12-BNZ	235	3866.00 P30FLG-12	4517.00 P30FLG-12-BNZ
14"	295	3846.00 P30F-14	4640.00 P30F-14-BNZ	345	4368.00 P30FLG-14	2755.00 P30FLG-06-BNZ
16"	400	4112.00 P30F-16	4927.00 P30F-16-BNZ	450	4742.00 P30FLG-16	5558.00 P30FLG-16-BNZ
18"	475	4571.00 P30F-18	5640.00 P30F-18-BNZ	525	5170.00 P30FLG-18	6239.00 P30FLG-18-BNZ
20"	525	4961.00 P30F-20	6286.00 P30F-20-BNZ	575	5738.00 P30FLG-20	7064.00 P30FLG-20-BNZ
24"	590	7060.00 P30F-24	8471.00 P30F-24-BNZ	640	7768.00 P30FLG-24	9180.00 P30FLG-24-BNZ

Notes: 6" through 14" valves come with iron rails - 16" and above come standard with stainless steel rail unless otherwise noted

Specify type and size of pipe when ordering adaption

304ss stems are standard

PART	GATE SIZE								
	6"	8"	10"	12"	14"	16"	18"	20"	24"
Flangeback Frame - Iron Seats	582.00 40006134	596.00 40008134	720.00 40010134	800.00 40012134	1173.00 40014134	1546.00 40016134	1604.00 40018134	1951.00 40020134	2815.00 40024134
Flange back Frame - Bronze Seats	888.00 40206134	941.00 40208134	1071.00 40210134	1196.00 40212134	1713.00 40214134	1904.00 40216134	2234.00 40218134	2836.00 40220134	3514.00 40224134
Headpiece (Yoke)	N/A	N/A	N/A	N/A	N/A	213.00 47616134	337.00 47618134	480.00 47620134	500.00 47624134
Cover - Iron Seats	272.00 41006050	287.00 41008050	307.00 41010050	315.00 41012050	347.00 41014050	363.00 41016050	489.00 41018050	818.00 41020050	1395.00 41024050
Cover - Bronze Seats	396.00 41406051	420.00 41408051	424.00 41410051	473.00 41412051	720.00 41414051	855.00 41416051	1159.00 41418051	1735.00 41420051	2625.00 41424051
Arch	97.00 71101890002	106.00 71101920002	124.00 71102000002	237.00 71102060002	249.00 71102120002	263.00 71102180002	288.00 71102250002	306.00 71102280002	875.00 71111010002
Stainless Screw w/ Head Extension Bracket	164.00 42406134	165.00 42408134	171.00 42410134	178.80 42412134	192.00 42414134	256.00 42416134	276.00 42418134	385.00 42420134	467.00 42424134
Brass Screw Nut (Thrust Nut, Single Lead)	102.00 42106102	102.00 42106102	102.00 42106102	102.00 42106102	102.00 42106102	194.00 42116102	194.00 42116102	217.00 42120102	408.00 42124102
Screw Head w/ Pin	29.00 42306134	29.00 42306134	29.00 42306134	29.00 42306134	29.00 42306134	37.00 103588	37.00 103588	43.00 42320134	186.00 42324134
Left Rail - Iron	39.00 47406134	39.00 47408134	39.00 47410134	46.00 47412134	78.00 47414134	N/A	N/A	N/A	N/A
Right Rail - Iron	39.00 47506134	39.00 47508134	39.00 47510134	46.00 47512134	78.00 47514134	N/A	N/A	N/A	N/A
Left Rail - Steel	N/A	N/A	N/A	N/A	N/A	76.00 47416234	86.00 47418234	107.00 47420234	138.00 47424234
Right Rail - Steel	N/A	N/A	N/A	N/A	N/A	76.00 47516234	86.00 47518234	107.00 47520234	138.00 47524234
Right Rail - Stainless Steel	N/A	N/A	N/A	N/A	N/A	113.00 47416334	141.00 47418334	165.00 47420334	217.00 47424334
Right Rail - Stainless Steel	N/A	N/A	N/A	N/A	N/A	113.00 47516334	141.00 47518334	165.00 47520334	217.00 47524334
Thrust Collar	114.00 48006134	114.00 48006134	114.00 48006134	114.00 48006134	114.00 48006134	184.00 48014134	184.00 48014134	184.00 48020134	393.00 48024134
Collar Bolts	5.00 2262	5.00 2262	5.00 2262	5.00 2262	8.00 2300	8.00 2300	8.00 2300	10.00 2306	10.00 2306
Handwheel	164.00 49512061	164.00 49512061	164.00 49512061	164.00 49512061	164.00 49512061	172.00 49512078	172.00 49512078	POA 49515088	212.00 49518126
Assembly Bolts (ea.)	6.00 1235	6.00 1235	6.00 1235	6.00 1235	6.00 1235	9.00 1231	9.00 1231	9.00 1231	9.00 1231
Set Screws (ea.)	5.00 2860	5.00 2860	5.00 2860	5.00 2860	5.00 2860	5.00 2860	5.00 2860	5.00 2860	5.00 2860

H-30 LINE GATES

H-30 LINE GATES



H-30



H-30 with V-notch opening

LINE GATES—H-30 "RED TOP" SERIES

Our line gates are for direct installation into pipelines and are designed for longevity. The heavy-cast iron construction is complimented by a non-rising stainless steel screw and bronze nut with double lead Acme threads. A cast iron packing gland with a bronze packing nut which eliminates “freezing” due to rust or corrosion.

KEY FEATURES:

- Precision-machined iron seating surface (bronze seats optional)
- Each gate is hydrostatically tested
- 60 feet maximum seating (face) pressure (PSI)
- 10 feet maximum unseating (back) pressure (PSI)
- Non-rising stainless steel stem, with bronze nut and precision machined double lead Acme threads for faster opening and closing
- Bronze packing gland nut and lift nut
- Hand wheel standard; 2" square operating nut optional

GATE SIZE	PRICE WITH CAST IRON SEATS ¹				
	HUB ENDS (CONCRETE T1)	SPIGOTS FOR PVC T-4 SOLVENT CEMENT CONNECTION	CIP / IPS HUB ²	FLANGED (125 LB. ASA)	ADD PIP INSERT
6"	N/A	1329.00 H30-06-T4 75 LBS.	1390.00 H30-06-IPS 74 LBS.	1725.00 H30-06-FF 84 LBS.	20.86 1800418
8"	1424.00 H30-08-T1 76 LBS.	1445.00 H30-08-T4 94 LBS.	1753.00 H30-08-IPS 92 LBS.	1861.00 H30-08-FF 104 LBS.	20.86 1800408
10"	1571.00 H30-10-T1 87 LBS.	1716.00 H30-10-T4 120 LBS.	2088.00 H30-10-IPS 117 LBS.	2287.00 H30-10-FF 131 LBS.	26.42 1800412
12"	1845.00 H30-12-T1 143 LBS.	2037.00 H30-12-T4 169 LBS.	2382.00 H30-12-IPS 161 LBS.	2714.00 H30-12-FF 182 LBS.	26.42 1800409
14"	2220.00 H30-14-T1 182 LBS.	N/A	N/A	3363.00 H30-14-FF 200 LBS.	N/A
15" x 14" (15" Pipe Size)	N/A	2449.00 H30-1514-T4 200 LBS.	3144.00 H30-1514-PIP 194 LBS.	N/A	N/A
16"	2892.00 H30-16-T1 245 LBS.	N/A	N/A	4037.00 H30-16-FF 390 LBS.	N/A
18"	3630.00 H30-18-T1 305 LBS.	4545.00 H30-18-T4-63# for 63lb PIP / H30-18-T4-80# for 80lb PIP no adapter needed 325 LBS.	N/A	5126.00 H30-18-FF 610 LBS.	N/A
20"	5789.00 H30-20-T1 462 LBS.	N/A	N/A	6808.00 H30-20-FF 960 LBS.	N/A
20" x 21"* (21" Pipe Size)	N/A	5789.00* H30-2021-T4 480 LBS.	N/A	N/A	N/A
24"	11244.00 H30-24-T1 883 LBS.	12992.00 H30-24-T4 931 LBS.	N/A	14690.00 H30-24-FF 998 LBS.	N/A
30"	23938.00 H30-30-T1 2,440 LBS.	N/A	N/A	26082.00 H30-30-FF 2,550 LBS.	N/A
36"	N/A	N/A	N/A	38109.00 H30-36-FF 4290 LBS.	N/A

Notes: ¹ Bronze Seats available, please call for quote. ² Add PIP Inserts for PIP Pipe when placing order, see additional cost column
Vee Notch (Metering) HV-30 and Double Disc (HD-30) lines available by special order. Call for quote
*On 20" x 21" for 80# or 100# PIP NO ADAPTER REQUIRED.

PART	GATE SIZE						
	6"	8"	10"	12"	14"	15" x 14"	16"
Bonnet	199.00 42006102	218.00 42008102	235.00 42010102	277.00 42012102	340.00 42014102	340.00 42014102	520.00 42016102
Bonnet Gasket	16.00 43506102	33.00 43508102	33.00 43510102	33.00 43512102	53.00 43514102	53.00 43514102	56.00 43516102
Bonnet Bolts (Set of bolts and nuts)	55.00 80803150	57.00 80804150	57.00 80804150	57.00 80805150	57.00 80805150	57.00 80805150	80.00 80806150
Arch	97.00 71101890002	106.00 71101920002	124.00 71102000002	237.00 71102060002	249.00 71102120002	249.00 71102120002	263.00 71102180002
Stainless Screw (Stem) w/ Collar Double Lead	198.00 42706103	206.00 42708103	227.00 42710103	237.00 42712103	380.00 42714103	380.00 42714103	320.00 42716103
Brass Screw Nut (Thrust Nut) Double Lead	38.00 42106103	38.00 42106103	38.00 42106103	38.00 42106103	38.00 42106103	38.00 42106103	90.00 42116103
Body (Cast Iron w/ Hub Ends)	648.00 40506020	677.00 40508020	862.00 40510020	987.00 40512020	1237.00 40514020	N/A	1874.00 40516020
Body w/ Type 4 Spigots1 (Iron Seats))	793.00 40506060	976.00 40508060	1165.00 40510060	1456.00 40512060	N/A	1840.00 40515060	2335.00 40516060
Body w/ Flanged Ends (Iron Seats)	1268.00 40506080	1268.00 40508080	1559.00 40510080	2217.00 40512080	2470.00 40514080	N/A	3497.00 40516080
Body w/ CIP Hubs (Iron Seats)	914.00 40506040	951.00 40508040	1073.00 40510040	1337.00 40512040	N/A	N/A	N/A
Body w/ CIP Hubs (Brass Seats)	1313.00 40406040	1417.00 40408040	1606.00 40410040	1982.00 40412040	N/A	N/A	N/A
Packing Gland Assembly (Includes body, bolts, nuts, packing, and gasket)	182.00 64506102	182.00 64506102	182.00 64506102	205.00 64512102	205.00 64512102	205.00 64512102	299.00 64516102
Packing Gland Body	45.00 64806102	45.00 64806102	45.00 64806102	45.00 64812102	45.00 64812102	45.00 64812102	70.00 64816102
Packing Gland Nut	65.00 64606102	65.00 64606102	65.00 64606102	65.00 64606102	65.00 64606102	65.00 64606102	65.00 64616102
Packing Gland Packing (3 pcs. per package)	24.00 43408040	24.00 43408040	24.00 43408040	24.00 43408040	24.00 43408040	24.00 43408040	24.00 43408040
Packing Gland Gasket	9.00 43506112	9.00 43506112	9.00 43506112	17.00 43512112	17.00 43512112	17.00 43512112	17.00 43512112
Packing Gland Bolts	7.00 2277	7.00 2277	7.00 2277	7.00 2277	7.00 2277	7.00 2277	7.00 2277
Handwheel	139.00 49512060	139.00 49512060	139.00 49512060	139.00 49512060	139.00 49512060	139.00 49512060	148.00 49512076
Handwheel w/Spinner	164.00 49512061	164.00 49512061	164.00 49512061	164.00 49512061	164.00 49512061	164.00 49512061	172.00 49512078
Set Screws (ea.)	7.00 1261	7.00 1261	7.00 1261	7.00 1261	7.00 1261	7.00 1261	7.00 1261
Connector Stem Extension (Coupling)	46.00 55500060	46.00 55500060	46.00 55500060	46.00 55500060	46.00 55500060	46.00 55500060	51.00 55500075
Square Stock for Handle (per ft.)	13.00 90058010	13.00 90058010	13.00 90058010	13.00 90058010	13.00 90058010	13.00 90058010	17.00 90034010
Cover Cast Iron	272.00 41006050	287.00 41008050	307.00 41010050	315.00 41012050	347.00 41014050	347.00 41014050	363.00 41016050
Cover Perm. Bronze	CALL FOR QUOTE 41406051	CALL FOR QUOTE 41408051	CALL FOR QUOTE 41410051	CALL FOR QUOTE 41412051	CALL FOR QUOTE 41414051	CALL FOR QUOTE 41414051	CALL FOR QUOTE 41416051
2" SQ OP Nut (5/8" Shaft for 6" to 14" Valves , 3/4" for 16")	96.00 49202060	96.00 49202060	96.00 49202060	96.00 49202060	96.00 49202060	96.00 49202060	96.00 49203075

Notes: 1 Type 4 is designed for Low Head pipe.

 = Recommended Rebuild Parts

H-30 LINE GATES PARTS

PART	GATE SIZE					
	18"	20"	20" x 21"	24"	30"	36"
Bonnet	497.00 42018102	1138.00 42020102	1138.00 42020102	2251.00 42024102	4068.00 42030102	8261.00 42036102
Bonnet Gasket	61.00 43518102	134.00 43520102	134.00 43520102	148.00 43524102	278.00 43530102	304.00 43536102
Bonnet Bolts (Set of bolts and nuts)	80.00 80806150	80.00 80807150	80.00 80807150	80.00 80808150	80.00 80809150	80.00 80809150
Arch	288.00 71102250002	306.00 71102280002	306.00 71102280002	875.00 71111010002	1287.00 71114740002	1629.00 71119000002
Stainless Screw (Stem) w/ Collar Double Lead	355.00 42718103	615.00 42720103	439.00 42720103	615.00 42720103	2022.00 42730103	2340.00 42736103
Brass Screw Nut (Thrust Nut) Double Lead (single lead 24" and larger)	90.00 42116103	221.00 42120103	221.00 42120103	675.00 42124102	675.00 42124102	675.00 42124102
Body Cast Iron w/ Hub Ends	2215.00 40518020	2509.00 40520020	Call For Quote	5516.00 40524020	10526.00 40530020	Call For Quote
Body w/ Type 4 Spigots1 (Iron Seats)	3183.00 40518060	2669.00 40520060	Call For Quote	N/A	N/A	N/A
Body w/ Flanged Ends (Iron Seats)	4167.00 40518080	5565.00 40520080	Call For Quote	9072.00 40524080	17696.00 40530080	24751.00 40536080
Packing Gland Assembly (Includes body, nuts, bolts, packing, and gasket)	299.00 64516102	299.00 64520102	299.00 64520102	374.00 64524102	374.00 64524102	374.00 64536102
Packing Gland Body	70.00 64816102	118.00 64820102	118.00 64820102	200.00 64824102	317.00 64824102	317.00 64836102
Packing Gland Nut	156.00 64616102	301.00 64620102	301.00 64620102	N/A	N/A	N/A
Packing Gland Packing (3 pcs. per package)	24.00 43408040	24.00 43408040	24.00 43408040	70.00 43415050	70.00 43415050	70.00 43415050
Packing Gland Gasket	17.00 43512112	87.00 43520112	87.00 43520112	87.00 43524112	87.00 43524112	87.00 43536112
Packing Gland Bolts	7.00 2277	8.00 2041	8.00 2041	9.00 2048	9.00 2048	9.00 2048
Handwheel	148.00 49512076	185.00 49518131	185.00 49518131	185.00 49518131	269.00 49524132	340.00 49530126
Handwheel w/ Spinner	172.00 49512078	254.00 49518132	254.00 49518132	N/A	N/A	N/A
Set Screws (ea.)	7.00 1261	7.00 1261	7.00 1261	7.00 1261	7.00 1261	7.00 1261
Connector Stem Extension (Coupling)	51.00 55500075	104.00 55500080	104.00 55500080	120.00 55500125	120.00 55500125	120.00 55500125
Square Stock for Handle (per ft.)	17.00 90034010	18.00 90078010	18.00 90078010	64.00 211000008	64.00 211000008	64.00 211000008
Cover - Cast Iron	489.00 41018050	818.00 41020050	818.00 41020050	1395.00 41024050	2844.00 41030050	7643.00 41036050
Cover - Perm. Bronze	CALL FOR QUOTE 41418051	CALL FOR QUOTE 41420051	CALL FOR QUOTE 41420051	CALL FOR QUOTE 41424051	CALL FOR QUOTE 41430051	CALL FOR QUOTE 41436051
2" SQ OP Nut (3/4" sq shaft for 18", 7/8" square for 20")	96.00 49203075	96.00 49202875	96.00 49202875	96.00 49202125	96.00 49202125	96.00 49202125
Spinner Knob Assembly	106.00 49500100	106.00 49500100	106.00 49500100	106.00 49500100	106.00 49500100	106.00 49500100

Recommended Rebuild Parts

WBV WAFER-STYLE BUTTERFLY VALVE



Lever Operated

Model	Size	List Price
WBV-L-02.5	2.5"	128.00
WBV-L-03	3"	158.00
WBV-L-04	4"	192.00
WBV-L-06	6"	258.00
WBV-L-08	8"	375.00



Gear Operated with Handwheel

Model	Size	List Price
WBV-G-04	4"	265.00
WBV-G-06	6"	351.00
WBV-G-08	8"	488.00
WBV-G-10	10"	630.00
WBV-G-12	12"	872.00
WBV-G-14	14"	1264.00
WBV-G-16	16"	1695.00
WBV-G-18	18"	2529.00
WBV-G-20	20"	3473.00
WBV-G-24	24"	5304.00

Extensions for 4" to 6" Valve		
Model	Length	List Price
EXT24S	24"	POA
EXT36S	36"	POA
EXT48S	48"	POA
EXT60S	60"	POA
EXT72S	72"	POA

Extensions for 8" to 14" Valve		
Model	Length	List Price
EXT24M	24"	POA
EXT36M	36"	POA
EXT48M	48"	POA
EXT60M	60"	POA
EXT72M	72"	POA

Extensions for 16" to 20" Valve		
Model	Length	List Price
EXT24L	24"	POA
EXT36L	36"	POA
EXT48L	48"	POA
EXT60L	60"	POA
EXT72L	72"	POA

Extensions for 24" Valve		
Model	Length	List Price
EXT24X	24"	POA
EXT36X	36"	POA
EXT48X	48"	POA
EXT60X	60"	POA
EXT72X	72"	POA

Note: POA = Price on Application.

WBV BUTTERFLY VALVES

F-10 CAST IRON FLAP GATE



F-10

CAST IRON FLAP GATES—F-10 "RED TOP" SERIES

Flap gates permit the free outflow of water from a pipe or structure while preventing and sealing against backflow. They are applied in reservoirs, tidal basins, ponding basins, waste lines, pump stands and storm drain systems. It is rated for a seating head of up to 10 feet.

KEY FEATURES:

- Frame and cover of heavy-duty cast iron.
- Galvanized steel angle links balance pivoted on bronze bushings.
- Built-in "Safety Bar" prevents sticking.
- 5 degree seat on sizes to 24", 2.5 degree seat on larger sizes allows for closure and compensates for piping irregularities.

GATE SIZE	FOR WALL MOUNT		FOR CORRUGATED METAL PIPE		FOR CONCRETE PIPE		HDPE ADAPTER, ADDS TO FLATBACK
	WT. (LBS.)	FLATBACK	WT. (LBS.)	CMP SPIGOTBACK	WT. (LBS.)	FLATBACK W/ TAPER SETTING COLLAR	
4"	9	397.00 F10F-04	18	544.00 F10S-04		N/A	N/A
6"	11	485.00 F10F-06	21	551.00 F10S-06	18	604.00 F10F-06-TSC	297.00 15006100
8"	23	518.00 F10F-08	32	578.00 F10S-08	27	772.00 F10F-08-TSC	369.00 15008100
10"	43	609.00 F10F-10	56	603.00 F10S-10	52	907.00 F10F-10-TSC	393.00 15010100
12"	50	654.00 F10F-12	64	702.00 F10S-12	57	834.00 F10F-12-TSC	405.00 15012100
14"	55	907.00 F10F-14	69	924.00 F10S-14	65	1118.00 F10F-14-TSC	411.00 15014100
15"	59	913.00 F10F-15	75	931.00 F10S-15	69	1103.00 F10F-15-TSC	424.00 15015100
16"	75	1329.00 F10F-16	92	1390.00 F10S-16	88	1604.00 F10F-16-TSC	424.00 15016100
18"	93	1431.00 F10F-18	106	1476.00 F10S-18	100	1631.00 F10F-18-TSC	424.00 15018100
20"	110	1508.00 F10F-20	129	1715.00 F10S-20	122	1776.00 F10F-20-TSC	492.00 15020100
21"	115	1527.00 F10F-21	140	1842.00 F10S-21	130	2174.00 F10F-21-TSC	665.00 15021100
24"	155	1895.00 F10F-24	183	2127.00 F10S-24	170	2362.00 F10F-24-TSC	725.00 15024100
30"	300	2871.00 F10F-30	338	3219.00 F10S-30	325	3484.00 F10F-30-TSC	1118.00 15030100
36"	430	3323.00 F10F-36	490	3743.00 F10S-36	465	5452.00 F10F-36-TSC	1340.00 15036100
42"	565	6978.00 F10F-42	650	7389.00 F10S-42	600	8091.00 F10F-42-TSC	1401.00 15042100
48"	720	8093.00 F10F-48	800	8717.00 F10S-48	760	9118.00 F10F-48-TSC	1932.00 15048100
54"	1,135	11759.00 F10F-54	1,129	12317.00 F10S-54	1,200	N/A	Call for Quote 47854100
60"	1,900	12519.00 F10F-60	2,100	14007.00 F10S-60	2,010	N/A	Call for Quote 47860100
72"	2,480	18480.00 F10F-72	2,680	21132.00 F10S-72	2,580	N/A	Call for Quote 47872100

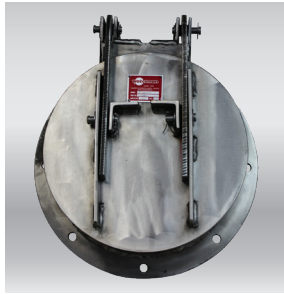
Notes: HDPE adapters can be made to fit most pipes-provide pipe specifications when placing order.

F-10 FLAP GATE

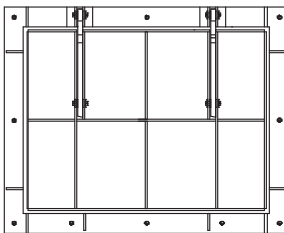
GATE SIZE	PARTS							
	FRAME - FLATBACK	FRAME - SPIGOT-BACK	COVER (FLAP)	HINGE LINK - LEFT (GALV)	HINGE LINK - RIGHT (GALV)	BUSHING - BRONZE	GALV HINGE BOLTS & NUT (EA.)	TAPER SETTING COLLAR
4"	313.00 40004074	318.00 40004076	240.00 41004074	30.00 45304075	30.00 45404075	51.00 83504162	6.00 1263	N/A
6"	314.00 40006074	320.00 40006076	244.00 41006074	30.00 45306073	30.00 45406073	51.00 83504162	6.00 1263	235.00 47806154
8"	335.00 40008074	341.00 40008076	262.00 41008074	35.00 45308075	35.00 45408075	51.00 83504162	6.00 1263	244.00 47808154
10"	346.00 40010074	419.00 40010076	345.00 41010074	38.00 45310075	38.00 45410075	51.00 83504162	6.00 1263	252.00 47810154
12"	361.00 40012074	374.00 40012076	334.00 41012074	38.00 45312075	38.00 45412075	51.00 83504162	6.00 1263	257.00 47812154
14"	433.00 40014074	451.00 40014076	402.00 41014074	41.00 45314075	41.00 45414075	51.00 83504162	6.00 1263	266.00 47814154
15"	451.00 40015074	469.00 40015076	435.00 41015074	43.00 45315075	43.00 45415075	51.00 83504162	6.00 1263	272.00 47815154
16"	575.00 40016074	601.00 40016076	480.00 41016074	44.00 45316075	44.00 45416075	51.00 83504162	6.00 1263	277.00 47816154
18"	592.00 40018074	641.00 40018076	646.00 41018074	57.00 45318075	57.00 45418075	66.00 83507300	20.00 2064	391.00 47818154
20"	745.00 40020074	777.00 40020076	672.00 41020074	67.00 45320075	67.00 45420075	66.00 83507300	20.00 2064	402.00 47820154
21"	861.00 40021074	902.00 40021076	705.00 41021074	69.00 45321075	69.00 45421075	66.00 83507300	20.00 2064	410.00 47821154
24"	978.00 40024074	1010.00 40024076	1023.00 41024074	73.00 45324075	73.00 45424075	66.00 83507300	20.00 2064	423.00 47824154
30"	1509.00 40030074	1950.00 40030076	1491.00 41030074	126.00 45330075	126.00 45430075	82.00 83510425	22.00 2073	472.00 47830154
36"	1565.00 40036074	2211.00 40036076	1930.00 41036074	144.00 45336075	144.00 45436075	82.00 83510425	22.00 2073	509.00 47836154
42"	3334.00 40042074	4383.00 40042076	3877.00 41042074	159.00 45342075	159.00 45442075	114.00 83510600	22.00 2075	534.00 47842154
48"	3818.00 40048074	5486.00 40048076	5569.00 41048074	222.00 45348075	222.00 45448075	114.00 83510600	25.00 2075	598.00 47848154
54"	5126.00 40054074	7483.00 40054076	7126.00 41054074	444.00 45354075	444.00 45454075	182.00 83512662	54.00 2076	N/A
60"	7337.00 40060074	7861.00 40060076	7862.00 41060074	492.00 45360075	492.00 45460075	182.00 83512662	54.00 2076	N/A
72"	9163.00 40072074	11219.00 40072076	12774.00 41072074	541.00 45372075	541.00 45472075	182.00 83512662	54.00 2076	N/A



AF-41



SSF-41



ROUND FLAP GATES—AF-41 SERIES (ALUMINUM) SSF-41 SERIES (STAINLESS STEEL)

Our AF-41 and SSF-41 gates are inherently corrosion-resistant and rust-proof automatic drainage gates. They are commonly used with aluminum corrugated pipe, plastic or HDPE. Models are also available for flange and wall mounting. This design prevents electrolysis associated with cast iron gates to aluminum pipe connections. The rugged J-bulb neoprene adjustable seats provide excellent sealing against return flow. Part numbers for standard sizes are shown in the table. Pricing on application. Custom models available 96" and larger, call for quotation.

See price table on page 39

SQUARE FLAPGATES: AF-43 SERIES (ALUMINUM) SSF-43 SERIES (STAINLESS STEEL)

KEY FEATURES:

- Part numbers shown for standard sizes. Custom sizes on request.
- Seating Heads up to 10 feet (Can be custom Engineered for higher head pressures upon request)
- Neoprene Seat for Minimum Leakage

AF-43 & SSF-43 Fabricated Square Flap Gates - Standard "Stock" Sizes

Size	Wall Mount AF-43 (Aluminum)	Wall Mount SSF-43 (304 Stainless)	Wall Mount SSF-43 (316 Stainless)
12" X 12"	3961.00 AF43-12x12	4313.00 SSF43-12x12-304	4750.00 SSF43-12x12-316
18" X 18"	4194.00 AF43-18x18	4837.00 SSF43-18x18-304	5449.00 SSF43-18x18-316
24" X 24"	4455.00 AF43-24x24	5421.00 SSF43-24x24-304	6225.00 SSF43-24x24-316
30" X 30"	5278.00 AF43-30x30	6604.00 SSF43-30x30-304	7616.00 SSF43-30x30-316
36" X 36"	5796.00 AF43-36x36	8560.00 SSF43-36x36-304	9142.00 SSF43-36x36-316
42" X 42"	6210.00 AF43-42x42	9669.00 SSF43-42x42-304	10432.00 SSF43-42x42-316
48" X 48"	7293.00 AF43-48x48	11490.00 SSF43-48x48-304	12467.00 SSF43-48x48-316
54" X 54"	8483.00 AF43-54x54	13824.00 SSF43-54x54-304	15101.00 SSF43-54x54-316
60" X 60"	10584.00 AF43-60x60	17795.00 SSF43-60x60-304	19758.00 SSF43-60x60-316

Note: POA = Price on Application.

FABRICATED FLAP GATES

GATE SIZE	AF-41 ALUMINUM			SSF-41 304 STAINLESS STEEL			SSF-41 316 STAINLESS STEEL		
	SPIGOT BACK	FLAT BACK	FLANGE BACK	SPIGOT BACK	FLAT BACK	FLANGE BACK	SPIGOT BACK	FLAT BACK	FLANGE BACK
8"	3747.00 AF41S-08	4389.00 AF41F-08	4407.00 AF41FLG-08	4216.00 SSF41S-08-SS304	4950.00 SSF41F-08-SS304	4892.00 SSF41FLG-08-SS304	4343.00 SSF41S-08-SS316	5113.00 SSF41F-08-SS316	5342.00 SSF41FLG-08-SS316
10"	3825.00 AF41S-10	4485.00 AF41F-10	4515.00 AF41FLG-10	4442.00 SSF41S-10-SS304	5215.00 SSF41F-10-SS304	5244.00 SSF41FLG-10-SS304	4609.00 SSF41S-10-SS316	5426.00 SSF41F-10-SS316	5759.00 SSF41FLG-10-SS316
12"	3936.00 AF41S-12	4614.00 AF41F-12	4673.00 AF41FLG-12	4514.00 SSF41S-12-SS304	5329.00 SSF41F-12-SS304	5474.00 SSF41FLG-12-SS304	4744.00 SSF41S-12-SS316	5612.00 SSF41F-12-SS316	6126.00 SSF41FLG-12-SS316
14"	4043.00 AF41S-14	4740.00 AF41F-14	4806.00 AF41FLG-14	4818.00 SSF41S-14-SS304	5674.00 SSF41F-14-SS304	5865.00 SSF41FLG-14-SS304	5059.00 SSF41S-14-SS316	5978.00 SSF41F-14-SS316	6572.00 SSF41FLG-14-SS316
15"	4098.00 AF41S-15	4807.00 AF41F-15	4879.00 AF41FLG-15	4905.00 SSF41S-15-SS304	5787.00 SSF41F-15-SS304	6007.00 SSF41FLG-15-SS304	5162.00 SSF41S-15-SS316	6113.00 SSF41F-15-SS316	6751.00 SSF41FLG-15-SS316
16"	4156.00 AF41S-16	4880.00 AF41F-16	4969.00 AF41FLG-16	5000.00 SSF41S-16-SS304	5531.00 SSF41F-16-SS304	6217.00 SSF41FLG-16-SS304	5276.00 SSF41S-16-SS316	6257.00 SSF41F-16-SS316	7018.00 SSF41FLG-16-SS316
18"	4850.00 AF41S-18	5595.00 AF41F-18	5680.00 AF41FLG-18	5762.00 SSF41S-18-SS304	6720.00 SSF41F-18-SS304	7002.00 SSF41FLG-18-SS304	6073.00 SSF41S-18-SS316	7115.00 SSF41F-18-SS316	7889.00 SSF41FLG-18-SS316
20"	4955.00 AF41S-20	5722.00 AF41F-20	5832.00 AF41FLG-20	6159.00 SSF41S-20-SS304	7168.00 SSF41F-20-SS304	7569.00 SSF41FLG-20-SS304	6551.00 SSF41S-20-SS316	7656.00 SSF41F-20-SS316	8613.00 SSF41FLG-20-SS316
21"	5040.00 AF41S-21	5822.00 AF41F-21	5904.00 AF41FLG-21	6306.00 SSF41S-21-SS304	7346.00 SSF41F-21-SS304	7639.00 SSF41FLG-21-SS304	6732.00 SSF41S-21-SS316	7873.00 SSF41F-21-SS316	8701.00 SSF41FLG-21-SS316
24"	5234.00 AF41S-24	6165.00 AF41F-24	6411.00 AF41FLG-24	6995.00 SSF41S-24-SS304	8510.00 SSF41F-24-SS304	9347.00 SSF41FLG-24-SS304	7368.00 SSF41S-24-SS316	9109.00 SSF41F-24-SS316	10769.00 SSF41FLG-24-SS316
30"	5741.00 AF41S-30	6775.00 AF41F-30	7145.00 AF41FLG-30	8178.00 SSF41S-30-SS304	9982.00 SSF41F-30-SS304	11319.00 SSF41FLG-30-SS304	8970.00 SSF41S-30-SS316	11071.00 SSF41F-30-SS316	13490.00 SSF41FLG-30-SS316
36"	6706.00 AF41S-36	7856.00 AF41F-36	8421.00 AF41FLG-36	9657.00 SSF41S-36-SS304	11783.00 SSF41F-36-SS304	13883.00 SSF41FLG-36-SS304	10688.00 SSF41S-36-SS316	13191.00 SSF41F-36-SS316	13490.00 SSF41FLG-36-SS316
42"	7766.00 AF41S-42	8720.00 AF41F-42	9751.00 AF41FLG-42	12692.00 SSF41S-42-SS304	14248.00 SSF41F-42-SS304	16939.00 SSF41FLG-42-SS304	14610.00 SSF41S-42-SS316	16398.00 SSF41F-42-SS316	20880.00 SSF41FLG-42-SS316
48"	9775.00 AF41S-48	11156.00 AF41F-48	12023.00 AF41FLG-48	16592.00 SSF41S-48-SS304	18283.00 SSF41F-48-SS304	21472.00 SSF41FLG-48-SS304	19257.00 SSF41S-48-SS316	21214.00 SSF41F-48-SS316	26613.00 SSF41FLG-48-SS316
54"	11006.00 AF41S-54	12040.00 AF41F-54	13582.00 AF41FLG-54	19863.00 SSF41S-54-SS304	22243.00 SSF41F-54-SS304	25607.00 SSF41FLG-54-SS304	23429.00 SSF41S-54-SS316	26208.00 SSF41F-54-SS316	32135.00 SSF41FLG-54-SS316
60"	14444.00 AF41S-60	15528.00 AF41F-60	15528.00 AF41FLG-60	27104.00 SSF41S-60-SS304	29685.00 SSF41F-60-SS304	33617.00 SSF41FLG-60-SS304	31289.00 SSF41S-60-SS316	34316.00 SSF41F-60-SS316	41470.00 SSF41FLG-60-SS316
66"	15278.00 AF41S-66	16411.00 AF41F-66	16411.00 AF41FLG-66	29397.00 SSF41S-66-SS304	32182.00 SSF41F-66-SS304	37178.00 SSF41FLG-66-SS304	34172.00 SSF41S-66-SS316	37449.00 SSF41F-66-SS316	46179.00 SSF41FLG-66-SS316
72"	17130.00 AF41S-72	18311.00 AF41F-72	18311.00 AF41FLG-72	40350.00 SSF41S-72-SS304	43334.00 SSF41F-72-SS304	51076.00 SSF41FLG-72-SS304	47389.00 SSF41S-72-SS316	50911.00 SSF41F-72-SS316	63992.00 SSF41FLG-72-SS316
84"	19931.00 AF41S-84	21355.00 AF41F-84	21355.00 AF41FLG-84	47874.00 SSF41S-84-SS304	56100.00 SSF41F-84-SS304	65479.00 SSF41FLG-84-SS304	62083.00 SSF41S-84-SS316	66995.00 SSF41F-84-SS316	83165.00 SSF41FLG-84-SS316

AF-41 SSF-41 FLAP

Notes: Part number for flanged back assumes 125 lb. ANSI drilling
For spigot (end of pipe, non-flanged mounting) specify pipe type: Corrugated Metal, Concrete, PVC type, or HDPE.

PF-25 FLANGEBACK AND PF-25W COMPRESSION FLAP VALVE



PF-25F

GATE SIZE	PF-25F FLANGEBACK (125# DRILLING)	
	IRON COVER / NEOPRENE SEAT	WT. (LBS.)
4"	364.00 PF25F-04	20
6"	433.00 PF25F-06	36
8"	500.00 PF25F-08	48
10"	744.00 PF25F-10	68
12"	744.00 PF25F-12	176
14"	1467.00 PF25F-14	130
16"	2288.00 PF25F-16	145
18"	2373.00 PF25F-18	181
20"	4167.00 PF25F-20	245
24"	5978.00 PF25F-24	360



PF-25W

GATE SIZE	PF-25W COMPRESSION BODY, IRON COVER W/ NEOPRENE SEAT			
	WT. (LBS.)	W/ I.D. GASKET ¹	W/ O.D. GASKET ²	W/ SDR GASKET
4"	13	327.00 PF25W-04-ID	327.00 PF25W-04-OD	327.00 PF25W-04-SDR
6"	19	375.00 PF25W-06-ID	375.00 PF25W-06-OD	375.00 PF25W-06-SDR
8"	21	404.00 PF25W-08-ID	404.00 PF25W-08-OD	404.00 PF25W-08-SDR
10"	27	498.00 PF25W-10-ID	498.00 PF25W-10-OD	498.00 PF25W-10-SDR
12"	44	636.00 PF25W-12-ID	636.00 PF25W-12-OD	636.00 PF25W-12-SDR
14"	62	796.00 PF25W-14-ID	N/A	796.00 PF25W-14-SDR

Notes: ¹ I.D. Gasket is for IPS Pipe or Schedule 40 PVC ² O.D. Gasket is for PIP Pipe 80# or 100#.

Model PF-25W not compatible with Ductile Pipe, must flange pipe and use PF-25F

PART	GATE SIZE									
	4"	6"	8"	10"	12"	14"	16"	18"	20"	24"
Cover - Neoprene Seat	19700 41204064	262.00 41206064	345.00 41208064	423.00 41210064	510.00 41212064	603.00 41214064	1164.00 41216064	2047 41218064	1980.00 41220064	2631.00 41224064
Packing Cover Only	32.00 43504066	45.00 43506066	45.00 43508066	49.00 43510066	51.00 43512066	58.00 43514066	82.00 43516066			
Follow Ring	27.00 58504066	49.00 58506066	50.00 58508066	58.00 58510066	95.00 58512066	145.00 58514066	N/A	N/A	N/A	N/A
Ring Bolts (ea.)	8.00 80802250	8.00 80803250	8.00 80803250	8.00 80803250	8.00 80803250	8.00 80803250	N/A	N/A	N/A	N/A
Hinge Pin Assembly	30.00 82605510	33.00 82605698	36.00 82605860	38.00 82651098	41.00 82651148	50.00 82651335	54.00 82651510	60.00 82661660	64.00 82661860	80.00 82681910
Pipe Seal Gaskets - I.D. Size (ea.)	33.00 43504010	38.00 43506010	39.00 43508010	41.00 43510010	54.00 43512010	55.00 43514010	N/A	N/A	N/A	N/A
Pipe Seal Gaskets - O.D. Size (ea.)	32.00 43504020	36.00 43506020	38.00 43508020	39.00 43510020	50.00 43512020	55.00 43514020	N/A	N/A	N/A	N/A

RED TOP OVERFLOW VALVES

VALVE SIZE	PIPE STYLE	WT. (LBS.)	VEE THREAD STAINLESS STEEL SCREW	ACME THREAD STAINLESS STEEL SCREW
3 1/2"	CONCRETE	3	40.00 RT-035-CONC-V-SST	N/A
	TYPE 4 (EPOXY)		N/A	N/A
	IPS (SOLVENT)		N/A	N/A
	PIP (SOLVENT)		N/A	N/A
4"	TYPE 4 (EPOXY)	3.5	52.00 RT-04-T4-V-SST	N/A
	IPS (SOLVENT)	3	102.00 RT-04-IPS-V-SST	N/A
6"	CONCRETE	6.5	82.00 RT-06-CONC-V-SST	82.00 RT-06-CONC-A-SST
	TYPE 4 (EPOXY)	7	98.00 RT-06-T4-V-SST	98.00 RT-06-T4-A-SST
	IPS (SOLVENT)	8	138.00 RT-06-IPS-V-SST	138.00 RT-06-IPS-A-SST
	PIP (SOLVENT)	8	138.00 RT-06-PIP-V-SST	138.00 RT-06-PIP-A-SST
8"	CONCRETE	10	110.00 RT-08-CONC-V-SST	110.00 RT-08-CONC-A-SST
	TYPE 4 (EPOXY)	10	118.00 RT-08-T4-V-SST	118.00 RT-08-T4-A-SST
	IPS (SOLVENT)	13	173.00 RT-08-IPS-V-SST	173.00 RT-08-IPS-A-SST
	PIP (SOLVENT)	13	173.00 RT-08-PIP-V-SST	173.00 RT-08-PIP-A-SST
10"	CONCRETE	15	143.00 RT-10-CONC-V-SST	143.00 RT-10-CONC-A-SST
	TYPE 4 (EPOXY)	15	162.00 RT-10-T4-V-SST	162.00 RT-10-T4-A-SST
	IPS (SOLVENT)	20	243.00 RT-10-IPS-V-SST	243.00 RT-10-IPS-A-SST
	PIP (SOLVENT)	20	243.00 RT-10-PIP-V-SST	243.00 RT-10-PIP-A-SST
12"	CONCRETE	21	198.00 RT-12-CONC-V-SST	198.00 RT-12-CONC-A-SST
	TYPE 4 (EPOXY)	21	229.00 RT-12-T4-V-SST	229.00 RT-12-T4-A-SST
	IPS (SOLVENT)	27	281.00 RT-12-IPS-V-SST	281.00 RT-12-IPS-A-SST
	PIP (SOLVENT)	27	281.00 RT-12-PIP-V-SST	281.00 RT-12-PIP-A-SST
15" x 14"	TYPE 4 (EPOXY)		297.00 RT-1514-T4-V-SST	297.00 RT-1514-T4-A-SST
	PIP (SOLVENT)		N/A	394.00 RT-1514-PIP-A-SST
18" (Brass Stems)	TYPE 4 (EPOXY)		N/A	590.00 RT-18-T4-A-BRS
20" x 21"	TYPE 4		N/A	706.00 RT-2120-T4-A-BRS

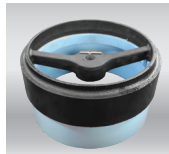
Notes: Type 4 is designed for Low Head 100 ft. PIP pipe. Bronze Screw available--Call for Quote



Concrete



Type 4
(Plastic Pipe, Epoxy Fit)



Solvent Weld (IPS/PIP)



Water dispersal Red Top

RED TOP OVERFLOW VALVES REPLACEMENT PARTS

PART	VALVE SIZE						
	3 1/2"	4"	5"	5" x 6"	6"	6 1/2"	8"
Frame - Concrete Pipe Vee Thread	109.00 40003003	110.00 40004003	124.00 40005003	N/A	137.00 40006003	142.00 40007003	147.00 40008003
Frame - Concrete Pipe Acme Thread	N/A	N/A	N/A	N/A	137.00 40006013	142.00 40007013	147.00 40008013
Frame - Type 4 Pipe (Epoxy) Vee Thread	N/A	110.00 40004004	124.00 40005004	124.00 40005004	137.00 40006004	N/A	147.00 40008004
Frame - Type 4 Pipe (Epoxy) Acme Thread	N/A	N/A	N/A	N/A	137.00 40006014	N/A	147.00 40008014
Frame - IPS (Solvent) Vee Thread	N/A	130.00 40304003	N/A	N/A	152.00 40306005	N/A	178.00 40308004
Frame - IPS (Solvent) Acme Thread	N/A	N/A	N/A	N/A	152.00 40306004	N/A	178.00 40308003
Frame - PIP (Solvent) Vee Thread	N/A	N/A	N/A	N/A	152.00 40306007	N/A	178.00 40308007
Frame - PIP (Solvent) Acme Thread	N/A	N/A	N/A	N/A	152.00 40306006	N/A	178.00 40308005
Cover Complete - Vee Thread, Stainless Steel (Includes Cover, Gasket, & Screw Complete)	60.00 41503003	60.00 41504004	64.00 41505004	64.00 41505004	74.00 41506002	93.00 41507002	93.00 41508002
Cover Complete - Acme Thread, Stainless Steel (Includes Cover, Gasket, & Screw Complete)	N/A	N/A	N/A	N/A	74.00 41506011	93.00 41507011	93.00 41508015
Cover Packed	28.00 41203001	28.00 41204001	32.00 41205001	30.00 41205001	34.00 41206001	63.00 41207001	63.00 41208001
Packing Gasket	4.00 43503001	4.00 43504001	12.00 43505001	11.00 43505001	11.00 43506001	11.00 43507001	11.00 43508001
Screw Complete - Vee Thread, Stainless Steel (Includes Screw, Nut, & Washer)	29.00 43005004	29.00 43005004	34.00 43005005	32.00 43005005	34.00 43006002	34.00 43006002	34.00 43006002
Screw Complete - Acme Thread, Stainless Steel (Includes Screw, Nut, & Washer)	N/A	N/A	N/A	N/A	34.00 43006011	34.00 43006011	34.00 43006011
Screw Only - Stainless Steel Vee Thread	18.00 42505006	18.00 42505006	23.00 42505004	21.00 42505004	30.00 42506002	30.00 42506002	30.00 42506002
Screw Only - Stainless Steel Acme Thread	N/A	N/A	N/A	N/A	30.00 42506011	30.00 42506011	30.00 42506011
Screw Only - Bronze Vee Thread	19.00 42505001	19.00 42505001	24.00 42505002	24.00 42505002	32.00 42506001	32.00 42506001	32.00 42506001
Screw Only - Bronze Acme Thread	N/A	N/A	N/A	N/A	32.00 42506010	32.00 42506010	32.00 42506010
Cover Nut - Vee Thread	7.00 80205001	7.00 80205001	7.00 80205001	7.00 80205001	7.00 80206001	7.00 80206001	7.00 80206001
Cover Nut - Acme Thread	N/A	N/A	N/A	N/A	7.00 80206010	7.00 80206010	7.00 80206010
UHMW Washer	4.00 81805001	4.00 81805001	4.00 81805001	4.00 81805001	4.00 81806001	4.00 81806001	4.00 81806001
Frame Nut - IPS / PIP (Solvent) Vee Thread	N/A	4.00 57500090	N/A	N/A	7.00 57500096	N/A	8.00 57500096
Frame Nut - IPS / PIP (Solvent) Acme Thread	N/A	4.00	N/A	N/A	8.00 57500091	N/A	13.00 57500091
Security Pin - IPS / PIP (Solvent)	N/A	1.00 2673	N/A	N/A	1.00 2673	N/A	1.00 2673
Redi-Set Rings - Concrete Pipe	13.00 95004008	13.00 95004008	19.00 95005008	N/A	N/A	N/A	15.00 95008012

RED TOP VALVE PARTS

RED TOP OVERFLOW VALVES REPLACEMENT PARTS

PART	VALVE SIZE						
	10"	12"	14"	15" x 14"	16"	18"	20"
Frame - Concrete Pipe Vee Thread	161.00 40010003	167.00 40012003	197.00 40014003	N/A	410.00 40016003	520.00 40018003	552.00 40020003
Frame - Concrete Pipe Acme Thread	161.00 40010013	167.00 40012013	197.00 40014013	N/A	410.00 40016013	520.00 40018013	552.00 40020013
Frame - Type 4 Pipe (Epoxy) Vee Thread	170.00 40010004	199.00 40012004	N/A	260.00 40014152	N/A	Call For Quote N/A	Call For Quote N/A
Frame - Type 4 Pipe (Epoxy) Acme Thread	170.00 40010014	199.00 40012014	N/A	260.00 40014154	N/A	441.00 40018014	630.00 40020014
Frame - IPS (Solvent) Vee Thread	299.00 40310004	313.00 40312004	N/A	N/A	N/A	N/A	N/A
Frame - IPS (Solvent) Acme Thread	299.00 40310003	313.00 40312003	N/A	N/A	N/A	N/A	N/A
Frame - PIP (Solvent) Vee Thread	299.00 40310007	313.00 40312007	N/A	N/A	N/A	N/A	N/A
Frame - PIP (Solvent) Acme Thread	299.00 40310005	313.00 40312005	N/A	410.00 40315004	N/A	N/A	N/A
Cover Complete - Vee Thread, SS (Includes Cover, Gasket, and Screw Complete)	132.00 41510002	141.00 41512002	180.00 41514002	180.00 41514002	387.03 41516011 Brass	424.00 41518011 Brass	722.00 41520011 Brass
Cover Complete - Acme Thread, SS (Includes Cover, Gasket, and Screw Complete)	132.00 41510014	141.00 41512017	180.00 41514012	180.00 41514012	387.00 41516022	424.00 41518021 Brass	722.00 41520021 Brass
Cover Packed	67.00 41210001	81.00 41212001	127.00 41214001	127.00 41214001	252.00 41216011	288.00 41218011	511.00 41220011
Packing Gasket	12.00 43510001	13.00 43512001	15.00 43514001	15.00 43514001	18.00 43516001	26.00 43518001	33.00 43520001
Screw Complete - Vee Thread, SS (Includes Screw, Nut, & Washer)	64.00 43010002	64.00 43010002	88.00 43014001 Brass	88.00 43014001 Brass	203.00 43016005 Brass	224.00 43020004 Brass	224.00 43020004 Brass
Screw Complete - Acme Thread, SS (Includes Screw, Nut, & Washer)	64.00 43010011	64.00 43010011	83.57 43014011	83.57 43014011	193.00 43016016	213.00 43020014 Brass	213.00 43020014 Brass
Screw Only - Stainless Steel Vee Thread	62.00 42510006	62.00 42510006	N/A	N/A	N/A	N/A	N/A
Screw Only - Stainless Steel Acme Thread	62.00 42510012	62.00 42510012	62.00 42514011	62.00 42514011	95.00 42516016	N/A	N/A
Screw Only - Bronze Vee Thread	60.00 42510001	60.00 42510001	63.00 42514001	63.00 42514001	122.00 42516005	243.00 42520004	243.00 42520004
Screw Only - Bronze Acme Thread	60.00 42510010	60.00 42510010	63.00 42514010	63.00 42514010	122.00 42516015	243.00 42520014	243.00 42520014
Cover Nut - Vee Thread	8.00 80207001	8.00 80207001	8.00 80208009	8.00 80208009	Call for Quote	Call for Quote	Call for Quote
Cover Nut - Acme Thread	8.00 80207010	8.00 80207010	8.00 80208011	8.00 80208011	Call for Quote	Call for Quote	Call For Quote 80210010
UHMW Washer	4.00 81807001	4.00 81807001	7.00 81808010	7.00 81808010	12.00 81812010	12.00 81812010	12.00 81812010
Frame Nut - IPS / PIP (Solvent) Vee Thread	9.00 57500097	9.00 57500097	N/A	N/A	N/A	N/A	N/A
Frame Nut - IPS / PIP (Solvent) Acme Thread	9.00 57500092	9.00 57500092	N/A	16.00 57500093	N/A	N/A	N/A
Security Pin - IPS / PIP (Solvent)	1.00 2673	1.00 2673	N/A	1.00 2673	N/A	N/A	N/A
Redi-Set Rings - Concrete Pipe	21.00 95010014	N/A	N/A	N/A	N/A	N/A	N/A

PASTURE OVERFLOW VALVES



PASTURE VALVES

Waterman's "Pasture" design features a flush, key operated, self-cleaning brass stem, for use in areas where livestock are present. Operating key sold separately.

VALVE SIZE	PIPE STYLE	WT. (LBS.)	VEE THREAD BRONZE SCREW	ACME THREAD BRONZE SCREW
4"	CONCRETE	3	160.00 PSTR-04-CONC-V-BRS	N/A
	TYPE 4 (EPOXY)	3	160.00 PSTR-04-T4-V-BRS	N/A
	IPS (SOLVENT)	4	160.00 PSTR-04-IPS-V-BRS	N/A
6"	CONCRETE	7	N/A	160.00 PSTR-06-CONC-A-BRS
	TYPE 4 (EPOXY)	7	N/A	160.00 PSTR-06-T4-A-BRS
	IPS (SOLVENT)	8	201.00 PSTR-06-IPS-V-BRS5	201.00 PSTR-06-IPS-A-BRS
	PIP (SOLVENT)	8	201.00 PSTR-06-PIP-V-BRS	201.00 PSTR-06-PIP-A-BRS
8"	CONCRETE	11	N/A	160.00 PSTR-08-CONC-A-BRS
	TYPE 4 (EPOXY)	11	N/A	160.00 PSTR-08-T4-A-BRS
	IPS (SOLVENT)	13	201.00 PSTR-08-IPS-V-BRS	201.00 PSTR-08-IPS-A-BRS
	PIP (SOLVENT)	13	201.00 PSTR-08-PIP-V-BRS	201.00 PSTR-08-PIP-A-BRS
10"	CONCRETE	16	N/A	185.00 PSTR-10-CONC-A-BRS
	TYPE 4 (EPOXY)	16	N/A	185.00 PSTR-10-T4-A-BRS
	IPS (SOLVENT)	20	269.00 PSTR-10-IPS-V-BRS	269.00 PSTR-10-IPS-A-BRS
	PIP (SOLVENT)	20	269.00 PSTR-10-PIP-V-BRS	269.00 PSTR-10-PIP-A-BRS
12"	CONCRETE	22	N/A	231.00 PSTR-12-CONC-A-BRS
	TYPE 4 (EPOXY)	22	N/A	231.00 PSTR-12-T4-A-BRS
	IPS (SOLVENT)	27	291.00 PSTR-12-IPS-V-BRS	291.00 PSTR-12-IPS-A-BRS
	PIP (SOLVENT)	27	291.00 PSTR-12-PIP-V-BRS	291.00 PSTR-12-PIP-A-BRS

Notes: Type 4 is designed for Low Head 100 PSI. PIP pipe

PASTURE VALVES

PASTURE OVERFLOW VALVES PARTS

PART	4"	6"	8"	10"	12"
Frame - Concrete Pipe Vee Thread	110.00 40004003	N/A	N/A	N/A	N/A
Frame - Concrete Pipe Acme Thread	N/A	137.00 40006013	147.00 40008013	161.00 40010013	167.00 40012013
Frame - Type 4 Pipe (Epoxy) Vee Thread	110.00 40004004	N/A	N/A	N/A	N/A
Frame - Type 4 Pipe (Epoxy) Acme Thread	N/A	137.00 40006014	147.00 40008014	170.00 40010014	199.00 40012014
Cover Complete - Vee Thread, SS (Includes Cover, Gasket, & Screw Complete)	177.00 41504003	Call for Quote	Call for Quote	Call for Quote	Call for Quote
Cover Complete - Acme Thread, SS (Includes Cover, Gasket, & Screw Complete)	N/A	123.00 41506013	133.00 41508013	180.00 41510013	189.00 41512013
Cover Packed	89.00 41204003	92.00 41206003	102.00 41208003	126.00 41210003	133.00 41212003
Packing Gasket	4.00 43504001	11.00 43506001	11.00 43508001	12.00 43510001	13.00 43512001
Screw Complete - Vee Thread, Brass (Includes Screw, Nut, & Washer)	47.00 43005003	Call for Quote 43006003	Call for Quote		
Screw Complete - Acme Thread, Brass (Includes Screw, Nut, & Washer)	N/A	72.00 43006013	72.00 43006013	89.00 43010013	89.00 43010013
Screw Only - Bronze Vee Thread	32.00 42505003	51.00 42506003	51.00 42506003	79.00 42510003	79.00 42510003
Screw Only - Bronze Acme Thread	N/A	51.00 42506013	51.00 42506013	79.00 42510013	79.00 42510013
Cover Nut - Bronze Vee Thread	7.00 80205001	7.00 80206001	7.00 80206001	8.00 80207001	8.00 80207001
Cover Nut - Bronze Acme Thread	N/A	7.00 80206010	5.99 80206010	8.00 80207010	8.00 80207010
UHMW Washer	4.00 81805001	4.00 81806001	4.00 81806001	4.00 81807001	6.00 81807001
Valve Key - Standard	85.00 42510100	85.00 42510100	85.00 42510100	85.00 42510100	85.00 42510100
Valve Key - 4' Spinner	117.00 42512100	117.00 42512100	117.00 42512100	117.00 42512100	117.00 42512100

Notes: For IPS/PIP style parts, see Red Top Overflow Valve Parts list

SUNSHINE OVERFLOW VALVES

VALVE SIZE	PIPE STYLE	WT. (LBS.)	VEE THREAD STAINLESS STEEL SCREW	ACME THREAD STAINLESS STEEL SCREW
6"	CONCRETE	6.5	82.00 SUN-06-CONC-V-SST	82.00 SUN-06-CONC-A-SST
	TYPE 4 (EPOXY)	7	98.00 SUN-06-T4-V-SST	98.00 SUN-06-T4-A-SST
	IPS (SOLVENT)	8	138.00 SUN-06-IPS-V-SST	138.00 SUN-06-IPS-A-SST
	PIP (SOLVENT)	8	138.00 SUN-06-PIP-V-SST	138.00 SUN-06-PIP-A-SST
8"	CONCRETE	10	110.00 SUN-08-CONC-V-SST	110.00 SUN-08-CONC-A-SST
	TYPE 4 (EPOXY)	10	118.00 SUN-08-T4-V-SST	118.00 SUN-08-T4-A-SST
	IPS (SOLVENT)	13	173.00 SUN-08-IPS-V-SST	173.00 SUN-08-IPS-A-SST
	PIP (SOLVENT)	13	173.00 SUN-08-PIP-V-SST	173.00 SUN-08-PIP-A-SST
10"	CONCRETE	15	N/A N/A	143.00 SUN-10-CONC-A-SST
	TYPE 4 (EPOXY)	15	162.00 SUN-10-T4-V-SST	162.00 SUN-10-T4-A-SST
	IPS (SOLVENT)	20	243.00 SUN-10-IPS-V-SST	243.00 SUN-10-IPS-A-SST
	PIP (SOLVENT)	20	243.00 SUN-10-PIP-V-SST	243.00 SUN-10-PIP-A-SST
12"	CONCRETE	21	198.00 SUN-12-CONC-V-SST	198.00 SUN-12-CONC-A-SST
	TYPE 4 (EPOXY)	21	229.00 SUN-12-T4-V-SST	229.00 SUN-12-T4-A-SST
	IPS (SOLVENT)	27	281.00 SUN-12-IPS-V-SST	281.00 SUN-12-IPS-A-SST
	PIP (SOLVENT)	27	281.00 SUN-12-PIP-V-SST	281.00 SUN-12-PIP-A-SST

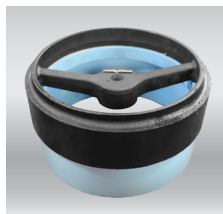
Notes: Type 4 is designed for Low Head 100 PSI PIP pipe.



Concrete



Type 4
(Plastic Pipe, Epoxy Fit)



Solvent Weld (IPS/PIP)



Water dispersal Sunshine

SUNSHINE OVERFLOW VALVE REPLACEMENT PARTS

PART	VALVE SIZE						
	3 1/2"	4"	5"	5" x 6"	6"	6 1/2"	8"
Frame - Concrete Pipe Vee Thread	109.00 40003003	110.00 40004003	124.00 40005003	N/A	137.00 40006003	150.00 40007003	153.00 40008003
Frame - Concrete Pipe Acme Thread	N/A	N/A	N/A	N/A	137.00 40006013	150.00 40007013	153.00 40008013
Frame - Type 4 Pipe (Epoxy) Vee Thread	N/A	110.00 40004004	124.00 40005004	124.00 40005004	137.00 40006004	N/A	153.00 40008004
Frame - Type 4 Pipe (Epoxy) Acme Thread	N/A	N/A	N/A	N/A	137.00 40006014	N/A	153.00 40008014
Frame - IPS (Solvent) Vee Thread	N/A	130.00 40304003	N/A	N/A	152.00 40306005	N/A	178.00 40308004
Frame - IPS (Solvent) Acme Thread	N/A	N/A	N/A	N/A	152.00 40306004	N/A	178.00 40308003
Frame - PIP (Solvent) Vee Thread	N/A	N/A	N/A	N/A	152.00 40306007	N/A	178.00 40308007
Frame - PIP (Solvent) Acme Thread	N/A	N/A	N/A	N/A	152.00 40306006	N/A	178.00 40308005
Cover Complete - Vee Thread, SS (Includes Cover, Gasket, & Screw Complete)	N/A	60.00 41504005	N/A	N/A	74.00 41506004	N/A	93.00 41508003
Cover Complete - Acme Thread, SS (Includes Cover, Gasket, & Screw Complete)	N/A	N/A	N/A	N/A	74.00 41506015	N/A	93.00 41508016
Cover Packed	N/A	28.00 41204002	34.00 41205002	N/A	34.00 41206002	63.00 41207002	63.00 41208002
Packing Gasket	4.00 43503001	4.00 43504001	11.00 43505001	11.00 43505001	11.00 43506001	11.00 43507001	11.00 43508001
Screw Complete - Vee Thread, SS (Includes Screw, Nut, & Washer)	29.00 43005004	29.00 43005004	32.00 43005005	32.00 43005005	34.00 43006002	34.00 43006002	34.00 43006002
Screw Complete - Acme Thread, SS (Includes Screw, Nut, & Washer)	N/A	N/A	N/A	N/A	34.00 43006011	34.00 43006011	34.00 43006011
Screw Only - Stainless Steel Vee Thread	18.00 42505006	18.00 42505006	21.00 42505004	21.00 42505004	30.00 42506002	30.00 42506002	30.00 42506002
Screw Only - Stainless Steel Acme Thread	N/A	N/A	N/A	N/A	30.00 42506011	30.00 42506011	30.00 42506011
Screw Only - Bronze Vee Thread	19.00 42505001	19.00 42505001	24.00 42505002	24.00 42505002	32.00 42506001	32.00 42506001	32.00 42506001
Screw Only - Bronze Acme Thread	N/A	N/A	N/A	N/A	32.00 42506010	32.00 42506010	32.00 42506010
Cover Nut - Vee Thread	7.00 80205001	7.00 80205001	7.00 80205001	7.00 80205001	7.00 80206001	7.00 80206001	7.00 80206001
Cover Nut - Acme Thread	N/A	N/A	N/A	N/A	7.00 80206010	7.00 80206010	7.00 80206010
UHMW Washer	4.00 81805001	4.00 81805001	4.00 81805001	4.00 81805001	4.00 81806001	4.00 81806001	4.00 81806001
Frame Nut - IPS / PIP (Solvent) Vee Thread	N/A	4.00 57500090	N/A	N/A	8.00 57500096	N/A	8.00 57500096
Frame Nut - IPS / PIP (Solvent) Acme Thread	N/A	11.00 N/A	N/A	N/A	8.00 57500091	N/A	8.00 57500091
Security Pin - IPS / PIP (Solvent)	N/A	1.00 2673	N/A	N/A	1.00 2673	N/A	1.00 2673
Redi-Set Rings - Concrete Pipe	12.00 95003008	13.00 95004008	19.00 95005008	N/A	N/A	N/A	15.00 95008012

SUNSHINE OVERFLOW VALVE REPLACEMENT PARTS

PART	VALVE SIZE						
	10"	12"	14"	15" x 14"	16"	18"	20"
Frame - Concrete Pipe Vee Thread	161.00 40010003	167.00 40012003	197.00 40014003	N/A	410.00 40016003	520.00 40018003	552.00 40020003
Frame - Concrete Pipe Acme Thread	161.00 40010013	167.00 40012013	197.00 40014013	N/A	410.00 40016013	520.00 40018013	552.00 40020013
Frame - Type 4 Pipe (Epoxy) Vee Thread	170.00 40010004	199.00 40012004	N/A	260.00 40014152	N/A	Call For Quote N/A	Call For Quote N/A
Frame - Type 4 Pipe (Epoxy) Acme Thread	170.00 40010014	199.00 40012014	N/A	260.00 40014154	N/A	441.00 40018014	630.00 40020014
Frame - IPS (Solvent) Vee Thread	299.00 40310004	313.00 40312004	N/A	N/A	N/A	N/A	N/A
Frame - IPS (Solvent) Acme Thread	299.00 40310003	313.00 40312003	N/A	N/A	N/A	N/A	N/A
Frame - PIP (Solvent) Vee Thread	299.00 40310007	313.00 40312007	N/A	N/A	N/A	N/A	N/A
Frame - PIP (Solvent) Acme Thread	299.00 40310005	313.00 40312005	N/A	390.00 40315004	N/A	N/A	N/A
Cover Complete - Vee Thread, SS (Includes Cover, Gasket, & Screw Complete)	132.00 41510004	141.00 41512004	180.00 41514002	180.00 41514002	N/A	N/A	N/A
Cover Complete - Acme Thread, SS (Includes Cover, Gasket, & Screw Complete)	132.00 41510016	141.00 41512005	180.00 41514016	180.00 41514016	N/A	N/A	N/A
Cover Packed	67.00 41210002	81.00 41212004	127.00 41214003	127.00 41214003	N/A	N/A	N/A
Packing Gasket	12.00 43510001	13.00 43512001	15.00 43514001	15.00 43514001	18.00 43516001	26.00 43518001	33.00 43520001
Screw Complete - Vee Thread, SS (Includes Screw, Nut, & Washer)	64.00 43010002	64.00 43010002	94.00 43014001 Brass	94.00 43014001 Brass	203.00 43016005 Brass	224.00 43020004 Brass	224.00 43020004 Brass
Screw Complete - Acme Thread, SS (Includes Screw, Nut, & Washer)	64.00 43010011	64.00 43010011	88.00 43014011	88.00 43014011	203.00 43016016	224.00 43020014 Brass	224.00 43020014 Brass
Screw Only - Stainless Steel Vee Thread	62.00 42510006	62.00 42510007	N/A	N/A	N/A	N/A	N/A
Screw Only - Stainless Steel Acme Thread	62.00 42510016	62.00 42510016	62.00 42514011	62.00 42514011	95.00 42516016	N/A	N/A
Screw Only - Bronze Vee Thread	60.00 42510001	60.00 42510001	63.00 42514001	63.00 42514001	122.00 42516005	243.00 42520004	243.00 42520004
Screw Only - Bronze Acme Thread	60.00 42510010	60.00 42510010	63.00 42514010	63.00 42514010	122.00 42516015	243.00 42520014	243.00 42520014
Cover Nut - Vee Thread	8.00 80207001	8.00 80207001	8.00 80208009	8.00 80208009	11.00 71107270102	11.00 71107270102	11.00 71107270102
Cover Nut - Acme Thread	8.00 80207010	8.00 80207010	8.00 80208011	8.00 80208011	11.00 80210010	11.00 80210010	11.00 80210010
UHMW Washer	4.00 81807001	4.00 81807001	7.00 81808010	7.00 81808010	12.00 81812010	12.00 81812010	12.00 81812010
Frame Nut - IPS / PIP (Solvent) Vee Thread	9.00 57500097	9.00 57500097	N/A	N/A	N/A	N/A	N/A
Frame Nut - IPS / PIP (Solvent) Acme Thread	9.00 57500092	9.00 57500092	N/A	16.00 57500093	N/A	N/A	N/A
Security Pin - IPS / PIP (Solvent)	1.00 2673	1.00 2673	N/A	1.00 2673	N/A	N/A	N/A
Redi-Set Rings - Concrete Pipe	21.00 95010014	N/A	N/A	N/A	N/A	N/A	N/A

SUNSHINE VALVES PARTS

RED TOP ALFALFA VALVE WITH SOLID ARCH FRAME

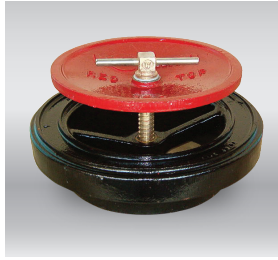
VALVE SIZE	PIPE STYLE	WT. (LBS.)	SOLID ARCH FRAME			
			VEE THREAD STAINLESS STEEL SCREW	ACME THREAD STAINLESS STEEL SCREW	VEE THREAD BRONZE SCREW	ACME THREAD BRONZE SCREW
8"	CONCRETE	22	N/A	253.00 RTALF-08-SA-T1-A-SST	253.00 RTALF-08-SA-T1-V-BRS	253.00 RTALF-08-SA-T1-A-BRS
	TYPE 4 (EPOXY)	24	N/A	207.00 RTALF-08-SA-T4-A-SST	207.00 RTALF-08-SA-T4-V-BRS	207.00 RTALF-08-SA-T4-A-BRS
10"	CONCRETE	22	N/A	322.00 RTALF-10-SA-T1-A-SST	N/A	322.00 RTALF-10-SA-T1-A-BRS
	TYPE 4 (EPOXY)	28	N/A	247.00 RTALF-10-SA-T4-A-SST	N/A	247.00 RTALF-10-SA-T4-A-BRS
12"	CONCRETE		N/A	N/A	Call For Availability RTALF-12-SA-T1-V-6TPI	Call For Availability RTALF-12-SA-T1-A-BRS
	TYPE 4 (EPOXY)	39	N/A	Call For Availability RTALF-12-SA-T4-A-SST	N/A	Call For Availability RTALF-12-SA-T4-A-BRS

Notes: Type 4 is designed for Low Head 100 ft. PIP pipe.

RED TOP ALFALFA SOLID ARCH FRAME PARTS

PART	VALVE SIZE		
	8"	10"	12"
Frame - Concrete Pipe Vee Thread	153.00 40008007	161.00 40010007	Call for Availability 40012007
Frame - Concrete Pipe Acme Thread	153.00 40008017	161.00 40010017	Call for Availability 40012017
Frame - Type 4 Pipe (Epoxy) Vee Thread	153.00 40008008	170.00 40010008	Call for Availability 40012008
Frame - Type 4 Pipe (Epoxy) Acme Thread	153.00 40008018	170.00 40010018	Call for Availability 40012018
Cover Complete - Vee / Bronze (Includes Cover, Gasket, & Screw Complete)	128.00 41508011	163.00 41510011	188.00 41512011
Cover Complete - Acme / Stainless (Includes Cover, Gasket, & Screw Complete)	128.00 41508023	163.00 41510024	188.00 41512023
Cover Complete - Acme / Bronze (Includes Cover, Gasket, & Screw Complete)	128.00 41508021	163.00 41510021	188.00 41512021
Cover Packed	58.00 41208011	71.00 41210011	83.00 41212011
Packing Gasket	9.00 43508002	12.00 43510001	13.00 43512001
Screw Complete - Vee / Bronze (Includes Screw, Nut, & Washer)	74.00 43008004	90.00 43010005	95.00 43012004
Screw Complete - Acme / Stainless (Includes Screw, Nut, & Washer)	63.00 43008015	79.00 43010015	95.00 43012015
Screw Complete - Acme / Bronze (Includes Screw, Nut, & Washer)	74.00 43008014	90.00 43010014	95.00 43012014
Screw Only - Stainless Steel Vee Thread	N/A	N/A	N/A
Screw Only - Stainless Steel Acme Thread	50.00 42508015	68.00 42510015	76.00 42512015
Screw Only - Bronze Vee Thread	70.00 42508004	79.00 42510005	86.00 42512004
Screw Only - Bronze Acme Thread	70.00 42508014	79.00 42510014	86.00 42512014
Brass Cover Nut - Vee Thread	8.00 80208009	8.00 80208002	10.00 80209001
Brass Cover Nut - Acme Thread	7.00 80208010	9.00 80208012	11.00 80209010
UHMW Washer	7.00 81808010	12.00 81810010	12.00 81811010

RED TOP ALFALFA VALVE WITH REMOVABLE ARCH



Alfa

ALFALFA RISER VALVES WITH REMOVABLE ARCH

Alfa Valves are commonly used with the Waterman Universal Hydrant for connection of portable surface pipe. They are also applied where an extra heavy duty riser valve is desired. A fully machined outer rim is provided to fit and make a watertight seal with our hydrant. The larger diameter screw and brass nut is designed to provide resistance to higher flow. Arch and nut are field replaceable.

VALVE SIZE	PIPE STYLE	WT. (LBS.)	REMOVABLE ARCH FRAME			
			VEE THREAD STAINLESS STEEL SCREW	ACME THREAD STAINLESS STEEL SCREW	VEE THREAD BRONZE SCREW	ACME THREAD BRONZE SCREW
8"	CONCRETE	18	N/A	224.00 RTALF-08-RA-T1-A-SST	224.00 RTALF-08-RA-T1-V-6TPI	224.00 RTALF-08-RA-T1-A-BRS
	TYPE 4 (EPOXY)	29	N/A	247.00 RTALF-08-RA-T4-A-SST	N/A	247.00 RTALF-08-RA-T4-A-BRS
10"	CONCRETE	25	N/A	277.00 RTALF-10-RA-T1-A-SST	N/A	277.00 RTALF-10-RA-T1-A-BRS
	TYPE 4 (EPOXY)	48	N/A	308.00 RTALF-10-RA-T4-A-SST	N/A	308.00 RTALF-10-RA-T4-A-BRS
12"	CONCRETE	34	N/A	309.00 RTALF-12-RA-T1-A-SST	309.00 RTALF-12-RA-T1-V-6TPI	309.00 RTALF-12-RA-T1-A-BRS
	TYPE 4 (EPOXY)	58	N/A	347.00 RTALF-12-RA-T4-A-SST	347.00 RTALF-12-RA-T4-V-6TPI	347.00 RTALF-12-RA-T4-A-BRS
14"	CONCRETE	49	N/A	454.00 RTALF-14-RA-T1-A-SST	N/A	454.00 RTALF-14-RA-T1-A-BRS
	TYPE 4 (EPOXY)		N/A	N/A	N/A	N/A
15" x 14" (15" Pipe Size)	CONCRETE		N/A	N/A	N/A	N/A
	TYPE 4 (EPOXY)	78	N/A	492.00 RTALF-1514-RA-T4-A-SST	N/A	492.00 RTALF-1514-RA-T4-A-BRS
16"	CONCRETE	53	N/A	572.00 RTALF-16-RA-T1-A-SST	572.00 RTALF-16-RA-T1-V-6TPI	572.00 RTALF-16-RA-T1-A-BRS
	TYPE 4 (EPOXY)		N/A	N/A	N/A	N/A
18"	CONCRETE	74	N/A	N/A	1224.00 RTALF-18-RA-T1-V-6TPI	1224.00 RTALF-18-RA-T1-A-3TPI
	TYPE 4 (EPOXY)	101	N/A	N/A	N/A	1646.00 RTALF-18-RA-T4-A-3TPI
20"	CONCRETE	91	N/A	N/A	N/A	1938.00 RTALF-20-RA-T1-A-3TPI
	TYPE 4 (EPOXY)	111	N/A	N/A	N/A	1938.00 RTALF-20-RA-T4-A-3TPI
24"	CONCRETE	135	N/A	N/A	N/A	3795.00 RTALF-24-RA-T1-A-3TPI
	TYPE 4 (EPOXY)	149	N/A	N/A	N/A	3795.00 RTALF-24-RA-T4-A-3TPI
30"	CONCRETE	245	N/A	N/A	N/A	4025.00 RTALF-30-RA-T1-A-4TPI
	TYPE 4 (EPOXY)		N/A	N/A	N/A	N/A
36"	CONCRETE	530	N/A	N/A	N/A	6440.00 RTALF-36-RA-T1-A-4TPI
	TYPE 4 (EPOXY)		N/A	N/A	N/A	N/A

Notes: Type 4 is designed for Low Head 100 ft. PIP pipe. 16" Valve and above is Special Order only

ALFALFA VALVES

ALFALFA REMOVABLE ARCH - REPLACEMENT PARTS

PART	VALVE SIZE				
	8"	10"	12"	14"	15" x 14"
Frame - Concrete Pipe	149.00 40080271	184.00 40100271	232.00 40012051	244.00 40140271	N/A
Frame - Type 4 Pipe (Epoxy)	149.00 40008054	184.00 40010054	232.00 40012054	N/A	290.00 40155154
Arch - Vee Thread	57.00 44208001	59.00 44208120	71.00 44210120	87.00 44214001	87.00 44214001
Arch - Acme Thread	57.00 44208010	59.00 44208121	71.00 44210121	87.00 44214010	87.00 44214010
Cover Complete - Vee / Bronze (Includes Cover, Gasket, & Screw Complete)	128.00 41508011	163.00 41510011	188.00 41512011	283.00 41514011	238.00 41514011
Cover Complete - Acme / Stainless (Includes Cover, Gasket, & Screw Complete)	128.00 41508023	163.00 41510024	188.00 41512023	238.00 41514022	238.00 41514022
Cover Complete - Acme / Bronze (Includes Cover, Gasket, & Screw Complete)	128.00 41508021	163.00 41510021	188.00 41512021	238.00 41514021	238.00 41514021
Cover Packed	58.00 41208011	71.00 41210011	83.00 41212011	127.00 41214011	127.00 41214011
Packing Gasket	9.00 43508002	12.00 43510001	13.00 43512001	15.00 43514001	15.00 43514001
Screw Complete - Vee / Bronze (Includes Screw, Nut, & Washer)	74.00 43008004	90.00 43010005	95.00 43012004	203.00 43014012	203.00 43016005
Screw Complete - Acme / Stainless (Includes Screw, Nut, & Washer)	63.00 43008015	79.00 43010015	95.00 43012015	203.00 43016016	203.00 43016016
Screw Complete - Acme / Bronze (Includes Screw, Nut, & Washer)	74.00 43008014	90.00 43010014	95.00 43012014	203.00 43016015	203.00 43016015
Screw Only - Stainless Steel Vee Thread	N/A	N/A	N/A	N/A	N/A
Screw Only - Stainless Steel Acme Thread	50.00 42508015	68.00 42510015	76.00 42512015	95.00 42516016	95.00 42516016
Screw Only - Bronze Vee Thread	66.00 42508004	75.00 42510005	81.00 42512004	116.00 42516005	116.00 42516005
Screw Only - Bronze Acme Thread	70.00 42508014	79.00 42510014	86.00 42512014	122.00 42516015	122.00 42516015
Tee Handle Bar - Bronze Screw	15.00 50005007	15.00 50005007	15.00 50005007	32.00 50005008	32.00 50005008
Brass Cover Nut - Vee Thread	8.00 80208009	8.00 80208002	10.00 80209001	11.00 80210001	11.00 80210001
Brass Cover Nut - Acme Thread	7.00 80208010	9.00 80208012	11.00 80209010	11.00 80210010	11.00 80210010
UHMW Washer	7.00 81808010	12.00 81810010	12.00 81811010	12.00 81812010	12.00 81812010
Eccentric Latch	11.00 101589	11.00 101589	11.00 101589	11.00 101589	11.00 101589
Rivet	5.00 1254	5.00 1254	5.00 1258	5.00 1258	5.00 1258

PARTS FOR RED TOP® ALFALFA VALVES WITH REMOVABLE ARCH

Parts for Red Top® Alfalfa Valves with Removable Arch

PART	VALVE SIZE					
	16"	18"	20"	24"	30"	36"
Frame - Concrete Pipe	259.00 40016051	579.00 40018051	638.00 40020051	681.00 40024051	1104.00 40030051	1270.00 40036051
Frame - Type 4 Pipe (Epoxy)	N/A	579.00 40018025	979.00 40020025	N/A	N/A	N/A
Arch - Vee Thread	142.00 44216001	189.00 44218001	237.00 44220001	342.00 44224001	N/A	N/A
Arch - Acme Thread	162.00 44216010	178.00 44218010	255.00 44220010	342.00 44224010	836.00 44230010	1113.00 44236010
Cover Complete - Vee / Bronze (Includes Cover, Gasket, & Screw Complete)	387.00 41516011	424.00 41518011	722.00 41520011	N/A	N/A	N/A
Cover Complete - Acme / Stainless (Includes Cover, Gasket, & Screw Complete)	387.00 41516022	N/A	N/A	N/A	N/A	N/A
Cover Complete - Acme / Bronze (Includes Cover, Gasket, & Screw Complete)	387.00 41516021	424.00 41518021	722.00 41520021	1968.00 41524021	2221.00 41530021	2971.00 41536021
Cover Packed	252.00 41216011	254.00 41218011	511.00 41220011	893.00 41224011	1182.00 41230011	1947.00 41236011
Packing Gasket	18.00 43516001	26.00 43518001	33.00 43520001	44.00 43524002	104.00 43530002	128.00 43536002
Screw Complete - Vee / Bronze (Includes Screw, Nut, & Washer)	203.00 43016005	224.00 43020004	244.00 43020004	312.00 43020006	N/A	N/A
Screw Complete - Acme / Stainless (Includes Screw, Nut, & Washer)	203.00 43016016	N/A	N/A	N/A	N/A	N/A
Screw Complete - Acme / Bronze (Includes Screw, Nut, & Washer)	203.00 43016015	224.00 43020014	224.00 43020014	312.00 43020012	979.00 43030014	1075.00 43036014
Screw Only - Bronze Vee Thread	122.00 42516005	208.00 42520004	208.00 42520004	255.00 42520006	N/A	N/A
Screw Only - Bronze Acme Thread	122.00 42516015	208.00 42520014	208.00 42520014	255.00 42520012	Call for Quote	Call for Quote
Tee Handle Bar - Bronze Screw	15.00 50005006	15.00 50005007	15.00 50005007	32.00 50005008	32.00 50005008	Call For Quote
Brass Cover Nut - Vee Thread	11.00 80210001	11.00 80210001	11.00 80210001	11.00 80210001	11.00 80210001	11.00 80210001
Brass Cover Nut - Acme Thread	11.00 80210010	11.00 80210010	11.00 80210010	11.00 80210010	11.00 1015868	11.00 1015868
UHMW Washer	12.00 81812010	12.00 81812010	12.00 81812010	12.00 81812010	POA	POA
Eccentric Latch	11.00 101589	11.00 101589	11.00 101589	11.00 101589	11.00 101589	11.00 101589
Rivet	5.00 1258	5.00 1257	5.00 1257	5.00 1257	5.00 1257	5.00 1257

ALFALFA VALVES PARTS

SUNSHINE ALFALFA VALVE - SOLID ARCH FRAME

VALVE SIZE	PIPE STYLE	WT. (LBS.)	SOLID ARCH FRAME			
			VEE THREAD STAINLESS STEEL SCREW	ACME THREAD STAINLESS STEEL SCREW	VEE THREAD BRONZE SCREW	ACME THREAD BRONZE SCREW
6"	CONCRETE		N/A	N/A	N/A	N/A
	TYPE 4 (EPOXY)	16	N/A	191.00 SSALF-06-SA-T4-A-SST	N/A	191.00 SSALF-06-SA-T4-A-BRS
8"	CONCRETE		N/A	N/A	N/A	N/A
	TYPE 4 (EPOXY)	24	N/A	207.00 SSALF-08-SA-T4-A-SST	N/A	207.00 SSALF-08-SA-T4-A-BRS
10"	CONCRETE		N/A	N/A	N/A	N/A
	TYPE 4 (EPOXY)	28	N/A	247.00 SSALF-10-SA-T4-A-SST	N/A	247.00 SSALF-10-SA-T4-A-BRS
12"	CONCRETE		N/A	N/A	N/A	N/A
	TYPE 4 (EPOXY)	39	N/A	311.00 SSALF-12-SA-T4-A-SST	N/A	311.00 SSALF-12-SA-T4-A-BRS

Notes: Type 4 is designed for Low Head 100 ft. PIP pipe.

SUNSHINE ALFALFA SOLID ARCH FRAME PARTS

PART	VALVE SIZE			
	6"	8"	10"	12"
Frame - Type 4 Pipe (Epoxy) Acme Thread	99.00 40006034	118.00 40008034	204.00 40010034	248.00 40012034
Cover Complete - Acme / Stainless (Includes Cover, Gasket, & Screw Complete)	144.00 41506016	151.00 41508024	186.00 41510023	173.00 41512015
Cover Complete - Acme / Bronze (Includes Cover, Gasket, & Screw Complete)	144.00 41506014	151.00 41508022	186.00 41510020	211.00 41512012
Cover Packed	51.00 41206014	57.00 41208022	76.00 41210022	92.00 41212002
Packing Gasket	10.00 43506002	9.00 43508002	12.00 43510001	13.00 43512001
Screw Complete - Acme / Stainless (Includes Screw, Nut, & Washer)	63.00 43008015	63.00 43008015	79.00 43010015	95.00 43012015
Screw Complete - Acme / Bronze (Includes Screw, Nut, & Washer)	74.00 43008014	74.00 43008014	90.00 43010014	95.00 43012014
Screw Only - Stainless Steel Acme Thread	50.00 42508015	50.00 42508015	68.00 42510015	76.00 42512015
Screw Only - Bronze Acme Thread	70.00 42508014	70.00 42508014	79.00 42510014	86.00 42512014
Brass Cover Nut - Acme Thread	7.00 80208010	7.00 80208010	9.00 80208012	11.00 80209010
UHMW Washer	7.00 81808010	7.00 81808010	12.00 81810010	12.00 81810010

SUNSHINE ALFALFA VALVE

SUNSHINE ALFALFA VALVE - REMOVABLE ARCH

VALVE SIZE	PIPE STYLE	WT. (LBS.)	REMOVABLE ARCH FRAME			
			VEE THREAD STAINLESS STEEL SCREW	ACME THREAD STAINLESS STEEL SCREW	VEE THREAD BRONZE SCREW	ACME THREAD BRONZE SCREW
8"	CONCRETE		N/A	N/A	N/A	N/A
	TYPE 4 (EPOXY)	29	N/A	247.00 SSALF-08-RA-T4-A-SST	N/A	N/A
10"	CONCRETE	25	N/A	277.00 SSALF-10-RA-T1-A-SST	N/A	277.00 SSALF-10-RA-T1-A-BRS
	TYPE 4 (EPOXY)	48	N/A	308.00 SSALF-10-RA-T4-A-SST	N/A	308.00 SSALF-10-RA-T4-A-BRS
12"	CONCRETE		N/A	N/A	N/A	N/A
	TYPE 4 (EPOXY)	58	N/A	347.00 SSALF-12-RA-T4-A-SST	N/A	347.00 SSALF-12-RA-T4-A-BRS
14"	CONCRETE	49	N/A	N/A	N/A	454.00 SSALF-14-RA-T1-A-3TPI
	TYPE 4 (EPOXY)		N/A	N/A	N/A	N/A
15" x 14" (15" Pipe Size)	CONCRETE		N/A	N/A	N/A	N/A
	TYPE 4 (EPOXY)	78	N/A	N/A	N/A	492.00 SSALF-1514-RA-T4-A-BRS
16"	CONCRETE	53	N/A	N/A	N/A	572.00 SSALF-16-RA-T1-A-3TPI
	TYPE 4 (EPOXY)		N/A	N/A	N/A	N/A
18"	CONCRETE		N/A	N/A	N/A	N/A
	TYPE 4 (EPOXY)	101	N/A	N/A	N/A	1646.00 SSALF-18-RA-T4-A-3TPI
20"	CONCRETE		N/A	N/A	N/A	N/A
	TYPE 4 (EPOXY)	111	N/A	N/A	N/A	1938.00 SSALF-20-RA-T4-A-3TPI

Notes: Type 4 is designed for Low Head 100 PSI.
PIP pipe. 16" Valve and above is Special Order only

SUNSHINE ALFALFA VALVE - REMOVABLE ARCH - REPLACEMENT PARTS

SUNSHINE ALFALFA REMOVABLE ARCH PARTS

PART	VALVE SIZE							
	8"	10"	12"	14"	15" x 14"	16"	18"	20"
Frame - Concrete Pipe	149.00 40080271	184.00 40100271	232.00 40012051	244.00 40140271	N/A	259.00 40016051	579.00 40018051	N/A
Frame - Type 4 Pipe (Epoxy)	149.00 40008054	184.00 40010054	232.00 40012054	N/A	290.00 40155154	N/A	579.00 40018054	979.00 40020054
Arch - Acme Thread	68.00 44208002	0.00 44210002	89.00 44212002	108.00 44214002	108.00 44214002	162.00 44216010	178.00 44218010	255.00 44220010
Cover Complete - Acme / Stainless (Includes Cover, Gasket, and Screw Complete)	151.00 41508024	186.00 41510023	173.00 41512015	N/A	N/A	N/A	N/A	N/A
Cover Complete - Acme / Bronze (Includes Cover, Gasket, and Screw Complete)	151.00 41508022	186.00 41510022	211.00 41512012	307.00 41514015	307.00 41514015	353.00 41516012	424.00 41518012	722.00 41520012
Cover Packed	57.00 41208022	76.00 41210022	92.00 41212002	113.00 41214002	113.00 41214002	235.00 41216002	288.00 41218002	325.00 41220002
Packing Gasket	9.00 43508002	12.00 43510001	13.00 43512001	15.00 43514001	15.00 43514001	18.00 43516001	26.00 43518001	33.00 43520001
Screw Complete - Acme / Stainless (Includes Screw, Nut, & Washer)	63.00 43008015	79.00 43010015	95.00 43012015	N/A 4201696	203.00 43016016	203.00 43016016	N/A	N/A
Screw Complete - Acme / Bronze (Includes Screw, Nut, & Washer)	74.00 43008014	90.00 43010014	95.00 43012014	203.00 43014012	203.00 43014012	203.00 43020014	312.00 43020012	312.00 43020012
Screw Only - Stainless Steel Acme Thread	50.00 42508015	68.00 42510015	76.00 42512015	95.00 42516016	95.00 42516016	N/A	N/A	N/A
Screw Only - Bronze Acme Thread	70.00 42508014	79.00 42510014	86.00 42512014	122.00 42516015	122.00 42516015	243.00 42520014	255.00 42520012	255.00 42520012
Tee Handle Bar - Bronze Screw	15.00 50005006	15.00 50005007	15.00 50005007	32.00 50005008	32.00 50005008	32.00 50005008	32.00 50005008	32.00 50005008
Brass Cover Nut - Acme Thread	7.00 80208010	12.00 80208012	12.00 80209010	12.00 80209010	12.00 80209010	12.00 80210010	12.00 80210010	12.00 80210010
UHMW Washer	7.00 81808010	12.00 81810010	12.00 81811010	12.00 81811010	12.00 81811010	12.00 81812010	12.00 81812010	12.00 81812010
Eccentric Latch	11.00 101589	11.00 101589	11.00 101589	11.00 101589	11.00 101589	11.00 101589	11.00 101589	11.00 101589
Rivet	5.00 1254	5.00 1254	5.00 1258	5.00 1258	5.00 1258	5.00 1258	5.00 1257	5.00 1257

SUNSHINE ALFALFA VALVE

DRAWBANDS (please order in bundles of 10 pcs.)

OD Size	Standard Draw Bands		Oversized Draw Bands	
	Item	Price Each	Item	Price Each
4"	90000300	16.00	900003001	16.00
6"	90000310	17.00	900003101	17.00
8"	90000320	17.00	900003201	17.00
10"	90000330	18.00	900003301	18.00
12"	90000340	18.00	900003401	18.00
14"	90000345	31.00	900003451	31.00
15"	90000350	33.00	900003501	33.00
16"	90000360	36.00	N/A	
18"	90000370	62.00	N/A	

UNIVERSAL HYDRANT

HYDRANT SIZE (BODY x OUTLET)	PIPE STYLE	SINGLE OUTLET	WT. (LBS.)	SINGLE COMBINATION	WT. (LBS.)
6" x 6"	CENTER TENSION	N/A		N/A	
	HOOK TYPE	549.00 703210606	16	N/A	
8" x 6"	CENTER TENSION	551.00 703310806	22	678.00 703410806	24
	HOOK TYPE	551.00 703210806	20	N/A	
8" x 8"	CENTER TENSION	551.00 703310808	23	678.00 703410808	25
	HOOK TYPE	551.00 703210808	21	N/A	
10" x 6"	CENTER TENSION	772.00 703311006	22	784.00 703411006	25
	HOOK TYPE	772.00 703211006	20	N/A	
10" x 8"	CENTER TENSION	753.00 703311008	24	784.00 703411008	27
	HOOK TYPE	755.00 703211008	22	N/A	
10" x 10"	CENTER TENSION	755.00 703311010	32	784.00 703411010	39
	HOOK TYPE	755.00 703211010	30	N/A	

UNIVERSAL HYDRANT



Hydrant

UNIVERSAL HYDRANT

- Center tension or hook type connection to alfalfa riser valve
- Outlet compatible with pierce-style gasket pipe

UNIVERSAL HYDRANT

HYDRANT SIZE (BODY x OUTLET)	PIPE STYLE	SINGLE OUTLET	WT. (LBS.)	SINGLE COMBINATION	WT. (LBS.)
12" x 6"	CENTER TENSION	831.00 703311206	30	854.00 703411206	37
	HOOK TYPE	831.00 703211206	28	N/A	
12" x 8"	CENTER TENSION	813.00 703311208	32	854.00 703411208	39
	HOOK TYPE	813.00 703211208	30	N/A	
12" x 10"	CENTER TENSION	813.00 703311210	33	1005.00 703411210	40
	HOOK TYPE	813.00 703211210	31	N/A	
12" x 12"	CENTER TENSION	899.00 703311212	34	1005.00 703411212	41
	HOOK TYPE	899.00 703211212	32	N/A	
14" x 8"	CENTER TENSION	1472.00 703311408	49	1518.00 703411408	56
	HOOK TYPE	1472.00 703211408	47	N/A	
14" x 10"	CENTER TENSION	1442.00 703311410	51	1518.00 703411410	58
	HOOK TYPE	1442.00 703211410	49	N/A	
14" x 12"	CENTER TENSION	1800.00 703311412	52	N/A	
	HOOK TYPE	1800.00 703211412	50	N/A	

UNIVERSAL HYDRANT PARTS

PART	VALVE SIZE				
	6"	8"	10"	12"	14"
Bottom Gasket	39.00 43506032	44.00 43508032	48.00 43510032	55.00 43512032	64.00 43514032
O-Ring Seals (ea.)	4.00 43200212	4.00 43200212	4.00 43200212	4.00 43200212	4.00 43200212
Center Tension Screw	N/A	87.00 98208005	90.00 98210005	97.00 98212005	108.00 98214005
Center Tension Clutch - Steel	N/A	47.00 9820008	47.00 9820008	47.00 9820008	47.00 9820008
Clutch Bolt w/ Nut	8.00 98200009	8.00 98200009	8.00 98200009	8.00 98200009	8.00 98200009
Center Tension Lift Nut Assembly (Includes Handle, Nut, Pin, and Washer)	N/A	87.00 98200012	87.00 98200012	87.00 98200012	87.00 98200012
Center Tension Lift Handle	N/A	21.00 64401113	21.00 64401113	21.00 64401113	21.00 64401113
Center Tension Lift Nut	N/A	61.00 98200024	61.00 98200024	61.00 98200024	61.00 98200024
Center Tension Lift Pin	N/A	8.00 98202725	8.00 98202725	8.00 98202725	8.00 98202725
Center Tension Brass Washer	N/A	6.00 98200010	6.00 98200010	6.00 98200010	6.00 98200010
Hook Stem - Aluminum	52.00 98201007	67.00 98203007	67.00 98203007	67.00 98203007	75.00 98204007
Hook Clutch - Aluminum	29.00 98299001	29.00 98299001	29.00 98299001	29.00 98299001	29.00 98299001
Side Hook Assembly (Incl. Hook, Pin, Spring, Washer, & Stirrup)	39.00 98200016	39.00 98200016	39.00 98203016	39.00 98203016	39.00 98203016
Side Hook	25.00 98201017	25.00 98201017	31.00 98202017	31.00 98202017	31.00 98202017
Hook Handle (Incl. Hook, Pin, Spring, Washer, & Stirrup)	11.00 98200019	11.00 98200019	11.00 98200019	11.00 98200019	11.00 98200019
Hook Pin	3.00 2699	3.00 2699	3.00 2699	3.00 2699	3.00 2699
Hook Spring¹	5.00 98200021	5.00 98200021	5.00 98201021	6.00 98202021	6.00 98202021
Hook Washer	2.00 98202980	2.00 98202980	2.00 98202980	2.00 98202980	2.00 98202980
Hook Stirrup - Brass Nut	15.00 98200022	15.00 98200022	15.00 98200022	15.00 98200022	15.00 98200022
Hook Stirrup - Stainless Steel Nut	13.00 98200025	13.00 98200025	13.00 98200025	13.00 98200025	13.00 98200025
Weld-On Hook Lug	26.00 98200023	26.00 98200023	26.00 98200023	26.00 98200023	26.00 98200023
Handwheel	55.00 98200000	55.00 98200000	55.00 98200000	55.00 98200000	55.00 98200000
Pierce Gasket					

Notes: ¹ Please advise if your hydrant has a raised or flat top



AV-150

SERIES AV-150 ALUMINUM BODY AIR VENT uses a hard, precision ground, inert solid plastic float ball which prevents “sticking” in the closed position. The float ball seats against a precision o-ring providing a tight seal at very low pressures where other vents often leak. Rated to 150 psi on the 1.5" and 2" and 100 psi on the 3" and 4". The aerodynamic “air-flow” design of a high strength alloy aluminum body and full baffle assures maximum vent capacity without premature closing.

AV-150 AIR RELIEF VALVE

VALVE SIZE NPT	WT. (LBS.)	PRICE	QTY
1 ½"	1	32.00 AV150-015	1
2"	2	41.00 AV150-020	1
2" Classic Flat Top	2.2	41.00 AV150-020-CL	1
3"	3	83.00 AV150-030	1
4"	6	166.00 AV150-040	1

AV-150 AIR VALVE PARTS

PART	VALVE SIZE			
	1 ½"	2"	3"	4"
Baffle	10.00 46000048	12.00 46001048	13.00 46003048	14.00 46004048
Float Ball	15.00 47048150	18.00 47048212	19.00 47048321	20.00 47048400
Seat Seal	4.00 43201047	5.00 43201049	5.00 43203048	6.00 43204048

AIR RELIEF VALVES

AVP-1 PLASTIC AIR RELIEF VALVE

VALVE SIZE	WT. (LBS.)	PRICE
1"	2	19.00



AVP

CR-101 CONTINUOUS ACTING AIR RELIEF VALVE (RATED TO 150 PSI)

VALVE SIZE	WT. (LBS.)	PRICE
2"	15	276.00 CR101-02
3"	16	312.00 CR101-03
4"	22	390.00 CR101-04

SERIES CR-101 ALUMINUM BODY CONTINUOUS ACTING AIR VENT AND VACUUM RELIEF VALVE continually provides high-volume air and vacuum protection, insures full line capacity, and conserves pump horsepower. It seals at pressures as low as 2 psi



CR-101

CR-101 HP CONTINUOUS ACTING AIR VALVE (RATED TO 300 PSI)

VALVE SIZE	WT. (LBS.)	PRICE
2"	16	1144.00 CR101HP-02
3"	17	1834.00 CR101HP-03
4"	23	1949.00 CR101HP-04



High Pressure Model

CR-101 AIR VALVE PARTS

PART	VALVE SIZE		
	2"	3"	4"
Base - Cast Iron	89.00 40602057	110.00 40603057	142.00 40604057
Body - Aluminum	139.00 40502058	167.00 40503058	212.00 40504058
Poppet Assembly (Includes Poppet, Guide, and Indicator Knob)	150.00 45902058	180.00 45903058	293.00 45904058
Poppet	115.00 45802058	145.00 45803058	150.00 45804058
Guide	15.00 52502312	15.00 52502312	15.00 52502312
Indicator Knob	5.00 51001001	5.00 51001001	5.00 51001001
Float Cylinder	70.00 47002057	110.00 47003058	110.00 47003058
Baffle	8.00 71121240020	13.00 71121150020	15.00 71121350020
Stud (ea.)	6.00 7600302027	6.00 7600302028	19.00
Body Gasket (O-Ring)	7.00 43200001	11.00 43505001	10.00 43506002

AIR RELIEF VALVES

CRP-8 CONTINUOUS ACTING AIR RELIEF VALVE

VALVE SIZE NPT	WT. (LBS.)	PRICE
1"	1.5	Call for availability CRP8-01
2"	5	Call for availability CRP8-02
3"	12.5	Call for availability CRP8-03



CRP-8

CRP-8 AIR VALVE PARTS

PART	VALVE SIZE	
	2"	3"
Base	37.00 40602059	98.00 40603059
Body	63.00 40502059	74.00 1800455
Poppet	52.00 45902059	52.00 45903059
Indicator Knob	5.00 51001001	5.00 51001001
Float Ball	70.00 47002058	110.00 47003058
Baffle	10.00 46002059	12.00 46003059
Stainless Steel Bolt & Washer (ea.) 8 required	6.00 2214 (bolt), 2925 (washer), 2919 (FW)	6.00 2214 (bolt), 2925 (washer), 2919 (FW)
Base Gasket	6.00 43501200	7.00 43501300

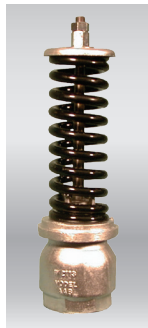
PRESSURE RELIEF VALVES

AA-6B RELIEF VALVE

VALVE SIZE	PSI RANGE	WT.(LBS.)	FIELD SET	FACTORY SET
2"	11 - 65 PSI	6	153.00 AA6B-02-FLD11-65	188.00 AA6B-02-FAC11-65
	66 - 120 PSI	10	153.00 AA6B-02-FLD66-120	188.00 AA6B-02-FAC66-120
2 1/2"	11 - 65 PSI	6	N/A	192.00 AA6B-025-FAC11-65
	66 - 120 PSI	10	N/A	192.00 AA6B-025-FAC66-120

AA-96B RELIEF VALVE (ALUMINUM BODY)

VALVE SIZE	PSI RANGE	WT. (LBS.)	FIELD SET	FACTORY SET
3"	11 - 40 PSI	8	201.00 AA96B-03-FLD11-40	236.00 AA96B-03-FAC11-40
	41 - 100 PSI	12	201.00 AA96B-03-FLD41-100	236.00 AA96B-03-FAC41-100
	101 - 150 PSI	15	201.00 AA96B-03-FLD101-151	236.00 AA96B-03-FAC101-150
4"	11 - 34 PSI	18	265.00 AA96B-04-FLD11-34	296.00 AA96B-04-FAC11-34
	35 - 60 PSI	23	265.00 AA96B-04-FLD35-60	296.00 AA96B-04-FAC35-60
	61 - 105 PSI	29	265.00 AA96B-04-FLD61-105	296.00 AA96B-04-FAC61-105
	106 - 150 PSI	17	265.00 AA96B-04-FLD106-150	296.00 AA96B-04-FAC106-150



AA6B



AA96B

AA-96C RELIEF VALVE (COVERED)

VALVE SIZE	PSI RANGE	WT. (LBS.)	FIELD SET	FACTORY SET
3"	11 - 40 PSI	9	N/A	269.00 AA96B-03-FAC11-40-COV
	41 - 100 PSI	13	N/A	269.00 AA96B-03-FAC41-100-COV
	101 - 150 PSI	16	N/A	308.00 AA96B-03-FAC101-150-COV
4"	11 - 34 PSI	19	N/A	336.00 AA96B-04-FAC11-34-COV
	35 - 60 PSI	25	N/A	347.00 AA96B-04-FAC35-60-COV
	61 - 105 PSI	31	N/A	384.00 AA96B-04-FAC61-105-COV
	106 - 150 PSI	18	N/A	384.00 AA96B-04-FAC106-150-COV

Notes: Model AA-96C is available as Factory Set only

AA-60D RELIEF VALVE (DIRECTIONAL OUTLET, WITH 2" FPT)

VALVE SIZE	PSI RANGE	WT. (LBS.)	FIELD SET	FACTORY SET
2"	11 - 65 PSI	10	N/A	417.00 AA60D-02-FACT11-65
	66 - 120 PSI	14	N/A	417.00 AA60D-02-FACT66-120

Notes: Model AA-60D is available as Factory Set only



AA60D



AA696C



AA96C

AA-96D RELIEF VALVE (WITH 2" MPT DIRECTIONAL OUTLET)

VALVE SIZE	PSI RANGE	WT. (LBS.)	FIELD SET	FACTORY SET
3"	11 - 40 PSI	11	N/A	453.00 AA96B-03-FAC11-40-DIR
	41 - 120 PSI	15	N/A	453.00 AA96B-03-FAC41-100-DIR
	101 - 120 PSI	18	N/A	453.00 AA96B-03-FAC101-150-DIR
4"	11 - 34 PSI	23	N/A	574.00 AA96B-04-FAC11-34-DIR
	35 - 60 PSI	29	N/A	574.00 AA96B-04-FAC35-60-DIR
	61 - 105 PSI	39	N/A	574.00 AA96B-04-FAC61-105-DIR
	106 - 120 PSI	22	N/A	574.00 AA96B-04-FAC106-150-DIR

Notes: Model AA-96D is available as Factory Set only. The directional outlet is 3/4" female pipe threaded for attachment of relief piping.

PRESSURE RELIEF VALVES

AA-9 RELIEF VALVE

VALVE SIZE	PSI RANGE	WT. (LBS.)	PRICE
6"	11 - 34 PSI	54	931.00 AA9-06-FAC11-34
	35 - 80 PSI	80	931.00 AA9-06-FAC35-80
	81 - 120 PSI	93	931.00 AA9-06-FAC81-120

AA SERIES PARTS

PART	AA-6 PARTS		AA-96 PARTS		AA-9 PARTS
	2"	2 1/2"	3"	4"	6"
Base	101.00 40601060	101.00 40602060	139.00 40603064	150.00 40604061	182.00 40606062
Cover Complete (includes cover, gasket, retainers and screws)	87.00 41003062	87.00 41003062	112.00 41003061	128.00	N/A
O-Ring Seals (ea.)	5.00 43200114	5.00 43200114	5.00 43200114	5.00 43200114	5.00 43200216
Spring Retainer	N/A	N/A	36.05 57101060	36.05 57101060	107.12 57106062
Spring Guide Washer	4.00 82001003	4.00 82001003	N/A	N/A	N/A
Seal Wire	5.00 64201001	5.00 64201001	5.00 64201001	5.00 64201001	5.00 64201001
Spring Cover w/ Drive Screws	N/A	N/A	60.00 56503062	70.00 56504062	107.00 56506062
Guide Rod Nuts	5.00 80302602	5.00 80302602	5.00 80306050	5.00 80306050	5.00 80306050

Notes: For AA-60D parts, see 2" AA-6 parts list

C-10 CANAL GATE ORDERING INFORMATION

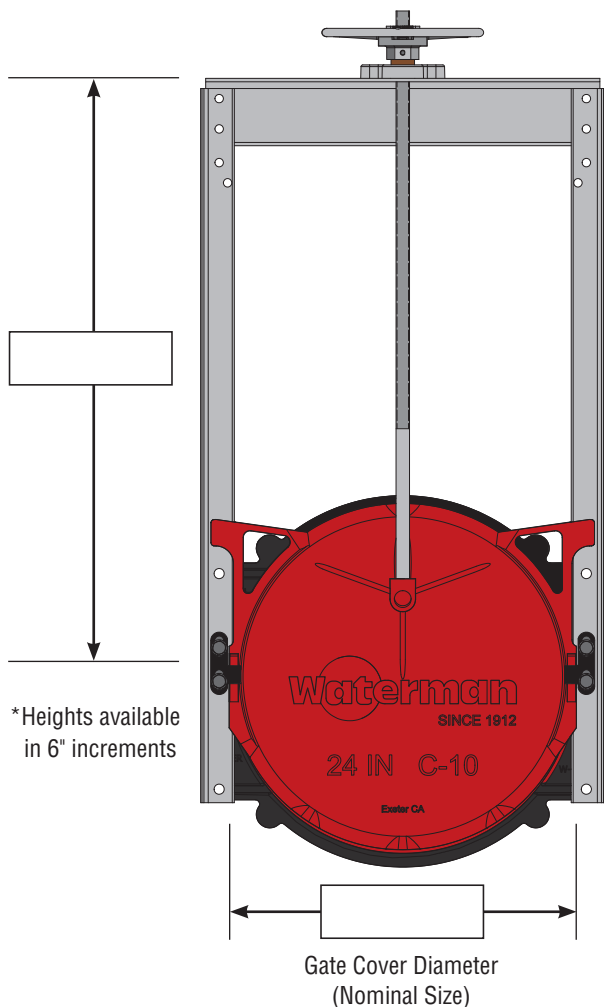
Contact Information

Company Name: _____ Currently Set up as a Waterman dealer? Yes No

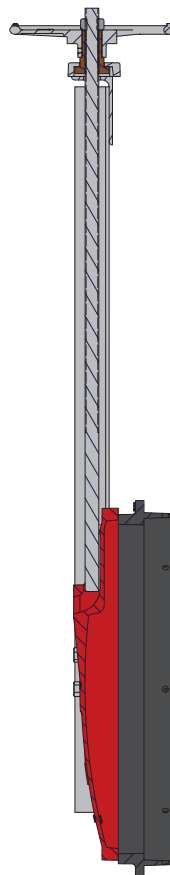
Contact Name: _____ Phone Number: _____

Email Address: _____ Job Name: _____

1. Select Gate Diameter and Choose Height



2. Select Mounting Type



- CMP Stub with Stub, indicate pipe length of 2', 4' or 6' in comments section
- Flat Back
- Pipe Adapter ID (HDPE or PVC)
- Spigot Back for CMP
- Taper Setting Collar for RCP

Spigot Machined to Fit Steel Pipe OD?

- Yes
- No

Select Stem Thread + Direction

- 3 Threads Per Inch, Right (3TR)
- 4 Threads Per Inch, Right (4TR)
- 4 Threads Per Inch, Left (4TL)

3. Select Materials

Frame Material:

- Galvanized Steel (Galv)
- Painted Steel (PTD)
- Stainless Steel 304 (SS304)
- Stainless Steel 316 (SS316)

Stem Material:

- Cold Rolled Steel
- Stainless Steel 304
- Stainless Steel 316

Additional Comments

C-20 CANAL GATE ORDERING INFORMATION

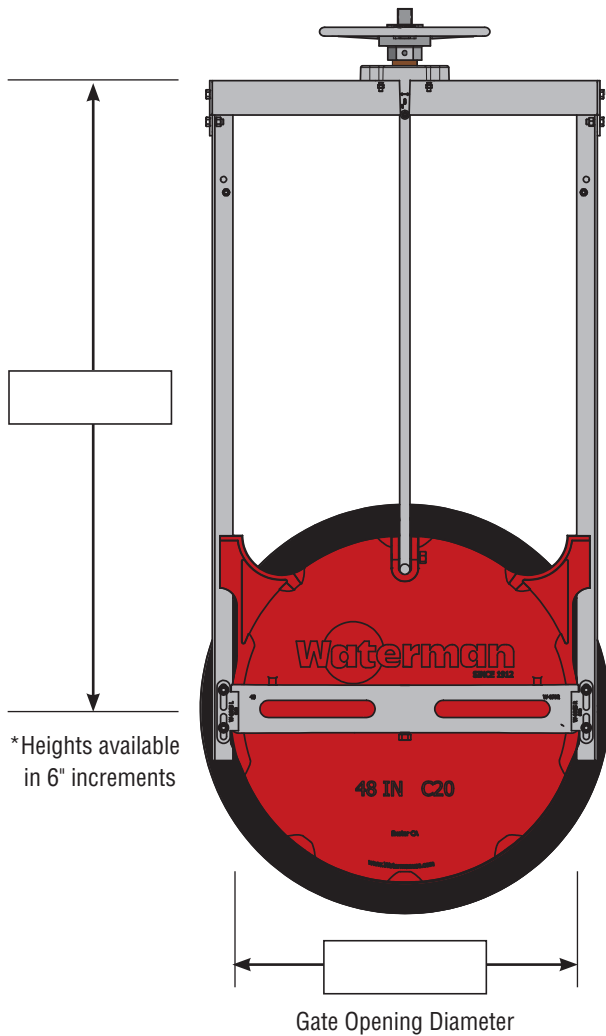
Contact Information

Company Name: _____ Currently Set up as a Waterman dealer? Yes No

Contact Name: _____ Phone Number: _____

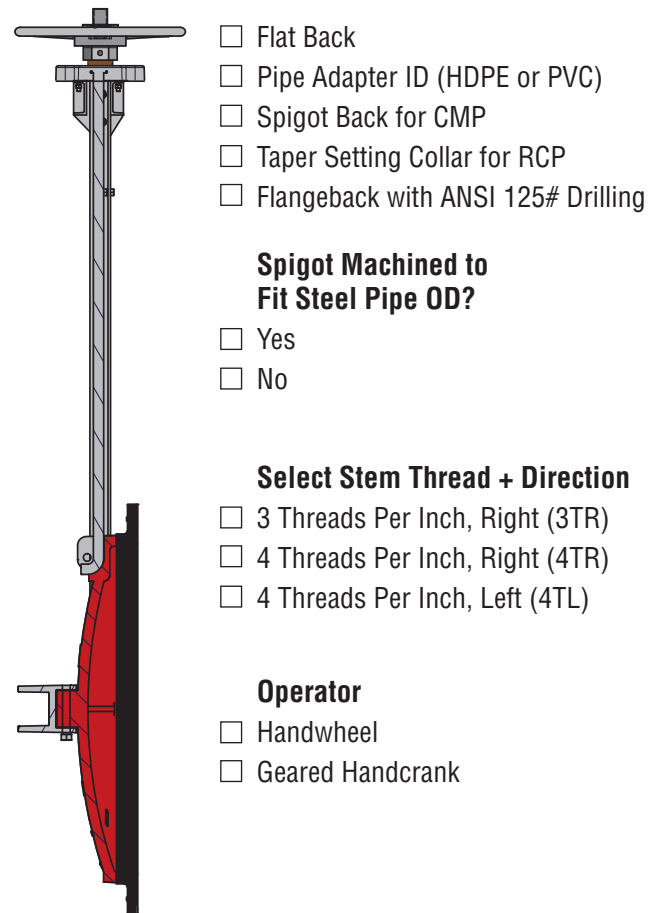
Email Address: _____ Job Name: _____

1. Select Gate Diameter and Choose Height



*Heights available in 6" increments

2. Select Mounting Type, Stem + Operator



- Flat Back
- Pipe Adapter ID (HDPE or PVC)
- Spigot Back for CMP
- Taper Setting Collar for RCP
- Flangeback with ANSI 125# Drilling

Spigot Machined to Fit Steel Pipe OD?

- Yes
- No

Select Stem Thread + Direction

- 3 Threads Per Inch, Right (3TR)
- 4 Threads Per Inch, Right (4TR)
- 4 Threads Per Inch, Left (4TL)

Operator

- Handwheel
- Geared Handcrank

3. Select Materials

Frame Material:

- Galvanized Steel (GALV)
- Painted Steel (PTD)
- Stainless Steel 304 (SS304)
- Stainless Steel 316 (SS316)

Stem Material:

- Cold Rolled Steel
- Stainless Steel 304
- Stainless Steel 316

Additional Comments

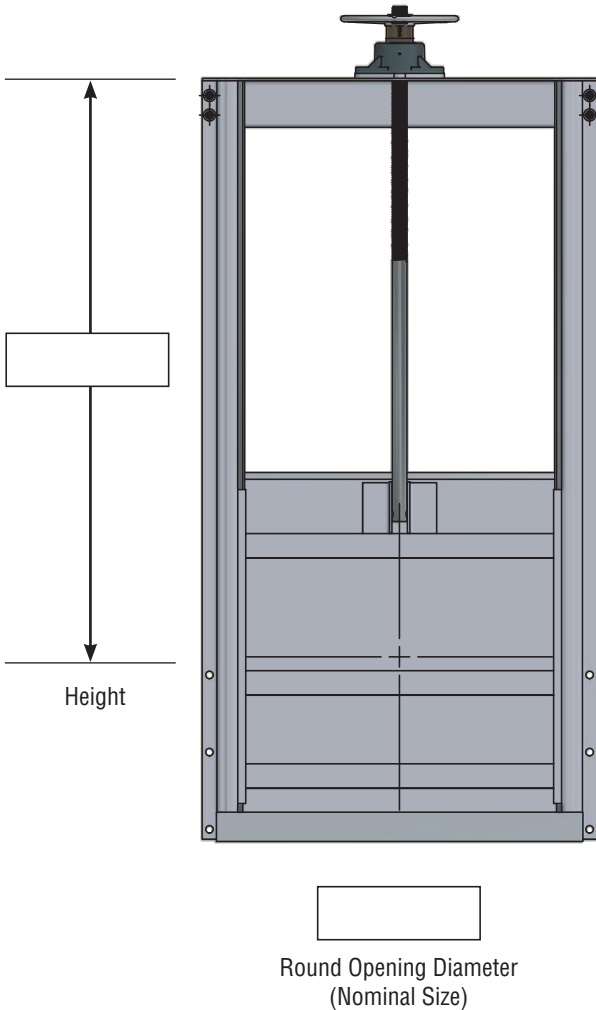
Contact Information

Company Name: _____ Currently Set up as a Waterman dealer? Yes No

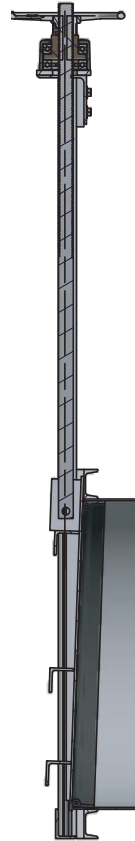
Contact Name: _____ Phone number: _____

Email Address: _____ Job Name: _____

1. Select Diameter and Choose Height



2. Select Mounting Type



- Flat Back (wall mount)
- Spigot Back for connection to pipe (specify pipe I.D.)
- Flange Mounting 125# ANSI

Options Desired:

- Non-rising Stem
- Stem Cover

Note: AC-31 is a fabricated gate designed to work with round openings or connection to pipe.

3. Select Lift

- Hand Wheel (for 24" + below only)
- Geared Handcrank Lift (required 30" + larger, optional otherwise)
- Motor Operator (provide comments)

Additional Comments

GET TO KNOW MCWANE PLANT & INDUSTRIALS' WATERMAN BRAND

McWane Plant & Industrials' Waterman brand is a leading supplier of water control products to the water treatment, rural water distribution, industrial processing and agricultural industries . The Waterman brand was founded by W.A. Waterman in 1912 as a fabricator of metal components for the growing California Central Valley agricultural markets. Waterman's purchase of the Red Top line in the early 1930's gave the company a leading position in both agricultural water distribution and on-farm water management products.

Herrick Waterman became company President in 1953, and rapidly expanded the company into production of large and complex sluice gates, slide gates and radial gates for water projects throughout the Western States. A new plant was opened in 1963 to support the growth which led to projects worldwide. The Waterman brand remains one of North America's leading suppliers of gates for municipal water treatment and rural water distribution systems.

In 2018, Waterman was acquired by McWane, Inc. McWane, Inc. is a family-owned business based in Birmingham, Alabama, with companies across the United States and the world. The McWane Family of Companies cast ductile iron products—including pipe, valves, hydrants, fittings, and plumbing products—manufacture fire extinguishers, fire suppression systems, steel pressure vessels, build network switches and monitoring equipment. They are the leader in delivering clean, safe drinking water around the world while focusing on the safe, environmentally-friendly manufacturing of our products.



MPI - MCWANE PLANT & INDUSTRIAL
25500 Road 204 Exeter, California 93221 USA • Tel: (559) 562.4000 • Fax: (559) 562.2277
Nationwide Order Desk: (800) 331.0808 Distribution Centers in Exeter, California and Tyler, Texas
www.mcwanepi.com